



MINNESOTA
LAND TRUST

2018 ANNUAL REPORT



CELEBRATING GENEROSITY

Dear Friends,

As you'll read in this report, 2018 was a historic year at the Minnesota Land Trust. Together we were able to protect more lands in more places than ever before—from the tall grass prairies of northwest Minnesota to the trout streams of the southeast—and everywhere in between. The key ingredient that makes conservation work possible is, and always has been, the dedication and generosity of caring individuals.

I recently read an article about A.O. Stevens, who has been called a Leopold or Thoreau for the prairies. Stevens, who moved to the Upper Midwest from Kansas in 1909, fell in love with this new land, especially the disappearing prairies of the Red River Valley he called home. Over his life, A.O. collected more than 12,000 bee and wasp specimens and also noted the dates that various flowers bloomed every summer. As a professor at North Dakota State University he made an effort to better understand and catalogue the magic of the tall grass prairie. There's no doubt we owe much of our grasslands preservation work in Minnesota to the early efforts of A.O. Stevens and those around him.

This made me start to think: who are our modern day heroes of conservation who carry forward this spirit of stewardship and generosity? Fortunately, at the Minnesota Land Trust, we are surrounded by them.

In the pages of this year's annual report, I hope you'll join me in celebrating the wonderful individuals who spend time, money or effort to protect and restore the natural wonders of Minnesota. Although we have only highlighted a few, we could fill many pages with stories like these. Minnesota is blessed with thoughtful and passionate people who work hard to keep our state beautiful. Whether it's our monitors visiting protected properties, donors making planned gifts, or landowners protecting and restoring their properties with the Land Trust—the generous spirit of fellow Minnesotans makes it possible to preserve the deep heritage of this place we call home. I can't thank you all enough.

We are so fortunate that our state is rich in conservation heroes. But it's not always those well-known conservationists like Sigurd Olson, Ernest Oberholtzer, or even A.O. Stevens. It may just be the person next door, who in their own way—big or small—is moving us all forward.

Thanks to you all,

Kris Larson, Executive Director

“WHO ARE OUR **MODERN DAY HEROES OF CONSERVATION** WHO CARRY FORWARD A SPIRIT OF STEWARDSHIP AND GENEROSITY?”



“THE GREATEST GIFT YOU EVER GIVE IS YOUR HONEST SELF.” —MR. ROGERS

ON THE COVER: “ONAMUNI SUNRISE”
BY PAUL RAYMAKER. THE OJIBWE NAME FOR THE
LAKE, MEANS “LAKE OF THE SUNSET GLOW”.

OUR NEIGHBORHOOD OF CONSERVATION HEROES

WHEN THE MINNESOTA LAND TRUST STARTED IN 1991, IT WAS A GRASSROOTS, BOOTS-ON-THE-GROUND ORGANIZATION DRIVEN BY DEDICATED VOLUNTEERS WHO WERE EXTREMELY PASSIONATE ABOUT THE GREAT OUTDOORS. WHILE THE LAND TRUST HAS GROWN SUBSTANTIALLY, THE SAME CULTURE EXISTS TODAY. BELOW ARE JUST A FEW OF THE MANY MOTIVATED PEOPLE HELPING KEEP MINNESOTA SPECIAL.

STEWARD | ENGAGE | INSPIRE | **SUSAN WILSON** | SHARE | CONNECT | EDUCATE | MOTIVATE | VOLUNTEER | CARE | DONATE | SUPPORT
VALUE | TEACH | **MARK NORQUIST** | HOST | EXPERIENCE | **PAUL RAYMAKER** | LEAVE LEGACY | MONITOR LAND | CONTRIBUTE TIME | GIVE | PARTICIPATE

SUSAN WILSON Few people have had an impact on the growth and direction of the Minnesota Land Trust like Susan Wilson. Susan joined the Land Trust Board of Directors in 1995 as it was expanding to have a statewide focus. After serving on the Board, including the role of Board Chair, she has continued to be an invaluable advocate for the Land Trust, spending countless hours connecting conservation-minded individuals to our work.

“I believe humans need to engage with nature for their spirits and souls,” says Susan. “This is what brings me to help the Minnesota Land Trust preserve these wonderful places.”

Susan has also served on the volunteer board of The Nature Conservancy, and as an avid gardener, restored a stretch of prairie.

“I love to walk the northern woods, fish the southeastern trout streams, and visit the western prairies of Minnesota. I care very much about the protection of important pieces of land to preserve habitat and biodiversity of species.”

MARK NORQUIST Founder of Modern Carnivore, a company that introduces adults to the outdoors through hunting and fishing, Mark also serves on the Land Trust Board of Directors and is a certified volunteer land monitor.

Mark’s enthusiasm for the outdoors has helped connect the Land Trust to new audiences of conservationists, excited about protecting the best our state has to offer.

“I’ve always had a strong conservation ethic—that’s part of who I am—and when I look at what the Land Trust has done and continues to do, I can’t think of an organization that really does more for Minnesota than the Land Trust.”

“AS A LIFELONG MINNESOTAN,
I HAVE A PRIDE AND DESIRE TO
CONNECT WITH AND CONSERVE
THE WILD PLACES IN OUR STATE.”

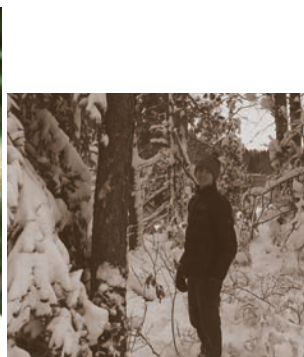
PAUL RAYMAKER Pick up any Land Trust publication, and you’re likely to see beautiful photos generously donated by renowned photographers Craig Blacklock and Jim Brandenburg, both landowners with easements through the Minnesota Land Trust.

You’ll also see stunning images donated by Paul Raymaker, geologist by trade, who volunteers his time to travel across the state to photograph Land Trust protected properties. “Photography is a way to draw people in and show how impressive this land really is,”

says Paul.

“I enjoy contributing to the Land Trust, because conservation can’t wait. It’s important that we keep working towards that goal to preserve what we have here.”

If a picture is worth a thousand words, Paul has said more about the outdoors in Minnesota than many of us will in a lifetime.



A LEGACY OF CONSERVATION FOR THE NORTH SHORE

The North Shore of Minnesota is iconic; ancient bedrock shoreline, steep, forested ridges, cascading rivers, and tall pines reaching up from the cold blue waters of Lake Superior make for unparalleled beauty. Against that natural backdrop sits a nearly 100-year-old rustic cabin overlooking the lake. The simple times spent at this cabin instilled a conservation ethic in a young boy named J. Timothy (Tim) Ritchie from Saint Paul, which in turn would help secure the future of conservation along the North Shore.

Originally hand-built in the 1920s by Tim's grandfather Dr. Harry Parks Ritchie, the cabin looks out on Lake Superior from the Encampment Forest, a unique camp-like setting near Two Harbors. A surgeon from Saint Paul, Dr. Ritchie was one of the founding members of the Encampment Forest Association. For generations the whole Ritchie family would summer along the North Shore at Encampment Forest; and it is here that Tim first fell in love with Minnesota's natural places. Whether it was from cold dips in the lake (which rarely got above 50 degrees) or long hikes with his two brothers through the untouched 300-year-old white pines, Tim developed a connection to the North Shore that lasted a lifetime.



CELEBRATING A LIFETIME OF GENEROSITY



TIM RITCHIE

Tim eventually moved away from Minnesota, settling in Chicago to work as an attorney, where he continued to support the natural places that resonated with him. He loved the Indiana Dunes along Lake Michigan, and referred to it as his second favorite place on earth after the North Shore of Minnesota. After retiring, he served on the board of Openlands in Chicago for almost 20 years as well as the Nature Conservancy of Indiana.

Though his travels took him across the country and abroad, the North Shore always held a special place in his heart. Every year in August, Tim and his partner Richard would return to the original family cabin on Lake Superior to take in the scenic beauty and natural glory of the North Shore.

Unfortunately, Tim Ritchie passed away in August 2017. As a parting gesture, he made bequests to several conservation organizations around the Great Lakes, ensuring his remaining assets would support the causes he loved in life.

The Minnesota Land Trust is deeply honored to be a recipient of a substantial gift from Tim Ritchie's estate. We are excited to announce that we will be using a significant portion of the contribution to advance conservation efforts on the North Shore of Lake Superior; to protect the places that inspired a young boy from Saint Paul to a lifetime of conservation, and inspire the next generation to hike among the white pines.



INSPIRING FUTURE GENERATIONS



LAND PROTECTION PROJECTS COMPLETED THIS YEAR

This year was a big success as we permanently protected nearly 4,000 acres—a 51% increase over the prior year! We are grateful to our members, partners, and the generous landowners who protect their land forever. Finally, these projects would not be possible without funding provided from the Outdoor Heritage Fund and the Minnesota Environment and Natural Resources Trust Fund.

The **AGASSIZ BEACH RIDGES** are the former shoreline of Lake Agassiz, a glacial lake that, at its peak, was larger than any lake that currently exists in the world. This area has some of the last remaining examples of tall grass prairies in Minnesota (where grasses can reach over 6 feet tall!). Minnesota was once home to an estimated 18 million acres of prairie; today less than 2% of that remains.

The **ALEXANDRIA MORAINÉ** program area is literally the place where Minnesota's ducks come home to roost, and is known as the "duck factory." Created by debris left behind by glaciers, moraines take the form of rolling hills interspersed with lakes or wetlands that are often called "prairie potholes." Some of these moraines reach up to 350 feet above the surrounding landscape.

Projects completed in these program

areas include our first-ever easements in Kittson County! Through a partnership with Audubon Minnesota, these projects preserve critical habitat in one of the state's "Important Bird Areas" (IBA), which includes crucial nesting areas for sharp-tailed grouse, horned grebes, and other unique bird species. Of particular note, we completed our second-largest project ever (more than 1,500 acres) in partnership with the Conservation Fund. This project provides an important economic model for farmers and ranchers to keep our essential grasslands from disappearing.

In all, these seven projects protect more than five miles of shoreline and hundreds of acres of tall grass prairie, productive wetlands, and other wildlife habitat which are essential to Minnesota's legacy of hunting, fishing, and birdwatching.

**THIS YEAR
AREA TOTALS**
Projects: **7**
Acres: **2,348**
Shoreline feet: **27,618**

AGASSIZ BEACH RIDGES AND ALEXANDRIA MORAINÉ PROGRAM AREAS



PROJECTS COMPLETED:

KITTSON COUNTY: SKULL LAKE (3 PROJECTS) AND CARIBOU PARKLANDS | **OTTER TAIL COUNTY:** LITTLE CROW LAKE AND SPITZER LAKE | **POPE COUNTY:** GILCHRIST LAKE

PROJECTS COMPLETED:

HENNEPIN COUNTY: LAKE SARAH | **GOODHUE COUNTY:** RED WING | **WINONA COUNTY:** WISCOY VALLEY | **CASS COUNTY:** TEN MILE LAKE

ITASCA COUNTY: ANN LAKE, EAGLE LAKE AND BIG TOO MUCH LAKE | **ISANTI COUNTY:** STANCHFIELD CREEK, TENNYSON LAKE, MEDVECKY WOOD AND TAMARACK LAKE

SHERBURNE COUNTY: HUNTER LAKE | **RAMSEY COUNTY:** GEM LAKE



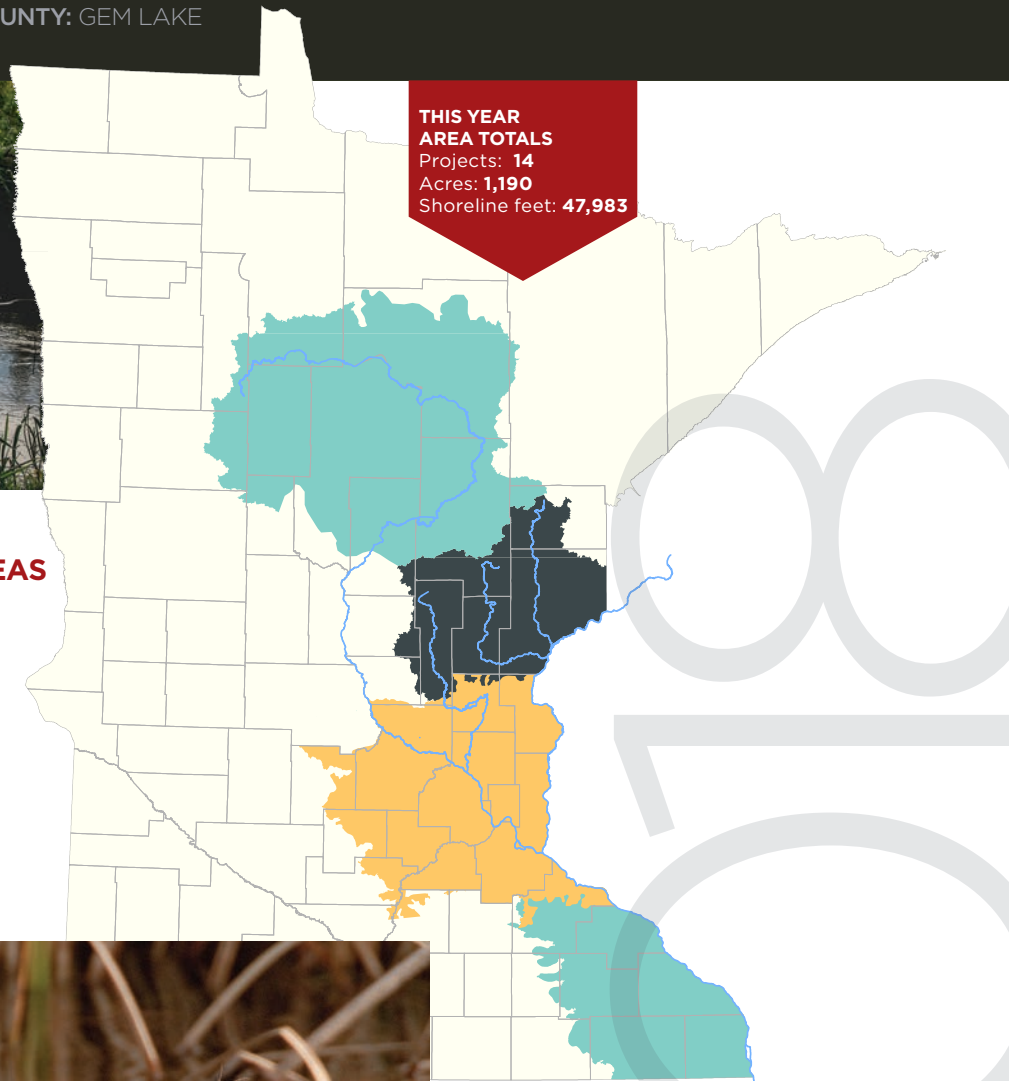
MISSISSIPPI HEADWATERS, RUM AND ST. CROIX RIVERS, TWIN CITIES METRO AND SOUTHEAST BLUFFLANDS PROGRAM AREAS

These four program areas all connect to the country's most treasured river: the Mississippi. **THE MISSISSIPPI HEADWATERS** program area contains the river's source at Lake Itasca and over 1,000 other lakes. The **RUM AND ST. CROIX RIVERS** program area includes the forested watersheds of these two wild and scenic rivers which flow into the Mississippi River as it passes through the **TWIN CITIES METRO** program area and then exits our state through the **SOUTHEAST BLUFFLANDS** program area. The most biodiverse area in Minnesota, the Southeast Blufflands feature a deeply dissected plateau forming towering bluffs, some reaching over 600 feet high, accentuated with spectacular goat prairies, trout streams, and hillside forests.

Protecting water quality and unique aquatic habitats were key themes among these projects. Some projects protect entire lakes from future development, some protect trout

streams for recreation, while others help keep our groundwater clean by protecting and restoring shoreline vegetation. And importantly, several of the projects protect tullibee fish and even a rare species of caddisfly (only known to be in four locations in the world), safeguarding the food chain for game fish and other wildlife. Once abundant, the small iconic tullibee fish have slowly been disappearing from our state due to declining water quality and rising temperatures in our cold-water lakes, which is why protecting natural shoreline is so important.

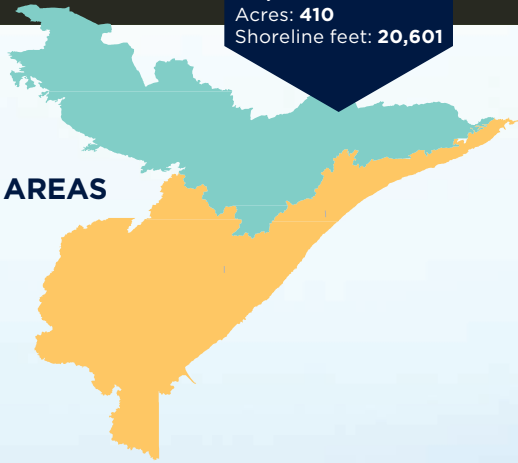
In the Twin Cities Metro program area, where there is intense development pressure, the Land Trust protected some of the region's best remaining natural habitats, adding to larger complexes. As the cities continue to grow and expand, it is critical to protect contiguous lands for wildlife, outdoor access, and scenic beauty so there can be "nature nearby" to Minnesota's largest population base.



MORE LAND PROTECTION

**THIS YEAR
AREA TOTALS**
Projects: 4
Acres: 410
Shoreline feet: 20,601

BORDER LAKES AND LAKE SUPERIOR PROGRAM AREAS



The **BORDER LAKES** and **LAKE SUPERIOR** program areas cover the Arrowhead region of our state and encompass some of the most iconic and wild Minnesota landscapes. These landscapes are rich in “charismatic megafauna” like moose, bear, and wolves, and are also known for their importance to migratory birds. This is one of the more visually-stunning regions with bedrock cliffs, deep blue lakes, vast forests, and cascading streams—and of course the dramatic North Shore.

From the untouched trees of the Encampment Forest to an undisturbed wilderness lake in the Cloquet Valley State Forest to the fabled Burntside Lake near Ely, the projects completed in these areas preserve the best of the best of our state. This includes lands along the Superior Hiking Trail and four miles of shoreline along some of Minnesota’s most pristine waters.

Featured Project:

Along the rocky shores of Burntside Lake on the edges of the Boundary Waters, lie YMCA Camp Widjiwagan and Camp du Nord. For generations, kids and families have had their first true wilderness experience in the natural surroundings at these camps, launching trips into the Boundary Waters, or exploring among the pines on the lake’s shore. Now, thanks to the generosity of one family, even more campers will be able to experience the outdoors in Northern Minnesota.

The Les and Phyllis Deppe family first came to Northern Minnesota in the 1950s, and were drawn immediately to Burntside Lake thanks to an introduction to the lake by the owners of YMCA Camp du Nord. “For our father it was love at first sight,” say their children, Steve Deppe and Marilyn Weber. That love led the Deppes to buy a property on the North Arm of the lake near the camp and build a small cabin for year-round recreation.

PROJECTS COMPLETED:

ST. LOUIS COUNTY: BURNTSIDE LAKE (2 PROJECTS) AND KING LAKE

Over the years, the connection to Burntside Lake and YMCA Camp du Nord deepened, as the Deppe's kids and eventually their grandchildren became regulars at the camp. With three generations enjoying experiences at YMCA Camp du Nord, the Deppe family wanted to ensure that future campers would benefit from similar experiences by protecting the land with a conservation easement through the Minnesota Land Trust. "My father and mother were quite visionary when it came to what they felt was important," says Steve. Steve and Marilyn's parents put their conservation ethic into practice and protected 29 acres on the North Arm of Burntside directly across from Camp du Nord more than twenty years ago with the Land Trust. This past year the family built upon their legacy of generosity by protecting an additional 80 acres with the Minnesota Land Trust and transferring the land to the YMCA Camp du Nord, making the family's original commitment to conservation even greater.

The Deppe's vision and generosity not only led to the protection of important shoreline wildlife habitat on Burntside Lake, it will also create new opportunities for campers at YMCA Camp du Nord.

"WE'RE SO GRATEFUL THAT THE STARS ALIGNED ON THIS," SAYS NIKI. "THIS TRULY IS A WIN-WIN FOR ALL OF US."

For Niki Geisler, executive director at the camp, the newly protected land is a big asset. "For kids and adults who haven't had a true wilderness experience, it's life changing because it pushes them out of their comfort zone." Many kids and families will be able have their first overnight camping experience on the Deppe property, creating a lifetime of memories.

The newly protected land prevents future development along the shoreline so campers will always be able to look out over the lake with an unspoiled view or maybe catch their first fish up against the wild, rocky shore. "We have a saying at camp — be where your feet are — it means that we need to be present in life," says Niki. "Nature is a prescription for mental and physical health, and we're so fortunate to have this additional land to help people unplug and disconnect for a while."

For the Deppe family, protecting the land was the continuation of their legacy of conservation. "This could not have turned out better for our state, YMCA Camp du Nord, all the generations yet to come, or for the wishes of our parents," say Steve and Marilyn. "We know that the YMCA Camp du Nord is committed to the same principles our family felt towards the preservation of this land."

RESTORATION

Active management to improve natural condition of land and habitat.

"PLANT AND ANIMAL POPULATIONS ARE IN DECLINE DUE TO HABITAT LOSS. IF WE PROTECTED ALL THE REMAINING WILDLIFE HABITAT, THE TREND STILL WOULD NOT BE REVERSED. RESTORATION WORK IS NEEDED."

—DARYL PETERSON, DIRECTOR OF RESTORATION PROGRAMS

LESS THAN 2%
OF MINNESOTA'S
NATIVE PRAIRIE
REMAINS



ONE OUT OF EVERY THREE
BITES OF FOOD
YOU EAT IS THERE
BECAUSE OF
POLLINATORS

OVER 100
PLANT SPECIES
CAN OCCUR IN A
PRAIRIE OF LESS
THAN 5 ACRES,
ATTRACTING
DIFFERENT
POLLINATOR SPECIES
LIKE BUTTERFLIES
AND BEES

VALUE OF NATIVE INSECT
"POLLINATOR SERVICES"

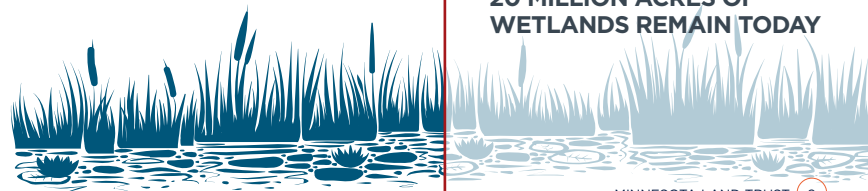
\$4 BILLION
ANNUALLY IN U.S.

OUR STATEWIDE IMPACT
SINCE 2014:

● **1,950 ACRES**
RESTORED, WITH
MORE ON THE WAY!

IN 2018, WORKING WITH THE
USFWS PARTNERS FOR FISH
AND WILDLIFE PROGRAM,
WE RESTORED:

● **474 ACRES**
OF PRAIRIE
● **213 ACRES**
OF WETLANDS



LESS THAN 50%
OF THE ORIGINAL
20 MILLION ACRES OF
WETLANDS REMAIN TODAY

ENGAGEMENT

Engaging people with meaningful outdoor experiences is a pathway to loving nature. The following outdoor engagement projects were made possible thanks to the partnership, funding and support from several entities, including the City of Duluth, Lloyd K. Johnson Foundation, Duluth Superior Area Community Foundation, Laura Jane Musser Fund and Mortenson Family Foundation.

GRAND AVENUE NORDIC CENTER

The Minnesota Land Trust is working with the City of Duluth and the broader community to develop new “world class” outdoor recreation venues. Recently, the Duluth Cross-Country Ski Club (DXC) and Spirit Mountain joined this effort and together they are working to expand access to cross-country skiing to the whole community at the Grand Avenue Nordic Center in Duluth.

A trail system through Spirit Mountain’s beautiful hardwood forest will be state-of-the-art with consistent trail grooming, improved lighting, and artificial snow making. Programming will be aimed at getting more people out skiing and experiencing the wonders of winter.

After breaking ground on construction last year, 1.5 miles of trail will be open for the first time this winter. See you on the trails!



IN ITS FIRST YEAR ALONE, YOUTH OUTDOORS DULUTH **REACHED MORE THAN 420 KIDS** BY OFFERING ACTIVITIES LIKE ARCHERY, ROCK CLIMBING, CANOEING, HIKING, SKIING, AND MORE.



YOUTH OUTDOORS DULUTH

Spending time in nature is good for you! But many children do not have the opportunity to experience all that the Great Outdoors has to offer. This “Adventure Gap” is due to lack of equipment, access to locations, experiences to build upon, and role models to draw inspiration from. In 2016, the Northland Foundation and the Minnesota Land Trust helped organize a broad coalition of outdoor groups, youth agencies, and educational institutions to address this gap. With support from the community, Youth Outdoors Duluth was born.

With a mission to ensure all youth have access to nature-based experiences, Youth Outdoors Duluth works with community groups to plan activities which bring underserved youth outside. In its first year alone, 420 kids were reached by offering activities like archery, rock climbing, canoeing, hiking, and skiing. In all, these youth spent over 14,000 hours getting some fresh air!

The group is going strong and with continued support will impact many more lives to come!

FINANCIAL SUMMARY

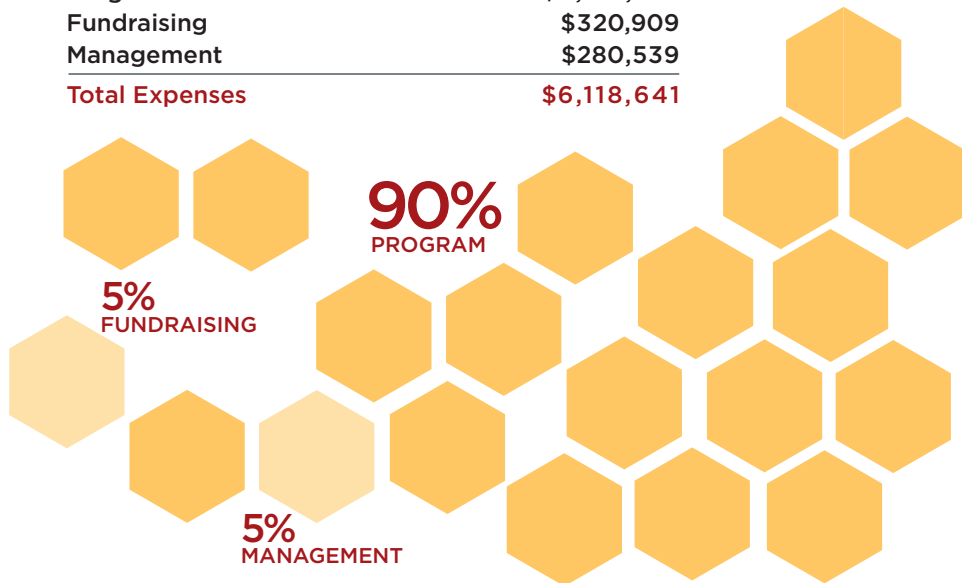
The Minnesota Land Trust is committed to strong fiscal health and socially responsible investments. The financial summary that follows is based on the complete financial audit which was conducted by Redpath and Company, Ltd. Their full report is available online at www.mnland.org or by contacting the Land Trust at 651-647-9590.

BALANCE SHEET FOR THE FISCAL YEAR ENDING JUNE 30, 2018

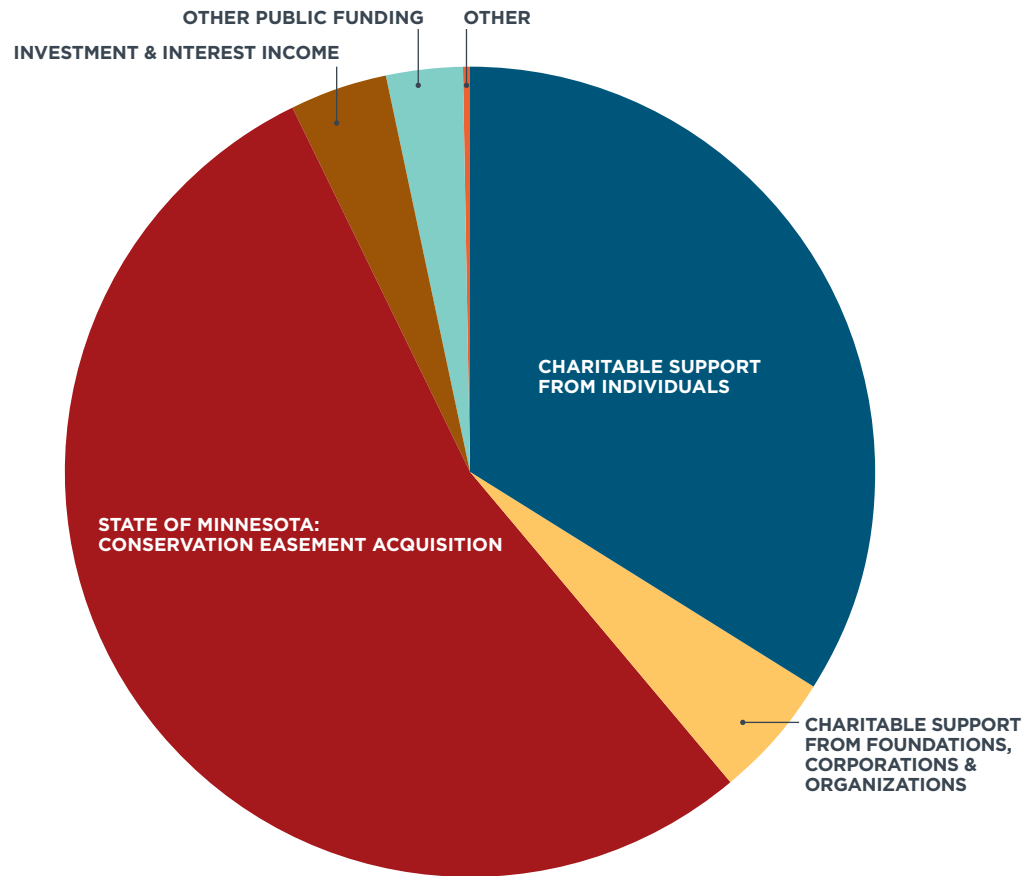
Assets	2018	2017
Cash, Pledges & Investments	\$7,912,935	\$5,545,966
Net Furniture & Equipment	\$15,565	\$20,906
Land Held for Resale/Conservation	\$199,650	\$310,659
Beneficial Interest in Real Property	\$744,200	0
Total Assets	\$8,872,350	\$5,877,531
Liabilities & Net Assets		
Accrued Payables	\$297,582	\$139,089
Total Net Assets	\$8,574,768	\$5,738,442
Total Liabilities & Net Assets	\$8,872,350	\$5,877,531

EXPENSE ALLOCATION

Program	\$5,517,193
Fundraising	\$320,909
Management	\$280,539
Total Expenses	\$6,118,641



FUNDRAISING & REVENUE



FUNDRAISING & REVENUE

Charitable support from individuals	\$3,038,562
Charitable support from foundations, corporations & organizations	\$463,160
State of Minnesota: conservation easement acquisition	\$4,814,512
Other public funding	\$363,672
Investment & interest income	\$254,836
Other revenue	\$20,224
Total Support & Revenue	\$8,954,966

VOLUNTEERS CONTRIBUTE TIME AND TALENTS



Bob Adair
Marcia Adair
Marge Amberson
Graham Ambrose
Tara Anderson
Robert Axtmann
Bob Bankers
Polly Bayrd
Tom Beaver
Matt Bredesen
James Brewer
Jim Burkett
Joan Burkett
Michael Burnett
Frances Cody
Craig Cold
Mark Crawford
Karen Dingle
Annette Drewes
Ross Dudzik
Dave Ethier
Richard Fetterly
Fitz Fitzgerald
Lisa Fitzpatrick
Deirdre Flescher
Jenna Fletcher
Brad Fuller
Sue Funk
Nona Goertz
Sean Gokey
Matthew Grimley
Gary Gustafson
Sonya Gylsen
David Hagen
Kendall Hains
Jeffrey Hayward
John Hedberg

Carter Hedeon
Eric Hedeon
Florence Hedeon
Tom Hoffmann
Bill Hohengarten
Dane Huinker
Pamela Joachim
Karl Johansson
Clifford Johnson
Dennis Kaleta
Jeanne Karnowski
Wood Kidner
David Knoblauch
Dag Knudsen
Gene Kremer
Ryan Kutter
Mary Kagaard
Scott Lagaard
Glen Laginess
Betsy Lake
Al Larson
Gregory Larson
Linda Larson
Steven Lee
Gloria Lindberg
Alexis Ludwig-
Vogen
Bill Majewski
Norma Malinowski
Laura Matson
Diane McGann
Bryan McGinnis
Hamlin Metzger
Clint Miller
Terri Nelson
Mary Newstrom
James Odden

Eric Olson
Lorrie Oswald
David Palmquist
James A. Payne
John Peck
GINNA PORTMAN AMIS
William Risse
Rick Rosvold
Bruce Scanlan
Tim Scanlan
Robert Scheierl
Dennis Scherberg
Bruce Schoenberg
Lee Scholder
Paul Scobie
Betty Selander
Charles Selander
Bill Sharbono
Steven Sicheneder
Rick Snyder
Greg Solberg
Katherine Solohub
Jim Stark
Susan Steinwall
Terry Stewart
Tim and Lori
Stieber
Teresa Thews
Steve Thompson
John Wachlarowicz
Frank Wagner
(Graduate Intern)
Mark Wendt
Erick Westerback
David White
Margie White
Ruthann Yeager

DONORS FROM JULY 1, 2017 – JUNE 30, 2018

ANNUAL GIFTS

Gifts that support operations, special projects and long-term stewardship of protected lands.

\$10,000 and above

Louise Anderson
 Julie Andrus
 Edward and Sherry Ann Dayton*
 Steven DeLapp*
 Libby Lincoln and Brad Fuller
 David and Leslie Gardner
 Elizabeth DeBaut and David Hartwell*
 Lucy Hartwell*
 Sue Funk and Wood Kidner
 Carolyn and Doug Kohrs
 Laurie Lucas
 Nivin and Duncan MacMillan Foundation
 Jerry Martin*
 Willie and Markell Rahr
 J. Timothy Ritchie estate
 William and Lynne Rogers
 Brad and Cyndy Wallin
 Jason and Aimee Wendberg

\$5,000 – 9,999

Josh Aas
 Paul Markwardt and Richard Allendorf
 Anonymous
 William and Elizabeth Brombach
 Dave and Ann Buecheck*
 Vince Leo and Susan Calmenson
 Gale Family Foundation
 Loren and Whitney Hansen
 Ed and Ellie Hayward
 Kaaren Howe
 Richard and Nancie Huston
 Heather Rein and Patrick Hynes
 W. Richard McCarthy
 Gregory Page
 James A. Payne
 Brenda and Thomas Ringold
 Teresa Thews and Paul Scobie*
 Gerry and Nan Snyder
 Nancy Warner
 Susan and Steve Wilson*

\$1,000 – 4,999

Ginna Portman Amis and Allan Amis
 Anonymous
 Chas and Nancy Arend
 Prospect Creek Foundation, a family foundation of Bruce and Martha Atwater*
 John Baird*
 Joel and Emily Barker
 Jon and Metta Belisle
 Donor Advised Endowment Fund of St. Croix Valley Foundation*
 Johanna Bell
 Rick and Ginny Black
 Bob Bowen*
 Matt and Laura Bredesen
 Martha Velasco Bush and Bob Bush
 Carey Family Charitable Fund
 Pam Endean and Colleen Carey
 Gary R. Carlson*
 Glenn Johnson and Michelle Couture
 Claire Olson and William Davidson
 Wendy Dayton*
 EcoTrust*
 Paul M. Egeland*
 Daniel O'Neill and Nancy Etwiler
 Barb Farrell
 Laura Wood and Paul Farrell
 Ben and Becky Field
 David and Claire Forsberg
 Ron Sternal and Nancy Gibson
 Tony and Cathy Grundhauser
 David and June Guckenberger
 Chuck Malkerson and Carolyn Hall II
 Jim Harris
 Jeffrey and Beth Hayward
 Carter and Florence Hedeon*
 Chris Shelton and Ellen B. Herman*

Cynthia Rogers and Timothy Huston
 Luke and Jessie Jacobson
 Karl and Beth Johansson
 Elissa Kadue
 Dean and Terry Kennedy
 Suzie Woodrich and David Knoblauch
 Joe and Sylva Kubicek
 Killian Rieder and Jeff Kulkowski
 Tracy Van Steenburgh and James Ladner
 Kris and Christine Larson
 Ross and Bridget Levin
 Bob and Siri Marshall*
 Peter Matteson
 Daniel May
 Nicholas Miller
 Clint and Patty Miller
 Elaine Rees and Gerald Morsello
 Donald H. Nelson
 Elizabeth W. Nelson
 James T. Nystrom Foundation
 Cheryl Paullin
 Jill Peterson
 Bret and Karen Petersen*
 Mimi and Benjamin G. Rae III
 Michael and Anne Ryan
 Tim and Kim Scanlan
 Dr. John Morrison and Carrie Scherer Family Fund of the Catholic Community Foundation
 John and Marilyn Fritz Shardlow
 Fay and Kurt Simer
 Dean Skallman
 Rick and Cheryl Snyder
 Wendy Sommer*
 Jeremy and Stacey Sosna
 Jim and Carol Stark
 Andrew and Cassidy Steiner
 Bruce and Julie Steiner
 Susan Steinwall
 Diane Stockman
 Roger and Kay Strand
 Tim and Diane Thorpe
 Joanne Von Blon*
 Kerrienne Blevins and Michael Walstrom



“I ENJOY
CONTRIBUTING TO
THE LAND TRUST,
BECAUSE
CONSERVATION
CAN'T WAIT.”
—PAUL RAYMAKER

Meg Anderson and David Washburn*
David and Beverly Wickstrom
Richard M. Williams
Mary Shedd and Steven Wilson*
Alexis Ludwig-Vogen and Kirk Vogen
Oswald and Jane Wyatt
Cindy Zitzmann
Charlotte Zumbusch

\$500 - 999

Darrell and Marge Amberson
Kathy Welte and Lowell Anderson
Kirsten Erickson and Patrick Anderson
Myron and Suzanne Angstrom
Kurt Apfelbacher and Ani Backa
Christine Beck
Mary Beckman
Patricia Bellace
Joyce Bish
Karen Bohnert*
Bob Bruce*
Michael and Susan Burnett
Eric Curran-Bakken
Joan Dayton
Tim and Gayle Devries
Chuck and Jackie Dietz

Becky and Jim Drahovzal
Joan R. Duddingston*
Peter and Rose Dwyer
Dave and Renee Ethier
Charles and Anne Ferrell
Bill and Janet Flynn
Victoria Gabriel
Richard and Susan Goldman*
Stephen and Candace Gouze
Sharon Paradise and Ken Haberman
Curt and Pat Hadland
John Velin and Jane Harper*
Jeff and Lucy Heegaard*
Mike and Karel Helgeson
Ed and Linda Hendrickson
Lee and Liz Hickory
Carl and Heidi Horsch
James Howard*
Robert and Jennifer Israel
Susan Lyback and Doug Jacobson
David and Holly Jorde
Joann Verweig and Thomas Karp
Martin and Esther Kellogg
Bill and Jennifer Kellogg
Randy Lake and Colleen Keough
Ray and Andrea Kim
Gerry and Renay Leone*
Harriet Ludwick

Rochelle Gunn and James Mayer
Daniel Jurgens and Ann Merrill*
Mary Miller
James Mohn and Heather Muster
Gary Nichols
Mark and Patti Norquist
Dwight and Marjorie Peterson
Russ and Kathy Rhode
Craig and Katharine Richter
James and Nicole Rickard
Jevon Anderson and Kelly Scanlan
Adam Schwartz-Lowe
Gena and Steven Setzer
George Shardlow
Stanley and Lucy Shepard*
Craig and Mariana Shulstad*
Charlotte Stephens*
Jon and Sarah Strommen
Henry W. TenBroek
Trendah Fund
Thomas Troester
Chris and Jenni Vitek
Erick and Beth Westerback
Laurel Westrom
Timothy and Betsy Wilson*
Steven and Beverly Wolf
Ronald and Dianne Yanish
Jennie Zumbusch

\$250 - 499

Paul and Peggy Adelman
Robert and Carolyn Albright
David Anderson
Nancy Conger and Tom Anderson
Donald Arbour
Lisa Wersal and Louis Asher
Thomas Bader
Gordon and Josephine Bailey*
Jason and Alicia Bame-Anderson
Bob Bankers
Brad and Sherrie Beal*
Donald and Keri Beck
Lois Beckmen
Roger Sorensen and Stephanie Boaeuf
Owen and Alison Brown
Paul Brown*
Tony Brown
Susan Hagstrum and Robert Bruininks
Jim and Joan Burkett
Bill and Pat Burns
Elaine and Foster Cole
Matthew Conroy
Jane Cowles
Page and Jay Cowles*
Ellie Crosby*
Edwin Van Der Hoek and Jennifer Debrow
George and Lynn Devins
Brian and Liz Dillon

Mackenzie Donald Family Fund
David and Kitty Dornfeld
Tim Edman
David and Susan Egloff*
Laurel Ferris
Fitz and Heather Fitzgerald
Stephanie McCleary and Glen Fladeboe
Sue Miller Foster
Elizabeth Fourniea
Marge Frost*
Todd Hendrickson and Sharon Fuller
Laurel Gamm
Amanda Giliotti
Todd Guerrero
David Hagquist
Paul Hagquist
Natalie Maiser and Andrew Harbeck
Michele Kelm-Helgen and Henry Helgen
Johnna Hobbs
Thomas and Libby Horner
John and Susan Howe*
Susan Swigart and Mark Hudson
Pam and Dwight Johnson
Walter and Harriet Johnson
Dan and Terri Johnson
Mary Kehrher-Schneider*
Stephen and June Keibler
Terry Kidner

Romy Silver-Kohn and Jesse Kohn
Rick Kollath
Marek and Ginger Kot
Thomas Tesch and Carol Kuechler
Scott and Mary W. Lagaard*
Michael and Barbara LaMotte
Linda Nelson and Michael Larsen
David and Melissa Lindholm
Judee Arnstein and Michael Lindsay
Steven and Catherine Long
Jeffrey and Elizabeth Martin
Clara Ueland and Walt McCarthy
Bryan and Karin McGinnis
Andrew McKibben
Chuck and Mary McNamara
Kathryn Iverson and Michael Menzel*
Lisa Arnold and Hamlin Metzger
Micki Blenkush and Dan Michaels*
Lucy Mitchell*
Chuck and Linda Moos
Ruth Anne Olson and Anthony Morley
Dale Pippin and Teresa Morrow
Joseph Muggli
Neitzke Family

DONORS FROM JULY 1, 2017 - JUNE 30, 2018

Stanley Nelson*
 Elizabeth Neuvar
 Joe and Mary Nosek
 Bethany and Allen Olmstead
 Judy K. O'Reilly*
 Charles and Lois Parsons
 Lyn Bergquist and Donald
 Pereira
 Grant and Debbie Peterson
 Ned and Sarah Phillips
 Kate Piper*
 Alan Polsky
 Lynn Gannon and Mark
 Popovich
 William Donohue and Jane
 Prohaska
 Anne and Brian Purrington
 John Quaife
 Doreen Lynch and William
 Ramsden*
 Robert and Jean Raz
 Tom and Kathy Rivers
 Phillip and Jane Rollins
 Reid Carron and Becky Rom*
 Rick and Denise Rosvold
 Mary Savina
 R. Bruce Schoenberg
 Greg and Steph Schweser
 Jerry Seck
 Paul Sitz
 Bruce R. and Jane
 Scharding Smedley
 Barb Smith
 Carla J. Smith
 Ben and Joanna Stacke
 Stephen and Susan
 Stedman

Don Steinke*
 Ann Thies
 Irma Thies
 Faye Ulrich
 Delon and Gail Underbakke
 Jean Silberman and Tom
 van der Linden*
 Gary and Bonnie Van Erp
 Ann Villanueva
 Dick and Judy Vogen
 Bob and Mavis Voigt*
 Jennifer and Travis Wahls
 Charles Willcox*
 Gordon Young
 Bob Zeglovitch and Jane
 Young

\$100 - 249

Peter and Jane Aas
 Margaret Brownell and
 Richard Allyn
 Tom and Arlene Alm
 Steve Alm
 John and Barbara
 Anderson
 Shirley and Charles
 Anderson*
 Kevin Anderson
 Frani and Mark Anderson
 Evan and Nancy
 Anderson*
 Scott D. Anderson
 Shane Anderson
 Anonymous
 Scott Armitage
 John Armstrong
 Tom Arneson*

Bob and Pat Astrup
 Robert Axtmann
 Joseph and Michael Bailey
 Gwen Barker
 Gibson Batch
 Mary Kay and Paul Bates
 Shirley and Bill Baxter
 Tom and Ann Beaver
 Benjamin Becker
 Jacqueline Becker
 Cole and Terry Becker
 Toni Beitz
 Elizabeth McNerney and
 Donald Bell
 W. Bruce and Carol D.
 Benson
 Jim Benson
 Anne Bent
 Eric Bergerson
 Michael and Ruth Bettendorf
 Suzanne Blue*
 Marcy Bode
 Thelma Boeder
 Mark and Susan Bonitz
 Peggy and Glen Booth
 Stephan Shubick and
 Linda Boothe
 Will and Margee Bracken*
 Nancy and Steve Braker
 Mike and Gini Breidenbach
 Dorothy Slegman and
 James Brewer*
 Carol and Conley Brooks Jr.
 Susan Brown*
 Dick and Vera Brown
 Rodney and Carolyn
 Bunkers

Andrea Brubaker and John
 Bussey
 Frank and Kristi Cadwell
 John and Jackie Carlander
 Amy Carlson
 Richard and Margaret
 Carman
 Cary Carson
 Billie Cashman
 Peter Lien and Amada
 Cefalu
 Margaret Cellette
 Chuck and Terry Chism
 Virginia Cooper
 Denis and Nancy Cornell
 Dennis Courtier
 Jenny Cowette
 Dick and Georgeanne Croft
 Bill and Kate Cullen
 Michael Cummings
 Karin Jo Dahl
 James Davnie
 Len and Beth Dayton
 Roger and Irene Dellert
 Steve and Nancy Deppe
 Charles P. Driscoll
 Eric and Mary Jo Duncan
 Joel and Sandra Dunnette*
 Dunnewind Family
 Foundation
 Dave and Brenda Dvorak
 P. James and Marian Dyck
 Abby Finis and Julia
 Eagles
 Amy East-Glenn
 Amy Knox and Mark
 Edstrom

Lonnie Ellis
 David Elowson
 Robert and Elsie Emery
 Paul Enenbach
 Jason and Dani Engelhart
 Michele Esposito
 Wendy Evans
 Charles H. Eversman
 Ronald and Grace Falk
 Mary Farrier
 Mary Killeen and Jacob
 Fillion
 Dennis and Joyce Findley
 Arlene Flemmer*
 Dean and Joanne Flugstad
 DJ and Jacqui Forbes
 Bill Foss
 Rodney and Susan Foss
 Craig O. Freeman
 Bayard T. French*
 Ian and Carol Friendly
 Joseph and Patricia Funk
 Steve Funk
 Terry and Sandy Gappa
 Bruce and Lois Garbisch*
 Kathie and Ken Geiger
 Mike Gellerman
 Christopher and Julie
 Gilbert
 Bill and Diane Gilbertson
 Kathleen Gill
 Mildred Gjertson
 Morris Gjessing
 Theodora Economou and
 Charles Glasrud
 Mike and Jennifer
 Goblirsch
 Paul and Annette Godtland*
 Nona Goertz
 Melvin Goldenbogen
 Sandra Gould
 John and Susan Graber
 Judith Graham
 Don and Gerry Grant
 Gregory and Maureen
 Grazzini
 Janet and John Green*
 Kevin Gregerson
 Matthew J. Grigal
 Joanne Groten
 Brian Gruis
 Randy and Yvonne
 Guzman

David and Mary Hagen
 Marlene and William
 Haider
 Janis Hall
 Thomas and Marcie Hamel
 Susan and Brent Hames
 Dariusz Szewczak and
 Rachel Hampton
 Marie Hauser
 Mary Hauser*
 Janet Hayman
 John and Jean Hedberg
 Robert and Carolyn Hedin
 Patrick and Carrie
 Heffernan
 Bill Hefner
 Ross and Ruth Heilman
 Willard Everett and Betty
 Lou Hein
 Sandra Kaplan and Don
 Hickman
 Warren High
 Darryl and Alice Hill
 Matthew Hobbs
 Tom and Nancy Hodnefield
 Tom and Bea Hoffmann*
 Kent and Cheryl Holen
 Keith Holley
 Ruth Howe
 Meredith Howell
 Michael Huber
 Linda Huhn
 Keith Johnson and Julie
 Hunter
 Steve and Amy Lee
 Isaacson
 Paul R. Iversen
 Pat and Diane Jacoby
 Kristen Jeide
 Heidi Jerome
 Lorraine Jirele*
 Trudy Joerg
 Douglas Johnson
 Rodney and Lillian
 Johnson*
 Bruce and Margaret
 Johnson
 Marianne Johnson
 Orville Jonsrud
 Jay Weiner and Ann
 Juergens
 Margi Preus and Arno
 Kahn



Richard and Maggie
Karschnia
Ronald and Pamela
Kaufman
Steve Kaukola
Carol Kaveh
Tim Keane
Molly Maloney and David
Kelley
John and Lynda Kern*
Thomas and Anna
Kieselbach
Joseph Kingman
Richard Kingsley
John Kirchner
Jeffrey Kirst
William Kittel
Julie Klassen*
Mary Hartnett and Joe
Knaeble
Chelsea Knauf
Christopher Knopf
Deirdre Flesche and Dag
Knudsen*
Dan and Sandra Korthuis
John Koziol
John and Melissa
Kreishman
Ted Krill
Larry Lark
Senator Cal Larson
Pam Larson
Laura and William Le Voir-
Barry
Richard and Sally Leider*
John and Susan
Lenczewski
Douglas H. Lewis
Walter and Darcy Ling*
Jean Ljungkull
Mary Long
Scott and Sara Lounsbury
Anna Lovrien
Larry and Karen Lundblad
Bill Lyon
Kurt and Mary Lysne
Fay and Jeff Maas
James MacNutt
Susan Naramore Maher
Ryan and Carolyn Majkrzak
Kathy Maleck
Luther Malmgren
Richard and Monica
Mandell

Angela and Paul Mann
Larry and Karin Margolis
Caroline Marks
Merritt Marquardt
James R. Marshall
Darlene Mattson
Christine McArthur
Emily McAuliffe
Dianne Aisenbrey and
Bruce McBeath
Thomas and Kathleen
McCaffrey
Susan McCallum
John McDonald
Bob and Mary McDonald
Dan and Lucy McInerney
Jack and Terri McKeon
Rob and Becky McKim
L. David Mech*
Peter and Claudia Medin
Kay Mehl
Jeffrey Bircherm and
Gretchen Mehmel
Peter McSwiggen and
Barbara Meier
Rick and Joan Meierotto*
David Hammer and Randy
Meincke
Christopher Meyer*
Michael K. Miller
Jim and Pat Miller*
Ran and Beth Miner*
David and Karen Minge
Sarah Hilligoss-Moe and
Andrew Moe
Dennis Moon
George and Mary McHugh
Morrison
Michael Monroe and Debra
Mueller
Jocelyn Muggli
John Munson
David and Anne Murphy
Barbara Myers
Mark Nammacher
Nicholas Nash
Amanda Hedlund and Matt
Neil
Nekola Family Charitable
Fund of InFaith
Community Foundation
Bonnie E. Nelson
Delano R. Nelson
Darby and Geri Nelson



Ruth Nelson
David and Anna Newton
Dale and Kathryn Newton
Don and Gerda Nightingale
JoAnn Thomas and Doug
Nopar
Pat and Beth Nunnally
Rita O'Connell
Jack and Lori Oelfke
John and Yvette Oldendorf
Eric and Heidi Olson
Rolf Olson
Mark O'Malley
John and Kristin Oswald
Virginia Pansch
Roger and Hollie Parsons
Debbie Pearson
John and Linda Peck*
Robert and Susan Pederson*
Anne Peek
David and Cindy Pelowski
Beryl Perry
Allan and Corrine Petersen
David and Andrea
Peterson*
Dan Petrik
Louise B. Plank*

Debra and Timothy Plude
Allen and Ramona Potter
David Price
Michael Ptak
Joel and Jeanne Pumper
Irene Qualters*
Thaddeus Raczek*
Jim and Joan Rataczak*
Mike and Jodi Refsland
Fred and Judy Regennitter
Julie Reichhoff
Charles and Susan
Reinhart
John and Rickie Ressler
Kristen Ringham
Kristin Mroz Risse and
William Risse
Mary Robinson-Jamison
Norm and Emily
Rosenberg
Stephen Rosholt
John A. Roxbury Jr.
Steve and Marjie Ruth
Matthew and Carrie Ryan
Dennis M. Ryan
Tom and Mary Salkowski
Steve and Karen Sanger

Thomas and Anne
Schapman
Robert and Karen Scheierl
Winnie White-Scherber
and Dennis Scherber
Mike and Roxanne
Schlasner
Anne and Jason
Schlukebieer
Larry and Carolyn Schmidt
Cynthia Schou
Greg Schou
Lowell and Elizabeth
Schow
Fred and Jan Schroeder
Richard and Robyn
Schroeder
Bob and Kimberly Scott
Aaron and Jennifer Seeley
Karl and Emily Sevig
George Shardlow
Bob Shepard
Steven and Jill Sicheneder
Suzann Willhite and Kristin
Siegesmund
Tom and Sharon Simpson
Al Singer

Dick and Ella Slade*
Sonja Smerud
Joan Smith
Scott Smith
David and Stacey Smith
Carl and Sue Smith
Larry Snow
Leif and Jeanne Solberg
Nancy Frevert and David
Solohub
Matthew and Senita
Sonnek
Mike and Peg Sowada
Barbara Spannaus
Michael Spellman
Michele Spooont
Jerry and Carol Starkey
Christine Stebner
Irene Steffenson
Kathleen Stenersen
Terry and Mimi Stewart
Tom and Christine Stoa
John and Eleanor Strand
Gary Strandemo
Denny and Jan Strootman
Jacob Sundquist
Donald Swanson*

DONORS FROM JULY 1, 2017 – JUNE 30, 2018

Donald and Wildie Swanson*
 Jim and Kay Tennesen
 Gery Then*
 David Lauth and Lindsey Thomas
 Robert and Bonnie Thomsen
 Darrell Thorstenson
 Dean and Mary Tilley
 Marta Cleaveland and Paul Tosto
 Alex Tsatsoulis
 Roger and Carolyn Vacek
 Virginia Van Dyke
 Judith Van Dyne
 Eric Vehe
 Eric Viken
 Mary Volk
 Heidi Waldkirch
 David C. Warner
 Eric Watkins*
 Stuart Webb
 Lyle and Cheryl Wedemeyer

Ken and Elizabeth Weir
 Karen Welke
 Dennis and Maureen Welsch
 Judy Gibbs and Shawn Wentz
 Claralouise Wheeler
 Janice and Paul Wicklund
 David Wilkinson
 Renee Willette
 Marilyn Williams
 Wayne Winick
 William Wischmeyer
 Joe and Laurie Wlosinski
 William Woehrlin*
 Michael and Donna Wolsted
 Charles W. Wright
 Ben and Donna Wright
 Jena Wuu
 Bryan Wyberg
 John and Eleanor Yackel*
 Peter Young
 Peder Yurista
 David Zarkower
 Michael Zicus

Gifts up to \$99

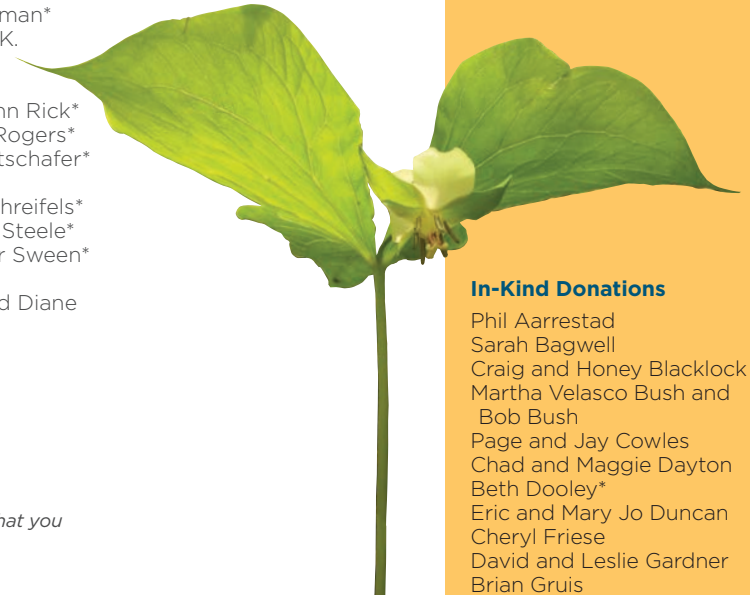
Thank you to the many donors in this category. Only 20-year donors are listed.

Susan Blom*
 Mary Blood*
 Bruce and Mary Davis*
 Al and Barb Gulden*
 Nicholas and Geraldene Gulden*
 Jennie Hakes and Steve Hawrysh*
 Jim and Maureen Henderson*
 Mike and Ellen Heneghan*
 David Jacobson*
 James S. Johnson*
 Donald and Joyce Kitzrow*

* 20-Year Donors

We have made every effort to ensure accuracy and ask that you contact us at 651-647-9590 with any concerns.

Dennis Kresal*
 Linda Liestman*
 Alan and Lori Lohman*
 Dr. and Mrs. John K. Meinert*
 Patricia Minton*
 Gene and Mary Ann Rick*
 Dan and Cynthia Rogers*
 Jeff and Linda Rotschafer*
 C. Perry Schenk*
 Henry and Lisa Schreifels*
 William and Carol Steele*
 Patricia and Roger Sweet*
 Merle H. Sykora*
 Duncan Storlie and Diane Tessari*
 David Tincher*



In-Kind Donations

Phil Aarrestad
 Sarah Bagwell
 Craig and Honey Blacklock
 Martha Velasco Bush and Bob Bush
 Page and Jay Cowles
 Chad and Maggie Dayton
 Beth Dooley*
 Eric and Mary Jo Duncan
 Cheryl Friese
 David and Leslie Gardner
 Brian Gruis
 Carl Haensel
 Richard and Nancie Huston
 Bruce and Margaret Johnson
 Jeanne Kingston
 Tom Landwehr
 Laurie Lucas
 Bill and Beth McClelland
 Mark Norquist
 Todd Norsten
 Willie Rahr
 Paul Raymaker
 Killian Rieder
 Dean Tilley
 Ken and Terry Visger
 Nancy Warner
 Steve Smith and Deborah Zvosec



SUSTAINING MEMBERS

These individuals make generous gifts on a monthly basis. You can be a sustaining member at mnlnd.org or by calling 651-647-9590.

Brad and Sherrie Beal
 Benjamin Becker
 Richard and Margaret Carman
 David Elowson
 Fitz and Heather Fitzgerald
 Laurel Gamm
 Mike Gellerman
 Loren and Whitney Hansen
 Randy Lake and Colleen Keough
 Romy Silver-Kohn and Jesse Kohn
 Michael and Barbara LaMotte
 Kris and Christine Larson
 Laurie Lucas
 Emily McAuliffe
 Andrew McKibben
 Lisa Arnold and Hamlin Metzger
 Clint and Patty Miller
 Heather Muster and James Mohn
 Dennis Moon

Amanda Hedlund and Matt Neil
 Janet Olson
 Cheryl Paullin
 Mary Savina
 Jevon Anderson and Kelly Scanlan
 Anne and Jason Schluckebier
 Cynthia Schou
 Adam Schwartz-Lowe
 Dennis and Susan Searle
 John and Marilyn Fritz Shardlow
 Sonja Smerud
 Carl and Sue Smith
 Susan Stanich
 Alex Tsatsoulis
 Virginia Van Dyke
 Eric Vehe
 William Walker
 Marilyn Williams
 David Zarkower



IN MEMORY OF:

Dallas Anderson, by Louise Anderson
Leonard Anderson, by Bethel Anderson
Dr. Robert Becker, by Jacqueline Becker
Theodore & Edna Bergman; June & Vern Lake, by Randy Lake & Colleen Keough
Emil Boerner, by Peter Boerner
William & Arlene Bryson, by Jeanine Vorland
Carter Christensen, by Paul & Gloria Christensen
Joe Cleaveland, by Paul Tosto & Marta Cleaveland
Philip Cook, by Elsie Cook
Thomas Cowette, by Jenny Cowette
Bob & Betty Crampton, by Brad & Sherrie Beal
Elaine Dahl, by Karin Jo Dahl; Mary Long; Virginia MacDonald; Marna Stevens
Lowell Dahl, by Joe & Sylva Kubicek
Frank H. Delaney Jr., by James & Anne Delaney
Les & Phyllis Deppe, by Steve & Nancy Deppe
Wesley Dow, by Sue Kramolisch
Cynthia Driscoll, by Charles P. Driscoll
Micala & Gust Edwardsen, by Brenda & Thomas Ringold
Elly, by Virginia Van Dyke
Robert Garbisch, by Bruce & Lois Garbisch
Paul Gershone, by Jerrold Gershone
Mary Giles, by Margaret Bowe; Jim Harris; John & Melissa Kreishman; Michael & Barbara LaMotte; John & Jane Sweeney; Heidi Waldkirch; David & Ruth Waterbury; William Wischmeyer
Irene Grabmeier-Holly, by Richard Grabmeier
Grandpa Tom, by Rachel Melis & Robert Galler
Maria W. Faust, by Ted Haaland
PO Hagstrom, by Lynn Haldy
Neil E. Haugerud for migratory flyways, by Grant & Debbie Peterson
Robert Hemmingson, by Ann Villanueva
Todd Hervey, by Robert & Jean Raz
Don Hilligoss Jr., by Sarah Hilligoss-Moe & Andrew Moe
Brandon C. Johnson, by James S. Johnson

Richard G. Jones, by Nanette Jones
Ann Kaner-Roth, by Michele Spoot
John Karos, by Jim & Kay Tennesen
Jonathan Kinzer, by Lonnie Ellis
Julie Klassen, by Scott Dingwall; Seth Goodspeed; Richard & Kathy Harrington; Clark & Eve Webster; Jena Wu
Kari Ann Koskinen, by Luanne Koskinen
Tom Link, by Sandra Gould
Arnold Long, by Steven & Catherine Long
Marguerite MacGillis, by Pierre MacGillis
Pamela A. Matteson, by Peter Matteson
Bill McDonald, by David Jacobson
Elizabeth Muir, by Jacqueline Dowell; Bonnie Heidel; James R. Marshall; David & Laurie Marshall; Joel & Jeanne Pumper
Mary Jane Munson, by John Munson
Fred Myers, by Barbara Myers
Aaron Nelson, by Gary & Cindy Nelson
Otis, by Peter Martin
Robert Pansch, by Virginia Pansch
Parents, by Mark O'Malley
Colleen Peterson, by David & Andrea Peterson
Lawrence & Helen Piper, by Kenneth & Mary Handt
Steve Reisman, by Deena Reisman
Dewey Ringham, by Kristen Ringham
Rumohr Roberts, by Laurel Gamm
Eli Rosenbloom, by Janet Rosenbloom
Erika Sitz, by Paul Sitz; Jon & Sarah Strommen
Robert J. Sivertsen, by The Charles A. Weyerhaeuser Memorial Foundation
Julie Smeby, by Rolf Smeby
Adeline Sopa, by Caroline Kostroski
Barbara Sovell, by Donald Sovell
Bryce TenBroek, by Henry W. TenBroek
Joan & Oliver Washburn, by David Washburn & Meg Anderson
Jim Waterman, by Jerry Stamm
William Wever, by Mary Wever
Bonnie Yuvaraj, by Eric Yuvaraj

IN HONOR OF:

Sabin Adams, by Jim Benson
Bainly Woods Preservation Association, by Fred & Judy Regennitter
Karna Larson & Sequoia Block's wedding, by Margaret Cellette
Mark Bushman, by Ellen Neuenfeldt
Bob Fox, by Ben & Barry Wolfe
Brad Fuller, by Jane Fuller
John C. Gale, by Gale Family Foundation
Gifts that can only come from wild places, by Mike & Gini Breidenbach
Sophie Kerman & Jim Johns, by Kristin & Sarah Maier
Mr. & Mrs. Alvin Kaufman, by Ronald & Pamela Kaufman
Wood Kidner, by David Wilkinson
Liz Erickson & Joe Krekeler's wedding, by Margaret Cellette
Alexis Ludwig-Vogen, by Erin & Brad Jordahl Redlin
Dorothy Maleck, by Kathy Maleck
Marchesani Family, by Thomas & Anna Kieselbach
Lawrence Morgan, by Caleb Wisdorf
My extraordinary new daughter-in-law, by Joyce Denn
Emily Novak Daehn, by Carolyn Rush
David Pearson who loves Minnesota even from his hospice bed, by Stephanie Pearson
Britta Raine Finzen, by Susan Slater
Amy Shaunette, by Caitlin Guilford
Tara Stroup, by Joy Stroup
Megan & Nathan Tracy, by Chuck & Anna Tracy
Virginia Van Dyke, by Becky & Jim Drahovzal
Brad Wallin, by Bill & Beth McClelland
Luciana Wanzenried, by Hans Wanzenried
Bridgit Waterman, by Britt Waterman
Thomas F. Waters, by Donald Pereira & Lyn Bergquist



CORPORATIONS, FOUNDATIONS AND ORGANIZATIONS

Alchemy 365
 Alton Foundation
 Ameriprise Financial Matching Gift Program
 Anonymous
 Athwin Foundation
 Barr Engineering Co.
 Bee Kind MN, Inc.
 The Beim Foundation*
 Belwin Conservancy
 Bent Paddle Brewery
 Best Buy Co., Inc.
 Blue Cross Blue Shield of Minnesota Matching Gift Program
 Cedaero
 Chankaska Creek Ranch & Winery
 The Charles A. Weyerhaeuser Memorial Foundation
 Community Opportunity Fund and Four Cedars Environmental Fund of the Duluth Superior Area Community Foundation
 The Cornerstone Group, Inc.
 Crow Wing Kayaks
 The David Winton Bell Foundation*
 Dellwood Foundation
 Dodge Nature Center
 Dougherty & Company LLC
 Duluth Coffee Company
 Duluth Superior Area Community Foundation*
 Echo Fly Fishing
 Enbridge Energy Company
 Far Out Fly Fishing
 Faribault Woolen Mill Co.
 FLW Fishing League Worldwide
 Fredrikson & Byron Foundation
 Fredrikson & Byron P.A.

Frost River Trading Company
 Gray Plant Mooty PA
 Great Lakes Fly Shop
 Hardenbergh Foundation
 HRK Foundation Matching Gift Program
 Impact Proven Solutions
 Johnson's Bakery
 The Laura Jane Musser Fund
 Listening Point Foundation
 Lloyd K. Johnson Foundation
 Loll Designs
 The Longview Foundation
 MAHADH Fund of HRK Foundation*
 Marathon Foods
 Margaret Rivers Fund*
 The McKnight Foundation*
 Medtronic Matching Gift Program
 Mend Provisions
 Merry Little Bath Company
 Messerli & Kramer P.A.
 Minneapolis by Bike
 The Minneapolis Foundation Matching Grant Program Fund
 Minnesota Youth Ski League
 Minnesota Zoo Foundation
 The Morsman Family Foundation
 National Camera Exchange
 Open Door Foundation
 Patagonia
 Patrick and Aimee Butler Family Foundation*
 Peregrine Capital Management, Inc.
 The Polaris Foundation
 Rahr Corporation
 Rahr Foundation
 Red Wing Chiropractic and Acupuncture Clinic*
 Red Wing Shoes

Rhino Rotational Molding
 Riverbridge Partners Matching Gift Program
 The Saint Paul Foundation
 The Sherwin-Williams Company
 Ski Hut
 Stantec Consulting
 State Bank of Faribault
 Steven C Leuthold Family Foundation
 Summit Brewing Company
 Sunrise Banks
 Sven Clogs
 Symphony Boat Company
 Thomson Reuters Matching Gift Program
 Thrivent Financial Matching Gift Program
 Toro Giving Program
 Total Wine & More
 UnitedHealth Group Matching Gift Program
 U.S. Bank
 U.S. Bank Foundation Matching Gift Program
 Vikre Distillery
 Vista Outdoor
 Vortex Optics
 Waterworks Lamson Reels
 Well Adjusted
 White Bear Unitarian Universalist Church
 The Wildflower Project
 Wintergreen Northern Wear
 Wood From The Hood
 Woodchuck USA
 Xcel Energy
 Xcel Energy Matching Gift Program

RAINY LAKE FUND

Gifts to this fund support land protection activities in the Rainy Lake area.

Paul Anderson
 Anonymous
 Meredith Ellis, in memory of Van & Lou Ellis
 Ernest Oberholtzer Foundation, in memory of Tim Heinle
 Hawley Family Foundation
 Helen M. Heller, in honor of Phyllis & Dale Callaghan
 Anne Helms
 A.C. Hickox
 Berit Nelson & Blake Hoel
 Larry & Jo Kallemeyn
 Paul & Kay Larsen
 Kurt & Mary Lysne
 Gary & Jane Marsden
 Jim & Sally Martineau*, in memory of Stephanie White
 Peter & Janice Mattina
 Robert & Marveen Minish
 Sarah Dunning & David Siebert
 Samuel Stenson
 Peter & Kathleen Swenson
 Bruce Scott, Linda Scott, Kathy Sylvia
 Philip & Carolyn Wallis

LANDOWNERS GRANTING CONSERVATION EASEMENTS OR LAND

Dale and Betty Barrett
 James and Joan Burkett
 Jonathan Burris, Lavender Springs Tree Farm LLC
 Thomas DeCorsey
 Encampment Forest Association
 Mary Killeen and Jacob Fillion
 Erik and Shannon Finney
 James and Debra Funk, Linda Funk
 David and Leslie Gardner
 Gita Ghei, Kiren Ghei, Raman Ghei
 David and June Guckenberger
 Stephen and Janet Hanon, Wayne and Diane Haslach
 Dennis Jannusch
 Donald and Francine Kluck
 Keith Johnson, Wayne Johnson, Pines Land Mgmt Co., LLP
 Barbara Mulvaney
 Greg and April Olson
 Gregory and Crystal Peterson
 Joseph Slavec
 Bruce Paine, Jason and Jan Smude
 Jason and Aimee Wendberg
 Diane Westmore, Deer Lodge, LLC
 YMCA of the Greater Twin Cities
 Zephyr Valley Community Cooperative

ENCAMPMENT RIVER AREA CONSERVATION FUND

Gifts to this fund support land protection activities in the Encampment River watershed along Lake Superior's North Shore.

Julie Andrus
 Bruce & Mary Bean, in honor of David Pratt; Brad Wallin
 Priscilla Brewster
 Valerie Brookeman, in memory of Tim Ritchie
 David & Elizabeth Budd, in memory of William & Nancy Budd, Sr.
 Peter Budd
 Charles & Marion Burton, in memory of Katherine K. Burton
 Ann Cassell, in honor of Ann Cullen Smith
 Nancy Tessmer & Tom Caswell III, in memory of John Caswell
 Stewart & Lesley Crosby
 Len & Beth Dayton, in memory of Jane D. Hall
 Susan Dilday, in honor of Molly P. Nagle; Stephen T. Pratt; Jennifer P. Stattelmann; Alice Sanders; John Nagle
 John & Sybil Eakin, in honor of Charlotte & Ward Johnson
 Steve & Liz Ellmann
 Teedie Mairs Frankenbach
 George Gephart
 Al & Sally Hanser, in honor of Woody Kingman
 Douglas & Vicki Holmen
 Charlie Hornig
 Tommy Johns & Julie Gillette Johns, in memory of Olive Carlaw
 Eric & Margit Johnson, in memory of Bernie Penner
 Amy White & Nick Johnson
 Elizabeth Kelsey
 John & Lisa Kelsey
 Christine Linsmayer
 Nick & Linda Linsmayer
 Rob & Aimee Mairs
 Elizabeth Mairs
 Bob & Helen Mairs, in memory of Jean McLean; Nancy Gephart; Tim Ritchie
 Patricia Boulware & Susan Mairs, in memory of Jean Mairs McLean; Nancy Mairs Gephart
 Dean & Danielle Mathews
 Jill McCarthy
 Michael & Kay McCarthy*
 Bill & Beth McClelland, in memory of Don McCarthy
 Stuart & Diane McLean, in memory of Albert & Jean McLean
 David & Sandy Myhre, in memory of Connie Myhre
 Bridget O'Brien & Mark Nelson



The Nicholson Family Foundation: Todd & Martha Nicholson Fund, in memory of Pondie Ordway
 Nicholson Johnson & D. Ward Johnson, Sr.
 Julie Smendzuiik-O'Brien & D. William O'Brien, in memory of Dan & Sallie O'Brien
 Tom & Meredith Olson
 Charles Pitzele, in honor of John Bathke
 Lucinda Pratt, in memory of David Pratt
 Daniel & Terri Pratt, in memory of David Pratt
 Nancy Priedeman*
 Daniel & Alicia Ritchie, in memory of J. Timothy Ritchie
 Chuck Ritchie, in memory of Sharon Ritchie
 Wallace P. Ritchie, Jr., MD, in memory of Barbara J. Ritchie
 Wint & Tina Ritchie
 Tom & Kathy Rivers
 Eric Schmitt, in memory of Granny Carlaw
 Maggie & Contee Seely
 Michael Silverson
 Jennifer Thompson & Christopher Stevens
 Cynthia Hill & William Stevens
 John J. & Mary M. Taylor*, in memory of John M. Budd
 Lynelle & Samuel S. Thorpe IV, in memory of Sam Thorpe III
 Tom & Holly Traub, in memory of Helen Kingman West
 Brad & Cyndy Wallin
 Katie & Charlie White
 Margot Willett
 Andrew & Emily Winter, in memory of Roger T. Sahr
 Helen Woehrlin, in memory of Molly Duff Woehrlin
 Sue Woehrlin, in memory of Molly Duff Woehrlin
 Joy Wonsowicz, in honor of the Stephen Pratt family;
 Walter & Harriet Pratt

Design: Barbara Pederson
 Special thanks to Rebecca Field, Hansi Johnson, John Pennoyer, Paul Raymaker, Bryan Wood and our staff for their generous gifts of photography for this report.



7th Annual Minnesota Made

Minnesota Made

**SAVE-THE-DATE
05.30.19**

DULUTH MAYOR
EMILY LARSON AT OUR
ANNUAL FUNDRAISER.



MINNESOTA LAND TRUST

www.mnland.org

2356 University Ave W, Suite 240
Saint Paul, MN 55114

394 S Lake Ave, Suite 404
Duluth, MN 55802

651-647-9590
Toll Free: 1-877-658-5263
Email: mnland@mnland.org

BOARD MEMBERS

Robert Bush
Ted Erickson
Brad Fuller
Tony Grundhauser
Loren Hansen | Vice Chair
Jeffrey Hayward
Patrick Hynes | Secretary
Wood Kidner | Treasurer
David Knoblauch
Caroyl Kohrs | Vice Chair
Bridget Levin
Alexis Ludwig-Vogen
Tina May
Mark Norquist
Jim Payne
Rick Rosvold
John Shardlow
Fay Simer
Rick Snyder
James Stark
Joe Sullivan
Brad Wallin | Chair



STAFF AND BOARD ON A RECENT
OUTING AT BARN BLUFF, RED WING

STAFF

Kris Larson Executive Director | **Nick Bancks** Program Manager | **Gini Breidenbach** Lake Superior Projects Coordinator
Barbara Farrell Staff Paralegal | **Kristina Geiger** Program Manager | **Hansi Johnson** Director of Recreational Lands
Sue Martinez Administrative Associate | **Susan McCallum** Director of Finance & Human Resources
Andrew Moe Program Manager | **Wayne Ostlie** Director of Land Protection | **Vanessa Perry** Program Manager
Daryl Peterson Director of Restoration Programs | **Ned Phillips** Conservation Information Systems Manager
Amie Schiller Stewardship Associate | **Ruurd Schoolderman** Program Manager | **Gena Setzer** Staff Attorney
Ann Thies Director of Conservation Stewardship | **Alex Tsatsoulis** Development & Communications Director
Mark van der Linden Land Protection Coordinator | **Beth Westerback** Development Manager

In addition to the staff members listed above, the following individuals and organizations provide high-quality services that enhance our mission: **Kathy Childers** Communications | **Jimelle Duncan** Bookkeeping | **Community GIS** Mapping
Barbara Pederson Design | **Bill Penning** BWSR contractor