

*Some things really are
meant to be forever.*



MINNESOTA LAND TRUST
MID-YEAR REVIEW
MAY 2017



I believe that organizations have traits, like those of individuals, which work alongside mission and strategy to drive results.

As you read this mid-year review of our work, you'll see examples of how these qualities have played out over our 25-year history.

Strategic: The accumulated impact of decades of focused work in one place – in this case Burntside Lake – protects shoreline and boreal forest, but also preserves our cultural heritage.

Innovative: Protecting Minnesota's trout streams and their larger watersheds goes well beyond the well-being of an iconic species. It helps protect water quality and a way of life for all of us.

Persistent: Good conservation requires grit and sometimes great patience as seen in the Island Lake project. But preserving water quality and rare habitat is definitely worth the wait.

Motivated: We're looking ahead to accelerate our pace. We intend to complete as much conservation in the next 10 years as we did in our first 25.

Trusted: Ultimately, it all comes down to the "trust" part of our name. No other class of non-profits promises to take care of its assets forever.

Thanks for being with us.

Kris Larson
Executive Director



Conservation and

BURNTSIDE LAKE: CONSERVING A SENSE OF PLACE

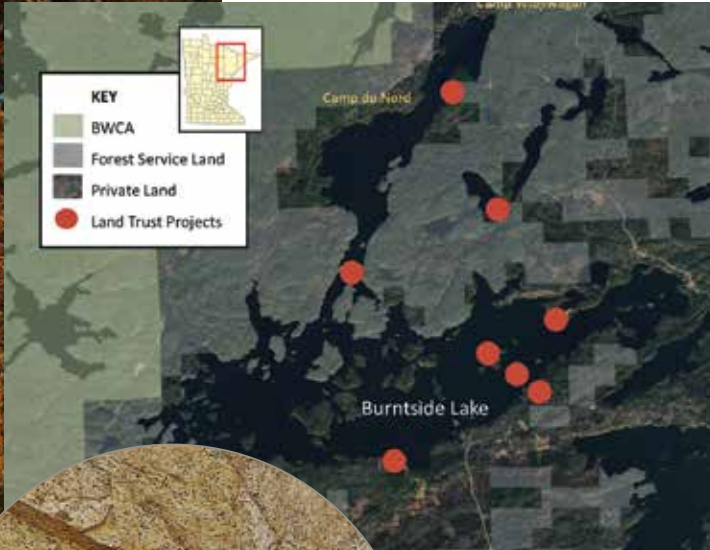
Human beings are drawn to dramatic landscapes. These places ignite our natural sense of adventure, and our desire to explore, climb and discover.

So often, once we experience these places, we want to be there all the time. We build roads to get there, and bring along the comforts of home. Sometimes we come to the brink of destroying the things we care about the most.

Burntside Lake represents a remarkable example of one of these places

that has been at risk for losing the very characteristics which make it so unique. Fortunately, it is a place that represents some of the most enduring work of the Minnesota Land Trust.

Perhaps more than any other, Burntside Lake is an icon of Minnesota's great wilderness experience. As an entry point to the BWCA, thousands of kids and families begin their first wilderness adventures from YMCA camps at du Nord and Widjiwagan.



DID YOU KNOW?
→ Archeological sites on private property are largely unprotected. These Burntside Lake pictographs are permanently preserved by a conservation easement held by the Minnesota Land Trust.

culture protected forever.

Burntside Lake has also inspired generations of nature lovers through the pen of Sigurd Olson, whose Listening Point sanctuary gave shape to his writing and advocacy.

Today, the Minnesota Land Trust permanently protects nearly 10% of Burntside's private shoreline on ten different properties. This includes our first project in 1996 which contains a rare Native American pictograph. It includes icons of the lake such as Camp Van Vac and Listening Point, as well as a recent project that protects an island opposite

Listening Point. And better yet, several more are in the works.

Beyond the aesthetic, the cold, clear and deep waters of Burntside Lake are considered of "Outstanding" biological significance by Minnesota's DNR. It supports a cold water fish community that includes lake trout, lake whitefish and tullibee.

Burntside's forests and shorelines provide habitat for moose, black bear, pine marten and Canada lynx. It's in the heart of the most diverse breeding bird

community on the continent, and the boreal forest on the lakeshore and many islands provides nesting habitat for neotropical migrating birds.

Protecting Burntside's shoreline also helps protect the drinking water supply for the city of Ely, which draws its water from Burntside.

So, whether it's the beauty of the northland, the rich fish and wildlife habitat of the boreal landscape, or the people of Ely and those who visit, the public benefits of our work on Burntside will pay dividends for generations.

Everyone needs clean water:

TROUT STREAMS:

WHAT DO BROOK TROUT AND CANARIES HAVE TO DO WITH CONSERVATION?

Part of the romance of Minnesota's outdoor legacy resides in the image of casting a hand-tied fly into a cold, deep pool and watching as a dappled brook trout attacks the fly. Trout fishing has been a part of the family narrative for generations of Minnesotans.

Today, the Minnesota Land Trust works to preserve this legacy by protecting the streams where trout thrive.

Our fabled streams of the North Shore, Metro or Southeast are not only important for these important fish species; trout streams are like the proverbial canary in the coal mine for the health of an entire watershed. A scientist will tell you that trout streams are highly responsive to land use changes that negatively impact the environment like deforestation or urbanization. And any angler can tell you that when a stream is warm or filled with sediment, trout cannot survive.

Why? Let's start by thinking about the anatomy of a healthy trout stream: cool temperatures, high oxygen content, good pebbly surfaces, abundant insects and clear water. Left alone in a natural state, these aquatic systems find balance and trout thrive.

However, none of Minnesota's trout streams escape the impact of human land use, so we need to step in and give trout streams a boost. The upland forests need to be protected or restored so the soils stay in place and water temperatures stay cool. The shoreline needs to be protected or restored so there's a natural buffer to the stream. And the watershed's storm water runoff that comes from agriculture, industrial or commercial development must be dealt with before entering the streams.

Even if we don't fish, trout streams are important to us all: their water is our water. Higher temperatures, tons of sediment and runoff from roads, farm fields and other developments, pollution of all types impact the quality of the water we drink.

The trout are small and their environment is fragile. The impacts can be seen more clearly and quickly, providing an unmistakable warning signal that calls us to act.

By protecting natural shoreline and, just as importantly, the forested uplands, we can lessen the effects of temperature changes, keep soil on the land, and reduce the nitrogen load in the water.

So, if your summer travels take you near one of Minnesota's treasured trout streams, you can be assured the Minnesota Land Trust and others are working hard to maintain the healthy viability of our state's lakes, streams and rivers, and the quality of the water within them.

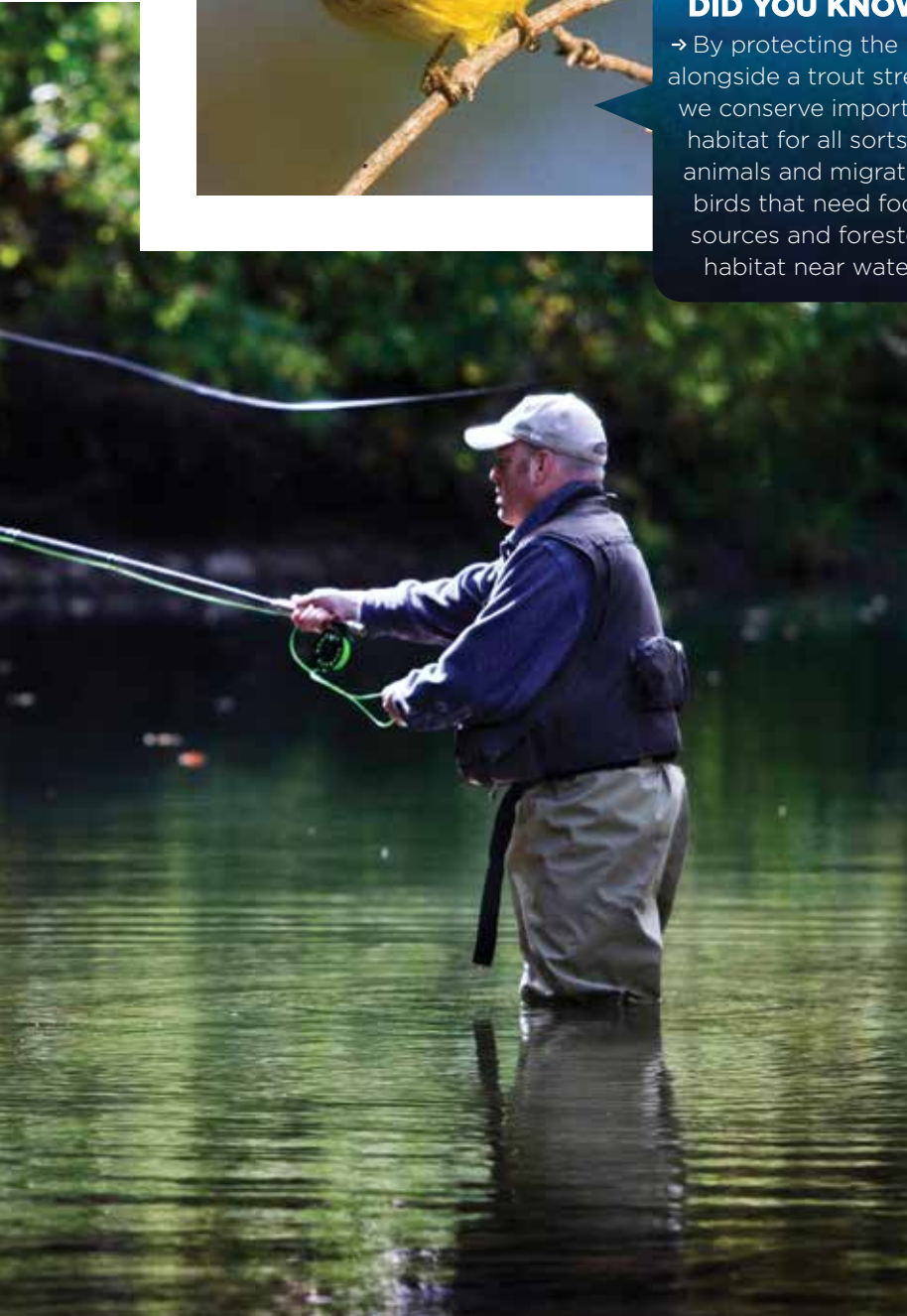


WE HAVE PERMANENTLY CONSERVED MORE THAN 26 MI
33 PROJECTS THAT PROTECT TROUT STREAMS, IN



DID YOU KNOW?

→ By protecting the land alongside a trout stream, we conserve important habitat for all sorts of animals and migrating birds that need food sources and forested habitat near water.



**REGULATIONS OF SHORELINE ON DESIGNATED TROUT STREAMS INCLUDING
INCLUDING THE UPLAND FORESTS AND IMPORTANT BUFFERS.**

TWICE AS NICE

Just last summer, Sharon Dockstader was able to make a dream come true. The St. Croix valley forests where she played as a child are now permanently protected with a conservation easement held by the Minnesota Land Trust.

This land is located in the Saint Croix Bluffs Important Bird Area, which was designated of global significance by the Audubon Society because of its location in a crucial migratory flyway.

The Minnesota Land Trust has protected more than 7,000 acres in 92 sites in the St. Croix River watershed.

Sharon very generously donated the value of the conservation easement, which helps extend our ability to do even more land conservation work. Other costs were funded by the Outdoor Heritage Fund, as well as Tropical Wings, a St. Croix Valley-based non-profit that helps fund habitat conservation for neo-tropical songbirds.

And now, Sharon has made plans to convey her land to the Minnesota Land Trust upon her death. Having a conservation easement means that the land will always be preserved as it is today, regardless of ownership, long into the future.

If you're interested in making a gift of land, stock, IRA withdrawal or other similar gift, please give Barbara LaMotte a call at 651-917-6289.



ISLAND LAKE:

PROTECTING PRECIOUS WETLANDS

If you're looking for an overnight sensation, conservation is probably not your thing. In contrast to today's "24-7" instant-gratification world, nature's slow pace rewards those who are patient, yet persistent.

This story is about a project that has been in the works almost as long as the Land Trust has been in existence, and which we were thrilled to complete this year.

Let's start with its location, near the popular Whitefish Chain of Lakes and less than two miles from Crow Wing and Lake Emily State Parks. This part of the state has lost upwards of 25% of its forest, grasslands and wetlands to agricultural and residential uses.

Now let's talk about its significance: the size of the project (roughly 500 acres) and its more than five miles of shoreline would be worthy of protection alone.

But this land is like an "everything" pizza – it's loaded with ten different wetland communities, including fens, ash swamp and sedge meadow.

Another nearby Land Trust project protects another 54 acres and 2,700 feet of shoreline.

Some things

It's also the story of the incredible determination of the landowner and her family. Arlene Flemmer and her late husband Lonny were unassuming conservationists who purchased hundreds of acres of land over the span of several decades. After Lonny passed away, Arlene vowed to fulfill his dream of seeing this outstanding property permanently protected.

And so, twenty-one years ago, Arlene began the process of securing a conservation easement.

Finally, this story is a reminder about how fortunate we are in Minnesota to have the Outdoor Heritage Fund that made it possible to complete this project.

"Arlene was a volunteer when I first came to the Land Trust in 1998 and I can't tell you how thrilled I am to complete this essential project," said executive director Kris Larson. "We had to overcome some technical barriers to get it done, but Arlene's tenacity and staff's diligence pushed it over the top.

"Not only is private land like this essential to protect due to its amazing biodiversity, but because it's located in the headwaters of the Mississippi, it helps keep the river clean before it begins its journey south."

In short, it was well worth the wait.



really are worth the wait.

PRESERVING WETLANDS LIKE THOSE FOUND ON ARLENE FLEMMER'S LAND IS ESPECIALLY IMPORTANT BECAUSE IN THE LAST 10 YEARS, THE UPPER MISSISSIPPI WATERSHED HAS LOST APPROXIMATELY 400 SQUARE MILES OF LAND TO DEVELOPMENT AND ROW CROPS. WETLANDS PROVIDE BIODIVERSITY, WHICH MAKES THE LAND MORE RESILIENT. HEAVY RAINS AND MELTING SNOWS WON'T RUN OFF THE LAND AS FAST. AND WETLANDS HELP KEEP CARBON OUT OF THE ATMOSPHERE.





MINNESOTA LAND TRUST

Kris Larson | Executive Director
Pat Anderson | Program Manager
Nick Bancks | Program Manager
Pat Collins | Program Manager
Barbara Farrell | Staff Paralegal
Kristina Geiger | Program Manager
Hansi Johnson | Director of Recreation Lands
Barbara LaMotte | Director of Development & Communications
Sue Martínez | Administrative Associate
Susan McCallum | Finance Manager
Andrew Moe | Stewardship Associate
Wayne Ostlie | Director of Land Protection
Vanessa Perry | Program Manager
Daryl Peterson | Director of Restoration Programs
Ned Phillips | Conservation Associate
Ann Thies | Director of Conservation Stewardship
Gena Setzer | Staff Attorney
Beth Westerback | Development Manager

BOARD OF DIRECTORS

Robert Bush
Tim Edman
Nichlas Emmons
Ted Erickson
Brad Fuller
Loren Hansen | Vice-Chair
Jeff Hayward
Susan Heegaard
Patrick Hynes | Secretary
Wood Kidner | Treasurer
David Knoblauch
Carolyn Kohrs
Alexis Ludwig-Vogen
Jim Payne
William Rahr
Kelly Scanlan
Fay Simer
Jim Stark
Susan Steinwall | Chair
Brad Wallin | Vice-Chair

MINNESOTA LAND TRUST

www.mnland.org

651-647-9590 | Toll Free: 1-877-MLT-LAND

394 South Lake Avenue
Suite 404
Duluth, MN 55802

2356 University Avenue West
Suite 240
St. Paul, MN 55114

EMAIL US AT: MNLAND@MNLAND.ORG



DESIGN BY BARBARA PEDERSON
SPECIAL THANKS TO
DONALD J. OLSON FOR HIS
GENEROUS GIFT OF PHOTOGRAPHY
ON THE COVER OF THIS REPORT.
OTHER PHOTOGRAPHY THANKS TO
REBECCA FIELD, HANSI JOHNSON,
JOHN PENNOYER, STEVEN DOUGLAS
SMITH, AND LAND TRUST STAFF.