



MINNESOTA LAND TRUST | 2014 ANNUAL REPORT





OUR PLAN FOR THE FUTURE

MORE THAN ONE hundred years ago, Gayle Goetzman's family settled on a farm in a picturesque valley near Winona. Throughout all the decades of change—from Model T's and world wars to cell towers and the internet—the Goetzman farm has remained a constant. Just this year, the Goetzman property was officially recognized as a "Century Family Farm," a very unique honor in Minnesota. Knowing the family's commitment to their sense of place and family's legacy, it is no surprise that several years ago the Goetzmans protected their land forever through a conservation easement with the Minnesota Land Trust.

From our beginning in 1991, the Minnesota Land Trust has embraced its roots of nurturing and preserving the best places in our state like the Goetzman Farm with innovation, integrity, quality and permanence. Our

members, board, landowners, volunteers and staff all take very seriously the responsibility and gravity of *permanent* land protection.

And now, because of shifting demographics and economic changes, we are filled with a sense of urgency to increase our pace. Because for every family like the Goetzmans who are committed to their roots, there are thousands of landowners who are making decisions right now about the fate of their properties.

Thanks to our newly adopted strategic plan, the Minnesota Land Trust is poised to seize this opportunity to accelerate our work over the coming years. With your help, we can protect and restore Minnesota's very best places, and engage people in the land as never before. Here's a snapshot of the need for our work and what we hope to accomplish:

PROTECT

Consider this:

- Over the coming decades, Minnesota's population is expected to increase by 20%. With the recession over, real estate development is now starting to rebound.
- Nearly 800,000 acres of Minnesota's grasslands – which contribute greatly to wildlife habitat and water quality – are expected to convert to cropland in the next few years.
- Shoreline development is once again increasing, causing a 66% reduction in vegetation around our lakes, reducing fish habitat and degrading water quality.

Direct land protection will always remain core to the Land Trust's business, and last year was one of our most productive ever. Today, the Minnesota Land Trust holds 98% of the conservation easements held by non-profits in the state, which carries with it a responsibility for productive leadership and accountability. Therefore:



TO TAKE ADVANTAGE OF THIS WINDOW IN TIME, WE WILL DOUBLE THE PACE OF LAND PROTECTION SO THAT IN TEN YEARS AT LEAST 2 MILLION FEET OF SHORELINE AND 100,000 ACRES OF THE STATE'S BEST NATURAL HABITATS WILL BE PROTECTED.

RESTORE

At the same time, we continue to recognize the need for restoration throughout the state.

- Less than 1% of native prairie remains. We need to restore Minnesota's prairies and working grasslands for wildlife habitat and clean water.
- Wetland loss is particularly severe in the western prairie-pothole region of the state, where over 90% of wetlands are gone. This loss impacts water quality, increases flooding, and diminishes important wildlife habitat.

The Minnesota Land Trust is in the midst of helping to lead our state's largest restoration project – the St. Louis River Estuary Restoration Initiative – which will ultimately bring 1,400 acres of aquatic habitat and recreation opportunities back to life after years of degradation and industrial pollution.

Now we are ready to put our professional experiences and technical resources to work in other parts of the state, as many of our 500 landowners are looking to the Land Trust to help improve the health of their properties.



IN ORDER TO HELP RECOVER SOME OF MINNESOTA'S MOST IMPORTANT HABITATS, WE INTEND TO COMPLETE MORE THAN 1,000 ACRES OF STRATEGIC AND ENDURING RESTORATION WORK IN THE NEXT TEN YEARS.

ENGAGE

And yet there is more to be done:

- The average American child spends 44 hours a week with electronic media and a fraction of that in the outdoors, contributing to the national obesity epidemic and other health concerns.
- Fortunately, the Outdoor Foundation found that young people with nearby walking and biking trails are far more likely to get outside and exercise.

The Land Trust recognizes that all our conservation investments today will rely on the conservation *leaders* of tomorrow. And we also recognize that it's difficult to create and foster a conservation ethic in the next generation if that generation hasn't have meaningful experiences in the great outdoors.

Towards that end, the Minnesota Land Trust has embarked on a new program in partnership with the City of Duluth to improve trail access and other outdoor recreation opportunities, helping Duluth to become one of the country's great outdoor destinations and create an unparalleled quality of life for its residents.



OVER THE NEXT TEN YEARS, WE WILL USE THIS PUBLIC/PRIVATE PARTNERSHIP AS A MODEL FOR WORKING WITH OTHER COMMUNITIES THROUGHOUT THE STATE WHICH ASPIRE TO CREATE MEANINGFUL, NATURE BASED EXPERIENCES FOR THEIR YOUTH AND FAMILIES.

The next decade represents what we believe will be a watershed moment for the health of our state and our communities. It will also be a pivotal time for the Minnesota Land Trust as we will need to grow to meet the changing landscape of our future.

Like the Goetzman family, we see ourselves not in the brief span of time that we spend on this earth, but as part of the land that will endure long after we are gone.

Because we are privileged to work with dozens of families like the Goetzmans who are all committed to leaving a lasting legacy for future generations, the urgency of this critical time in the life of the Minnesota Land Trust becomes clear. We want you to know that we are ready to put our shoulder down and do the hard work it will take to get our treasured places protected and restored while we still can.

But most of all, your continued passion, commitment and counsel are what will make Minnesota a truly exceptional place for all of us, and for future generations.

In gratitude for all you do,

Kris Larson
Executive Director





THE ST. LOUIS RIVER flows 179 miles through a 3,634 square mile watershed into Duluth Harbor. It forms one of the largest freshwater estuaries in the world, and is important habitat for fish, wildlife and waterfowl. Over 230 species of birds depend on the estuary for a stopover place during migration.

However, it is currently listed by the Environmental Protection Agency (EPA) as an Area of Concern due to its industrial history which destroyed fish and wildlife habitat and deeply polluted waters by unregulated chemical dumping, untreated sewage releases and other physical disturbances in the last century.

But now, the St. Louis River Estuary is on the verge of a dramatic transformation. An ambitious restoration program will repair the river's ecology and provide an attractive destination for recreational users from all over the region.

Several specific areas have been identified for clean-up and at one site, restoration is nearly complete.



A SEDIMENT CURTAIN, PICTURED HERE, PREVENTS MUDDY WATER STIRRED UP BY THE DREDGING OPERATIONS FROM FLOWING INTO THE RIVER. AT THE SAME TIME, THE CURTAIN KEEPS FISH AND OTHER AQUATIC CREATURES SAFE FROM CONSTRUCTION ACTIVITY.



ST. LOUIS RIVER ESTUARY

RADIO TOWER BAY

Over a century ago, Radio Tower Bay was the site of a lumber operation which dumped tons of wood scraps and waste material directly into the water. The accumulated wood waste, in some places over 6 feet deep, created a sterile environment that was essentially a desert for fish and other creatures.

Working with the Minnesota Department of Natural Resources and contractors, Minnesota Land Trust completed restoration designs, engineering specifications, environmental reviews and permits needed for the project. A contractor was selected to complete the dredging work on the 29-acre site.

Approximately 115,000 cubic yards of dredged material was ground up and pumped to a location where the wood debris will be prepared for re-use as biofuel, compost and other uses. The entire project, which began two years ago with the removal of wood pilings, will be completed by late November.

Natural re-vegetation next spring will result in a riverbed that's ideal for fish and other creatures to spawn and raise their young, and water depths that will be much more amenable for fishing and other recreational uses.



GRASSY POINT

Minnesota Land Trust is working with partners on restoration plans for a project that's very similar to Radio Tower Bay but on a larger scale. In this case, sawmill waste covers a depth of up to 16 feet and the 140-acre site will yield approximately 300,000 cubic yards of waste wood material.

Currently, sheltered zones are missing throughout the St. Louis River Estuary – nice fringe areas of vegetation that act as a food source but also habitat for birds, fish, frogs and turtles.

At Grassy Point, excavated material will again be removed and re-used, but some is expected to be re-purposed to create a land feature that, by protecting the interior part of the bay from wave action, will result in a very effective nursery area for walleye and sturgeon.

The environmental review process is underway, evaluating how fish, water, and air quality resources will be affected, and developing practices to avoid or minimize risk to those resources. Excavation work is expected to begin in the spring of 2016.

CHAMBERS GROVE

Sometime during the 1950's or 60's a sheet pile wall was erected that was intended to stabilize the river bank. However, this steel curtain disconnected people from the river.

More recently, Minnesota DNR fish biologists have determined that Chambers Grove is an ideal site to provide spawning habitat for sturgeon and walleye.

By removing the sheet piling and restoring the natural shoreline, a much more attractive and usable public access site will be created. It will also replace former spawning sites that have been cut off to Lake Superior access because of the Fond du Lac dam.

Design, environmental review and permitting will be done by the spring of 2015, with the goal of initiating construction in mid-summer.

When completed, people will have much improved recreational access to the river, and fish will be able to utilize the spawning areas.



2,000 CUBIC YARDS OF WASTE MATERIAL WAS DREDGED PER DAY.

“THE ST. LOUIS RIVER ESTUARY CORRIDOR IS A PERFECT CASE STUDY ON HOW A COMMUNITY CAN SUCCESSFULLY WEAVE TOGETHER RESIDENTIAL, INDUSTRIAL, RECREATIONAL AND ENVIRONMENTAL CONSIDERATIONS.”

— DON NESS, STATE OF THE CITY ADDRESS, MARCH 2014

AN OVERVIEW OF LAND PROTECTION

THE FOLLOWING NEW PROJECTS WERE COMPLETED IN FISCAL YEAR 2014, THANKS TO THE GENEROSITY OF OUR MEMBERS WHO CONTRIBUTED FINANCIALLY, AND BY LANDOWNERS WHO CARE ABOUT A LEGACY OF LAND PROTECTION IN MINNESOTA.



ARCOLA BLUFFS - WASHINGTON COUNTY

NERSTRAND BIG WOODS - RICE COUNTY

This 158-acre property protects oak savanna and grasslands that are key habitats for species in greatest conservation need including the short-eared owl and the eastern fox snake. The landowner, who has completed two prior easements, planted a grove of oak and walnut trees and has plans to eventually restore the wetland at the fork of two streams along the southern boundary.

ARCOLA BLUFFS ON THE ST. CROIX - WASHINGTON COUNTY

Native prairie protected on this 36-acre property will help maintain water quality in the St. Croix River area, the premier mussel watershed in the Upper Mississippi River. These places are home to many Midwestern species such as the cougar, bald eagle, peregrine falcon, and Karner blue butterfly, which are currently or were recently included on the federal list of threatened and endangered species.



JOHN PENNOYER



THE FOLLOWING PROJECTS WERE FUNDED BY LAND TRUST MEMBERS AND WITH THE GENEROUS SUPPORT OF THE MINNESOTA ENVIRONMENT AND NATURAL RESOURCES TRUST FUND AS RECOMMENDED BY THE LEGISLATIVE-CITIZEN COMMISSION ON MINNESOTA RESOURCES (LCCMR).



SUNRISE LAKE - CHISAGO COUNTY

FISCHER LAKES - BECKER COUNTY

Three generations of one family have protected their 475-acre Century Farm, located in a very important migratory area for forest birds and waterfowl. Wildlife species documented on the property include several species of greatest conservation need: trumpeter swan, prairie chicken, sandhill crane, great blue heron, bald eagle, sharp-tailed grouse, and upland sandpiper. Over 18,000 feet of shoreline along five lakes, as well as remnant oak savannah, prairie and forest located adjacent to the city of Frazee are protected forever.

SUNRISE LAKE - CHISAGO COUNTY

The forests, grasslands and wetlands on this 79-acre property provide habitat for a variety of species in greatest conservation need, including the wood turtle, trumpeter swan and spotted salamander.



TENNYSON LAKE - ISANTI COUNTY

BLACK LAKE - BELTRAMI COUNTY

This 145-acre property consisting of forest, wetlands, and grasslands also includes over 10,000 feet of shoreline. The mosaic of forest, wetlands and grasslands support bald eagles, northern goshawks, great gray owls, red-shouldered hawks, black-backed woodpeckers, gray wolves, loons, and other species of greatest conservation need.

TENNYSON LAKE - ISANTI COUNTY

Over 4,300 feet of sensitive shoreline are protected on this 158-acre property. Rare habitats including sedge meadow, tamarack swamp, and cattail marsh are found on the property. The land provides significant habitat for species in greatest conservation need, supporting such species as sandhill crane, tundra swan, trumpeter swan, bald eagle, Nelson's sharp-tailed sparrow, pileated woodpecker, red-headed woodpecker, black bear, and smooth green snake.



THE FOLLOWING PROJECTS WERE FUNDED BY LAND TRUST MEMBERS AND BY MINNESOTA'S OUTDOOR HERITAGE FUND AS RECOMMENDED BY THE LESSARD-SAMS OUTDOOR HERITAGE COUNCIL (LSOHC).



KNIFE RIVER - LAKE COUNTY



PINE RIVER - CASS COUNTY

AN OVERVIEW OF LAND PROTECTION



CHALBERG CREEK - ST. LOUIS COUNTY

KNIFE RIVER - LAKE COUNTY

This conservation easement protects 2,424 feet of shoreline along the Knife River, a designated trout stream, as well as a tributary and a pond by limiting development of the tract and other uses that could negatively impact the water quality and integrity of the forest community.

CHALBERG CREEK - ST. LOUIS COUNTY

This 159-acre property consists of a mix of upland hardwood forest, lowland coniferous forest, wetlands, grasslands, and beaver ponds with approximately 1,770 feet of shoreline along Chalberg Creek, a DNR-designated trout stream, and a tributary of the Cloquet River. The property provides scenic views of the rolling, wooded landscape from Highway 8.

WHITEFISH CHAIN OF LAKES - CROW WING COUNTY

This 25-acre conservation easement completes a gap between an existing Whitefish Chain of Lakes easement to the north and the Uppgaard Wildlife Management Area to the south, creating a 175-acre protected area. This land also includes over 500 feet of undeveloped shoreline on Lower Whitefish Lake. Large ponds with approximately 3,500 linear feet of shoreline provide nesting habitat for diving ducks. The wooded and natural character of the property provides scenic views visible from Silver Peak Road and Lower Whitefish Lake.

PINE RIVER - CASS COUNTY

Significant habitat for a full array of plants and wildlife, including several species in greatest conservation need, is protected by this 160-acre easement. Black bear, bobcat, bald eagle, beaver, wild turkey, sand hill crane, great horned owl, grouse, white tail deer, common tern, yellow rail, red-necked grebe, trumpeter swan, common loon, least darter, eastern hognose snake, and lady slipper will benefit from protection. A mile and a half of shoreline is also preserved forever.

ONE LAKE - CASS COUNTY

A mix of forest types, wetlands, grassland and open water on this 42-acre property provides habitat for a variety of wildlife species in greatest conservation need including sharp-tailed grouse, common loon, red-necked grebes, least darter, and eastern hognose snake. The undeveloped and wooded shoreline provides foraging habitat for osprey and bald eagles.

SHERBURNE HARDWOODS - SHERBURNE COUNTY

This 80-acre conservation easement protects deciduous forest, grassland, and wetland, providing habitat for a variety of species in greatest conservation need including bald eagles, American woodcocks, gray wolves, and whip-poor-wills. The property borders the Sherburne National Wildlife Refuge, and it's close to the Santiago Wildlife Management Area.



FITZ FITZGERALD



OTTER LAKE - OTTER TAIL COUNTY

MILLE LACS LAKE - MILLE LACS COUNTY

The natural and undeveloped shoreline on Mille Lacs Lake, recognized by the Minnesota Department of Natural Resources as providing exceptional off-shore muskie spawning habitat, has been protected forever. The 52-acre land supports a large array of wildlife species including bald eagle, osprey, yellow rail, trumpeter swan, sharp-tailed sparrow, muskellunge, wood turtle, and four-toed and spotted salamander. The property is located less than ½ mile southwest of Father Hennepin State Park, which is recognized as one of the most important areas for species of greatest conservation need in the Mille Lacs Uplands Ecological Subsection.



BEAR LAKE - CARLTON COUNTY

A mosaic of habitat on this 97-acre property supports bobcat, fisher, black bear, bald eagles, common loons, forest-dwelling salamanders, and other species of greatest conservation need. Over 2,300 feet of natural shoreline along Bear Lake, classified by the Minnesota Department of Natural Resources as a Natural Environment Lake, is also preserved.

MOOSE LAKE - PINE AND CARLTON COUNTIES

Final easements that collectively add up to nearly 700 acres of hardwood forest, black spruce, northern wet ash and swamp, tamarack bog, open water ponds and grasslands have been completed. This natural area supports a large array of wildlife species, including black bear, sandhill crane, sharp tailed sparrow, Cape May warbler, two-spotted skipper, northern cricket frog, wood turtle, and eastern hognose snake.

LITTLE CROW LAKE - OTTER TAIL COUNTY

This 115-acre property consists of a mixed hardwood forest, broadleaf sedge wetlands, open grasslands, agricultural lands, and an open water pond with approximately 2,422 feet of shoreline along an intermittent stream, 1,300 feet of shoreline along a perennial stream and 1,309 feet of shoreline along a pond connecting with Little Crow Lake. The broadleaf sedge wetland, red oak forest, and aspen-oak forest on the Protected Property have been mapped and identified by the DNR as key habitats for a variety of species in greatest conservation need, including the northern pintail and the bobolink.



MOOSE LAKE - PINE AND CARLTON COUNTIES



MINNESOTA LAND TRUST



“STUDY NATURE, LOVE NATURE,
STAY CLOSE TO NATURE.
IT WILL NEVER FAIL YOU.”

— FRANK LLOYD WRIGHT



VOLUNTEERS

MINNESOTA LAND TRUST takes a unique approach to its use of volunteers for conservation easement monitoring.

By using trained and certified volunteers – many of whom have devoted time to monitor Minnesota Land Trust easements since the 1990’s – our organization is able to accomplish two critical goals.

First, we are committed to visiting each and every easement on an annual basis. Typically during that visit, the monitor walks the property with the landowner and takes photos and otherwise documents any changes that have occurred on that property over the past year.

This allows us to maintain a means of direct communication with our nearly 500 landowners that would otherwise be next to impossible.

Our second goal is to minimize violations, when something occurs on the property that runs counter to the objective of the conservation easement.

Remember, conservation easements are legal agreements that are binding on all future owners of the property. Our experience tells us that consistent communication with our landowners goes a long ways towards preventing violations down the road.

Our best guess is that volunteers save thousands of dollars per year that would otherwise have to be spent on staff time. Without our highly dedicated team of expert volunteer monitors, we would not accomplish the volume of land protection that we’re currently able to achieve.

Thank you, volunteers!

2014 VOLUNTEERS

Jessica Abernathy
Donna Abramson
Allan and Ginna Portman Amis
Patrick Anderson
Todd Armbruster
Robert P Axtmann
John Baird
Polly Bayrd
Tom and Ann Beaver
Eric S. Bell
Nancy L. Berlin
Brad Bourgeois
Susan Boyd
Matt Bredesen
Kirk and Julee Bremer
Dorothy Slegman and James Brewer
Michael Burnett
David Burritt
Thomas Clapp
Jace Crowe

Steve C DeLapp
Ross Dudzik
Timothy J. Edman
Pam Endean
Jody Elmasry
Erik Erikstrup
Bill Fahrney
Fitz and Heather Fitzgerald
Jenna Fletcher
Nona Goertz
Sean Gokey
Edward and Eileen Gordon
Martha Greiner
David E. Grunzke
Gary Gustafson
David Hagen
Kendall W. Hains
Thomas and Marcie Hamel
John and Jean Hedberg
Carter and Florence Hedeon
Cory Hertog

Thomas and Beatrice Hoffmann
Gregory Hoidahl
Alison Hruby
Jordan Jensen
Ron Jirsa
Pamela Joachim
Clifford Johnson
Brian Jungels
Shelly Kafka
Nona Goertz
William S Kalseim
Wood Kidner
Deirdre Flesche and Dag Knudsen
Dennis Koenig
Gene Kremer and Karen Dingle
Judy Krish
Ryan and Jenny Kutter
Betsy Lake
Pam and Roger Landers
Linda and Al Larson
Steve Lee

Richard and Vickie Lemanczykafka
Huizhen Li
Linda Liestman
Brad Fuller
Bonnie Maffitt
Bill Majewski
Maria Maldonado
Norma Malinowski
Catherine Marquardt
Peter Martin
Laura Matson
Diane McGann
Bryan McGinnis
Joan Meierotto
Hamlin Metzger
Clint Miller
Ran Miner
Dennis and Bonita Morris
Rick Musser
Terri Nelson
Mary Newstrom
Karen Oberhauser
James Odden

Anthony Morley and Ruth Anne Olson
David Palmquist
Cheryl Paullin
John and Linda Peck
Bret Pence
Ed Rasmussen
Deena and Steve Reisman
William Risse
William and Lynne Rogers
Joe Rokala
Charles L Rose
Kelly Scanlan
Robert Scheierl
Hank J Scheinost
Bruce Schoenberg
Lee Scholder
Teresa Thews and Paul Scobie
Charles and Betty Selander
John Shardlow
Brad Shinkle
Steven Sicheneder
Greg Solberg

William Steele
Alena Stewart
Terry Stewart
Bobby Stoffel
Libby Stone
Bill Sullivan
Joseph Taatjes
Gery A Then
Ann C Thies
Herm Urbasic
Mark van der Linden
Jim Vonasek
Mark Wendt
David White
Dennis Scherber
Guy Williams
Dan Wilm
Ruthann Yaeger
Dunn Yoshitani

The Minnesota Land Trust is committed to strong fiscal health and socially responsible investments. The financial summary that follows is based on the complete financial audit which was conducted by Redpath and Company, Ltd. Their full report is available online at www.mnland.org or by contacting the Land Trust at 651-647-9590.

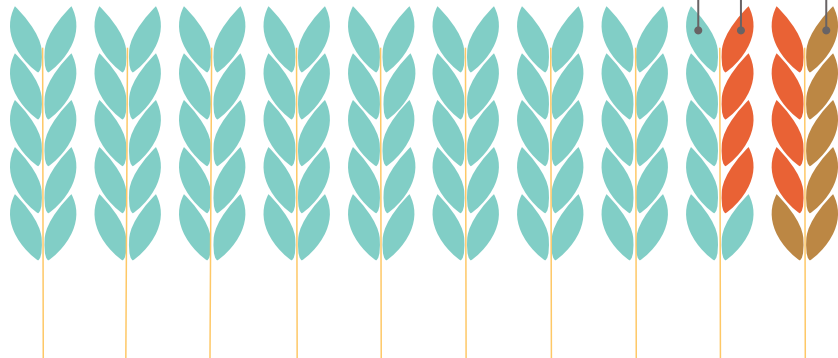
FINANCIAL SUMMARY

BALANCE SHEET FOR THE FISCAL YEAR ENDING JUNE 30, 2014

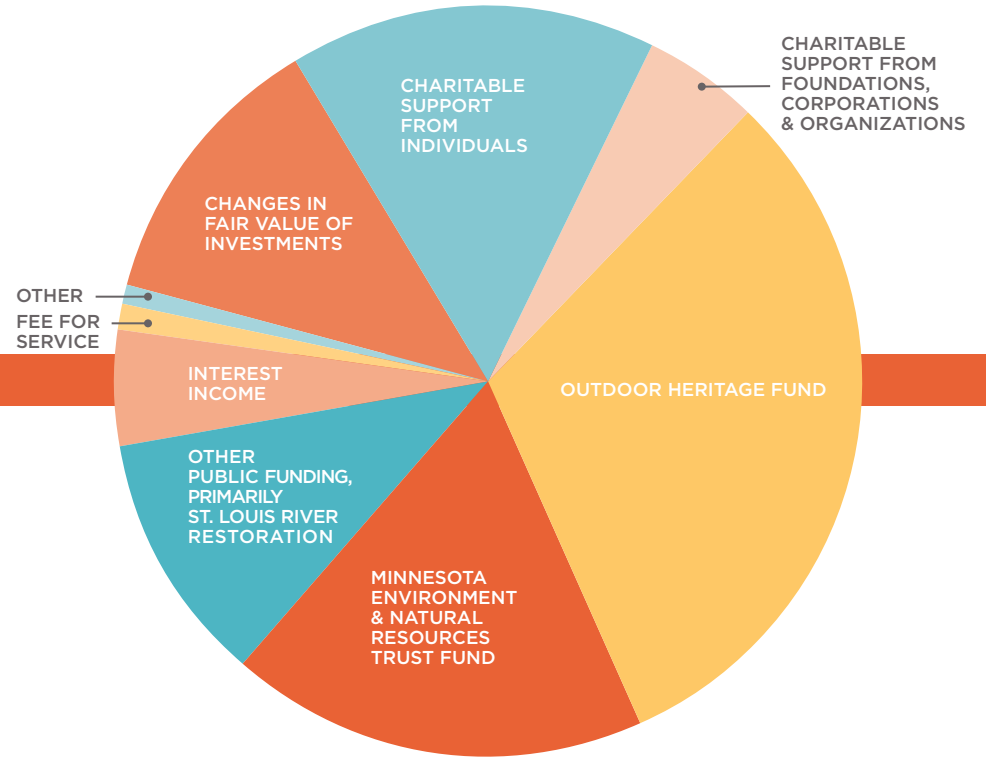
Assets	2014	2013
Cash & Cash Equivalents	\$4,719,126	\$4,208,089
Net Furniture & Equipment	\$1,867	\$5,600
Land Held for Resale/Conservation	\$9,000	\$9,000
Total Assets	\$4,729,993	\$4,222,689
Liabilities & Net Assets		
Accrued Payables	\$88,907	\$80,050
Total Net Assets	\$4,641,086	\$4,142,639
Total Liabilities & Net Assets	\$4,729,993	\$4,222,689

EXPENSE ALLOCATION

Program	\$2,021,999	86%
Fundraising	\$195,883	8%
Management	\$120,187	6%
Total expenses	\$2,338,069	



FUNDRAISING & REVENUE



FUNDRAISING & REVENUE

Charitable support from individuals:	\$439,155
Charitable support from foundations, corporations & organizations:	\$141,580
Outdoor Heritage Fund:	\$883,185
Minnesota Environment & Natural Resources Trust Fund:	\$521,344
Other public funding, primarily St. Louis River Restoration:	\$318,514
Interest income:	\$148,493
Fee for service:	\$28,900
Other:	\$1,959
Changes in fair value of investments:	\$353,386
Total support & revenue	\$2,836,516

DONORS FROM JULY 1, 2013 - JUNE 30, 2014

ANNUAL GIFTS

Gifts that support operations, special projects and long-term stewardship of protected lands.

\$1,000 and above

Paul Markwardt and Richard Allendorf
Howard and Camilla Robert Alton
Allan and Ginna Portman Amis
Eric S Anderson and Janalee Aurelia
Kurt Apfelbacher
Prospect Creek Foundation, a family foundation of Bruce and Martha Atwater
John Baird
Mita Bell
Elizabeth N. Brombach
Carroll Brooks through the Greystone Foundation
Colleen Carey and Pam Endean
Austen S. Cargill
Gary R. Carlson and Ms. Jane Howard
Claire Olson and William Davidson
Edward and Sherry Ann Dayton
Toby and Mae Dayton
David Hartwell and Elizabeth DeBaut
Steve C. DeLapp
Valerie Doherty
EcoTrust

Timothy J. Edman
Paul M Egeland
Dave and Renee Ethier
Benjamin and Rebecca Field
David C. and Claire B. Forsberg
Roger Frick
Brad Fuller and Libby Lincoln
Elizabeth N. Furber
John and Martha Gabbert
Gayle B. Goetzman
Wolfgang and Martha Greiner
David and June Guckenberger
Chuck Malkerson and Carolyn Hall II
Lucy B. Hartwell
Linda and Ed Hendrickson
Patrick Hynes
Jill Conda and Mark Jacobson
Charles R. Johnson
Brian Jungels
Wood Kidner and Sue Funk
Doug and Carolyn Kohrs
Kris and Christine Larson
Nivin MacMillan
Bob and Siri Marshall
James Mayer and Rochelle Gunn
Dick and Debby McNeil
Tom and Martha Meyer
Charles and Melinda Moos
Elaine Rees and Gerald Morsello
Heather Muster

Donald H. Nelson
William and Markell Rahr
John A. Roxbury
Jack and Pam Safar
Sandy Hills Fund of the St. Croix Foundation
Jean M. Schubert
John and Marilyn Shardlow
Ellen Herman and Chris Shelton
Craig and Mariana Shulstad
Dean V. Skallman
Wendy J. Sommer
Julie and Bruce Steiner
Sue D. Steinwall
Nancy Gibson and Ron Sternal
David Anderson and Eileen Stombaugh
Brad and Cindy Wallin
Graden and Rebecca West
Mary Shedd and Steven Wilson
Susan and Steve Wilson
Steve and Beverly Wolf
Angus and Margaret Wurtele
Ronald and Dianne Yanish through the Yanish Family Donor Advised Fund of the Rochester Area Foundation
Dunn and Laura Yoshitani
Cindy Zitzmann

\$500 - 999

Peggy and Paul Adelman
Robert Albright
Paul G Anderson

Caroline M. Anderson
Jon and Metta Belisle
Donor Advised Endowment of the St. Croix Valley Foundation
Michael Walstrom and Kerrienne Blevins
Suzanne C. Blue
Robert E. Bowen
Dave and Ann Bucheck
Fund of The Saint Paul Foundation
Robert D. Bush
Michael Christie
Meg Cowden
Joan L. Dayton
Terrence C. Demos
Joan R. Duddingston
Susan Eckstrom
Mark and Kim Evans
Barb Farrell
Loren and Whitney Hansen
Susan Heegaard and Gary Findell
Richard and Carol Flint
Bill and Janet Flynn
Flavia Franta
Patti and Bob Gartland
John M. Gilbert
Wilfred and Justine Gould
Jane Harper and John Velin
John and Jean Hedberg
James and Ann Howard
Nancy Kafka
Randy Lake and Colleen Keough
Scott and Mary W. Lagaard
Ross and Bridget Levin
Harriet Ludwick

Dean and Danielle Mathews
Hamlin Metzger
James and Franchelle Mullin
Fund of the Catholic Community Foundation
Gary E. Nichols
James and Judy O'Reilly
Cheryl Paullin
Russ and Kathy Rhode
J. Timothy Ritchie
William and Lynne Rogers
Phillip and Jane Rollins
Eugene Rondeau
Douglas Sandstad
Kelly Scanlan
Adam Schwartz-Lowe
Teresa Thews and Paul Scobie
Gena and Steve Setzer
Robert Sivertsen, through the Charles A. Weyerhaeuser Memorial Foundation
Sarah and Jon Strommen
Joanne Von Blon
David K. Whitney
Kristin Siegesmund and Suzann Willhite
Richard M. Williams
Timothy and Mary Wilson
Steve Smith and Deborah Zvosec

\$250 - 499

Gretchen and Robert Amis
Kirsten Erickson and Patrick Anderson
Michael Lindsey and Judee Arnstein
Joseph and Michael Bailey

Tom and Ann Beaver
Patricia M. Bellace
Joyce Bish
Dan Michaels and Michelle Blenkush
Carla A. Blumberg
Jeff Broberg
William Blum and Susan Brown
Bob Bruce
Elaine and Foster Cole
Page and Jay Cowles
Charles W. Crosby
Dave and Di Dawkins
Bruce and Judith Derauf
George and Lynn Devins
Jane Prohaska and William Donohue
David and Olive Dornfeld
Elwell Miller Fund
Charles and Anne Ferrell
Fitz and Heather Fitzgerald
Rodney and Susan Foss
John and Sue Foster
David Fransen
Marna W. Fullerton
Jim Dorsey and Dee Gaeddert
T. Lynn Gannon
John C. Goetz
Richard and Susan Goldman
Hazen Graves
Curt and Pat Hadland
David Hagquist
Thomas and Marcie Hamel
Elizabeth and William G. Heegaard Family Fund of The Minneapolis Foundation



“NEVER DOUBT THAT A SMALL GROUP
OF THOUGHTFUL COMMITTED CITIZENS
CAN CHANGE THE WORLD;
INDEED, IT IS THE ONLY THING
THAT EVER HAS.”

— MARGARET MEAD

Robert Hemmingson
Debra Hinze
Kevin Hinze
Thomas and Libby Horner
Dwight and Pam Johnson
Martin and Esther Kellogg
of The Saint Paul
Foundation
Kris and Dick Kiesling
Deirdre Flesche and Dag
Knudsen
Donald Kraybill
Lindsey Thomas and David
Lauth
L. Tracy Leavenworth
Renay and Gerry Leone
JP Little and Lynn Mattson
Little
Steven and Catherine Long
John and Mary Ellen
Lundsten
Kathryn Anne Mack
David Kelley and Molly
Maloney
Peter Martin
Clara Ueland and Walt
McCarthy
Glen Fladeboe and Ms.
Stephanie McClearey
L. David Mech
Daniel Jurgens and Ann
Merrill
Susan S. Meyers
Clint and Patty Miller
Nicholas C. Miller
Mary Miller
Andrew and Kristyn Mullin
Delano R. Nelson
Karen Oberhauser
Daniel T. O'Neill

John and Linda Peck
Bret and Karen Petersen
Dwight and Marjorie
Peterson
Anne and Brian Purrington
Eric and Jessica Rhyner
Thomas and Eve Rutter
Dennis M. Ryan
Mary Savina
Stanley and Lucy Shepard
Bruce and Jane Scharding
Smedley
Barbara A. Smith
Gerard and Nan Snyder
Nancy G. Speer
Jim and Carol Stark
Roger and Kay Strand
Ann C. Thies
Delon and Gail Underbakke
Virginia Van Dyke
Bonnie and Gary Van Erp
Angus Vaughan
Thomas C. Wells
Laurel Westrom
David and Beverly
Wickstrom
Frank and Frances Wilkinson
Charles and Victoria Willcox
Eleanor and Fred Winston
Bob Zeglovitch and Jane
Young

\$ 100-249

Walter and Donna
Abramson
Raylene J. Ahlgren
Evan and Nancy Anderson
Shirley and Charles
Anderson
Frani and Mark Anderson

Paul A. Anderson
Kari L. Anderson
Deborah J. Anderson
Donald and Susan Anderson
Donald S. Arbour
Todd Armbruster
Scott Armitage
Tom J. Arneson
Robert P. Axtmann
Charles and Judyth Babst
William and Shirley Baxter
Donald Beck
Robert E. Becker
Cole Becker
Robert and Phyllis Beery
Pamela Belz
Edward and Marcia
BMarthaler
Thelma Boeder
Karen L. Bohnert
Mark J. and Susan Bonitz
John Borgert
Janet Bratkovich
Thomas Bretl
Dorothy Slegman and
James Brewer
Jim and Jo Brewer
Conley and Carol Brooks
Margaret Brosnan
Richard (Dick) and Vera
Brown
Paul D. Brown
Stephen Earl Brown
Shawn Bundy
Ronald R. Burley
William B. Burns
Frank and Kristi Cadwell
Cindy A. Carlsson
Todd Rhoades and Therese
Cermak

Frank and Kathie Cerra
Chuck and Terry Chism
Sharon and Bill Clapp
Joyce Coate
Catherine Coult
Alva Crom
Tom and Diane deJolsvay
Roger and Irene Dellert
Steve and Nancy Deppe
Mark and Margo Dickinson
Charles and Jackie Dietz
Charles and Barbara Dodd
Daniel L. Donaldson
Ann and Lawrence Downing
Anita S. Duckor
Tom Duffus
Susan Dunavan
Robert and Bette Dunn
David and Susan Egloff
George Ehrhardt
David Elowson
Jim and Carey Erkel
Heidi Eschenbacher
Dean and Joanne Flugstad
Merle and Mavis Fossum
Craig O. Freeman
Bayard T. French
Marjorie W. Frost
A. Jane Fuller
Robert Fuller
Ronald R. Funes
Merlin Garlid
Ellen Gayle
Amanda Giliotti
Kathleen A. Gill
Rick Glasscock
Melvin F. Goldenbogen
Mace and Audrey Goldfarb
Richard H. Grabmeier
Judith Graham

Germaine and Donald
Grant
James R. Gray
Emily Gray Koehler
Janet and John Green
Kevin Gregerson
Matthew J. Grigal
Joanne Groten
Ralph and Nancy Gundersen
David Hagen
Paul Hagquist
Leo Halvorsen
Jon and Alyssa Hammar
Margaret S. Harder
Jesse Okie and Mary
Harrington
Marie Hauser
Mary and Louis Hauser
Susan L. Hawkinson
Jeffrey and Beth Hayward
Carter and Florence
Hedeon
Ross and Ruth Heilman
Lee and Elizabeth
Hickerson
Sandra Kaplan and Don
Hickman
Randall and Pamela Hinze
Deleanore Hinze
Timothy Hinze
Thomas Hodnefield
Thomas and Beatrice
Hoffmann
Tom and Alice Howe
Michael Huber
Dick Huston
Steve and Amy Isaacson
Lorraine Jirele
Bernard and Frances Jirele
Clifford and Betty Johnson

David and Cathy Johnson
Kenneth and Margaret
Johnson
Erika Johnson
Bruce and Shari Johnson
Charles R. and Sally B.
Jorgensen
Jan Kaeter
Margi Preus and Arno
Kahn
Fred and Susan Kaiser
William S. Kalseim
Thomas Karp
Maggie and Rick Karschnia
Steve and June Keibler
John and Lynda Kern
Joseph R. Kingman
Margaret Kinney
William Kittel
Gordon and Janice Klein
Sally and David Kohlstedt
Margaret A. Kohring
Marek and Virginia Kot
Matthew E. Kramer
Blaine Krogh
Neil and Deb Krueger
Virginia A. La France
Douglas and Betsy Lake
Michael and Barbara
LaMotte
Edward Landin
Cal and Loretta Larson
Maureen Steinwall and
Michael Lavelle
Tom and Rose Lawson
Charles and Hope Lea
Sally and Richard Leider
John and Susan
Lenczewski
Kristin M. Lenz

DONORS

Douglas and Jennifer Lewis
Jean R. Ljungkull
Edward and Beth Loftus
Scott and Sara Lounsbury
John and Cindy Lueth
Steven M. Lukas
William Ramsden and
Doreen Lynch
William S. Lyon
Warren and Joan Malkerson
Diane Mancini
Laurence and Karin
Margolis
Merritt and Betty
Marquardt
Robert L. Marshall
Jeffrey and Elizabeth
Martin
Mark and Laurie Martinson
Masconomo Forestry
Timothy and Patricia
Mauren
Steve Mattaini and Rita
McConnell
Bryan and Karin McGinnis
Daniel and Lucy McInerny
Jack and Terri McKeon
Rob and Becky McKim
E Anne McKinsey
Richard and Joan
Meierotto
Thomas Meyer
Christopher Meyer
Robert S. Micheletti
James and Patricia Miller
Ran and Beth Miner
Patricia M. Minton
Robert and Lucy Mitchell
Mary Kay Stranik and Mark
Nammacher

The Hon. Rosanne
Nathanson
John and Karen Neenan
Ruth Nelson
Bonnie E. Nelson
Mary Newstrom
Stuart and Kate Nielsen
Donald and Gerda
Nightingale
Mike Niziolek
Patrick and Elizabeth
Nunnally
Rita M. O'Connell
Bruce Ohnstad
John and Yvette Oldendorf
Philip K. Olson
Anthony Morley and Ruth
Anne Olson
Terry O'Neil
Doug Hoffman and Jen
Pearson
David and Judy Pearson
Allan and Corrine Petersen
Joyce Peterson
Brian and Joyce Peterson
John and Erika Peterson
Silas and Katharine Peterson
Kate K. Piper
Louise Benz Plank
Debra and Timothy Plude
Alana Podratz
Alan Polsky
Allen and Ramona Potter
John T. Quaife
Robert and Jean Raz
Deena and Steve Reisman
Norman and Emily
Rosenberg
Steve and Karen Sanger
Tim and Kim Scanlan

Hank J. Scheinost
C. Perry Schenk
Mike and Roxanne Schlasner
Anne Schlukebier
Robert Schoenberg
Sally Schroeder
Fred and Jan Schroeder
Dorene Scriven
Robert D. Shepard
Charles and Judith
Shepard
Brad Shinkle
Kurt and Diane Shirley
Ross and Janet Shoger
Steven and Jill Sicheneder
Sharon and Tom Simpson
Paul and Erika Sitz
G. Richard and Ella Slade
David and Stacey Smith
Tom Smolenski
Linda and Steve
Soderholm
Mike and Peg Sowada
Stephen and Susan
Stedman
William and Carol Steele
Don and Sonja Steinke
Judith Steltzner
Charlotte Stephens
Gary A. Strandemo
Rolf and Patricia Svendsen
Donald and Virginia
Swanson
Patricia and Roger Sween
Sheila Sweeney
Rachel Hampton and
Dariusz Szewczak
Joseph Taatjes
Erica TenBroek
Mike and Hannah Texler

Richard Thouin
Andrew Tulchin
Robert Turkington
Faye Ulrich
Roger and Carolyn Vacek
George and Josephine
Vania
Frank M. Vierling and John
Brosnan
Greg Vierling
Nancy and David Warner
Ann Warner
Eric Watkins
Kenneth and Elizabeth Weir
Dennis P. Welsch
Nick Johnson and Amy
White
Janice and Paul Wicklund
Michael and Jani Wiebolt
Robert and Debra Williams
Sara Willis
Kristie and Shawn Willy
Joe and Laurie Wlosinski
Molly and Bill Woehrlin
Michael Wolsted
Charles Wright
Bryan L. Wyberg
John and Eleanor Yackel
Gloria D. Zaiger

Gifts up to \$99

Rachel E. Abbott
Felicia Ablar
Phyllis M. Abrahamsen
Karen Achberger
Ronald Adams
Richard Starr and Joanne
Alt
Cindy Amundsen
Dean and Janet Anderson

Chel Anderson
Gayle Anderson
Chel Anderson
Mark and Donna Anderson
Grant Andreasen
Cindy K. Angerhofer
Jerome and Karen
Appeldoorn
Robert and Patricia Astrup
Catherine Augustson
Eugene Aurelius
Bruce H. Ause
Harold Babineau
Jennifer Bachman
Donat Backes
Michael and Margaret Bahr
Georgene Baker
Michael Balfany
Elaine Barber
Donna Barnett
Paula Barton
Joel Bartos
Gregory and Coral Bastien
Sherrie and Brad Beal
John A. Bell
Karl-Edwin Bell
Robert B. Benjamin
Craig Berdan
Craig Berdie
Brenda Berglund
Phyllis Bergstrand
Michael D. Bernatz
Edwin Bernard
Bernard and Pamela
Bidelman
Ann Bloch
Susan D. Blom
Mary Blood
Edward and Connie Bloom
Michael and Carol Blowers

Alan Bohme
Alyssa Boock
Nancy and Steve Braker
Michele W. Brennan
Muriel Brink
Rodney and Marilyn Broding
Sue and Chris Brokl
Rhoderick Brown
Janet and Robert Bruce
Jane Brugman
Bill and Ann Bruins
Karl and Ruth Brunner
Deborah Bryant
Erica Buffington
Maynard and Norma Buland
Laura Burnett-Kurie
Trilby Busch
Paul O. Busch
Mary L. Butler-Levine
Jeffrey Byers
Josh Capps
Robert and Gail Carlson
Dave Carlson
Bruce and Joann Carlson
Richard and Margaret
Carman
James Cashman
Nancy Cassano
Joseph Cavaleri
Jack and Elizabeth
Cedarleaf
James Risser and Tereza
Cervenka
Steve and Sue Chaplin
Elizabeth Charbonneau
Andrew G. Church
Samuel Zins and Jerilyn
Clark
Peter Kennedy and Teresa
E. Clarke

SUSTAINING MEMBERS

These individuals make generous gifts on a monthly basis that support the work of the Minnesota Land Trust. You, too, can be a sustaining member by going to mnland.org or by calling 651-647-9590.

Sherrie and Brad Beal
David Elowson
Fitz and Heather Fitzgerald
Janis Hall
Jane Harper and John Velin
Jesse Okie and Mary Harrington
Randy Lake and Colleen Keough

Richard Kingsley
Michael and Barbara LaMotte
Lori L. Larson
Hamlin Metzger
Clint and Patty Miller
Mary Newstrom
Kelly Scanlan
Lee Scholder
Cynthia Schou

John and Marilyn Fritz
Shardlow
Kurt and Diane Shirley
Carl Smith
Nancy G. Speer
Rebecca Townsend
Virginia Van Dyke
William Walker
Dunn Yoshitani
David Zarkower



FITZ FITZGERALD

Dan Clarkin
Paul Tosto and Martha Cleaveland
M. Eileen Conlin
Douglas Connell
Donald C. Conner
Carmen K. Converse
Janet Conway
Elsie and Philip Cook
Stewart Corn
Denis and Nancy Cornell
Arielle Courtney
Jessie Hassis Cowette
William and Kathleen Croke
William A. Crosley
Edward and Julie Dallas
William and Mary D'Amour
Gail Daneker
Terrell Daniels
Jim Danielson
Bruce and Mary Davis
James T. Davnie
Thomas S. Deans
Bret Pence and Laura Delaney-Pence
Robert Dengler
Nancy Depaz
Bernice E. M. Dickson
Jean M. Diekmann
Kathryn Dierkes
Bob and Ann Djupstrom
Katie and Bryan Donald
Stephen Hinze and Margaret Donohue
Jean Doolittle
Myrna Dorrance
Greg Thomas and Carol Downie
Sharon Dreifus
Joel and Sandra Dunnette

Valerie Eastland
Earl and Margaret Eberhardt
Janet Ebersold
Mark and Mary Eckman
Lee Edmiston
Lee C. Ehmke
Larry Ellis
Diane Erdmann
John and Marlee Eret
Marian I. Erickson
Rita J. Erickson
Elizabeth Erickson
Charles and Patricia Eversman
Lu Ann and Roger Eye
Jill M. Fagerstrom
Harold and Jo Featherstone
Rick Fenske
Angela Fiero
Barbara Filippi
Kathryn Fini
Barbara Malkerson Fischer
Jacki Fisher
Joe and Joan Fitzgerald
Jerry Fitzgerald
Jenna Fletcher
Dennis L. Flom
Jay Foley
Joseph Kendrick and Mary Ford
Carl and Julie Forderer
Sharon Foss
Marie Franckowiak
Roger and Carolyn Fransen
Holly Frei
Chris and Gail Fretham
Carol and Ian Friendly

Scott Fuller
Lynn Galle
Dale and Luella Gannarelli
Kevin and Barbara Gardiner
Diane Garetz
Robert Gartner
Kathleen Gavin
Robert Brodie and Debra Gerads-Brodie
Dan Gilbert
John and Cindy Gilpin
William and Judy Gitar
Dr. Stanley M. and Luella G. Goldberg
Jan Goldman
Nancy Gongoll
Muriel Gorham
Thomas and Mary Gover
Riley and Lyssa Grams
Jay Greenberg
Carol Greeney
Eric and Nancy Greenfield
Jean Greenwood
Robin and Synnove Grinnell
Thomas and Mary Gross
Ann and Len Guggenberger
Allan and Barbara Gulden
Shannon Flynn and Edward Gundel
Randy and Yvonne Guzman
Carl and Cynthia Haensel
Mark T. Hagley
Janis Hall
Gay Hallberg
Tim and Judy Halnon
David Hammer

Kenneth and Mary Handt
Kathleen Hannan
Rodney and Diana Hanson
John D. and Eileen A. Hanson
Kent and Judy Harbison
Ronald and Kelly Harlander
Dan and Terry Hasenstein
Kathryn S. Haugrud
Homer Hauke
Mary C. Hayes
Aaron Heim
Willard Everett and Betty Hein
John and Julie Henricksson
Evelyn Henry
John and Diane Herman
Ken Heruth
Paul D. Hesterman
Patty Hill
Curtis Hillstrom
Mel and Ellen Hintz
Peter Hoff
Florence Hofstede
Reinart and Ida Mae Holland
Robert J. Holly
John Holman
Julie F. Holmen
William and Donna Holtan
Halverstadt
Dale Homuth
Dennis Honigs
William and Ardys Hoogestraat
Laurie Hougen-Eitzman
George and Cheryl Howe
Elden Huemann
David and Mary Hulse
Fred and Kathy Hund

Beverly Murphey and John Hung
Jay G Hutchinson
Matthew Hyle
Eva Hyvarinen
William and Jane Iacono
Doug and Jennifer Isackson
Helen Jackson
Thomas and Jan Jacobson
David M. Jacobson
Diane and Paul Jacobson
Vicky Jaskierski
Patricia Jensen
Geri Jensen
Mary Jenson
Mike Jerešek
Patrick and Jean Jerhoff
Lowell and Andrea Johnson
Marianne Johnson
Rodney and Lillian Johnson
James S. Johnson
Theodore A. Johnson
Craig R. Johnson
William A. Johnson
Julie A. Johnson
Douglas and Jean Johnson
Cavour and Roberta Smidt Johnson
Suzanne Jones
Orville Jonsrud
Kristin Raab and Andrew Joyce
Charyl Junker
Keith Kalenda
Arnold and Shirley Kaplan
Mary Jo Kasten
James Moudry and Carole Kastigar
Lytton Alden Kendall
Steve W. Kerrigan

Richard Kingsley
John Kirchner
Ralph E. Kjollien
Julie Klassen
Michael Klinepiper
Chris Knopf
John and BJ Kohlstedt
Sharon Kolle
Karla Komec
Lisa Kominski
Sandra and Dan Korthis
Luanne Koskinen
Caroline Kostroski
Lynn R. Krafve
Michael Krause
Dennis Kresal
Marjorie Krull
Kate and John Kubiak
Susan Armington and Yuichi Kubota
James Kugler
Lisa Kuhnau
Mark and Wendy Kuzma
Neal Lahti
Evron Laitala
Gertrude Lambert
Pam and Roger Landers
Richard G. Lareau
William and Marilyn Larson
Lori L. Larson
Paul and Sharlene Legenhausen
Cecil Leitch
William and Kathryn Levenick
Mary Lewis
Linda Lewis
William and Pearl Lieb
Harold Lieberman
Linda Liestman



DONORS

Jacqueline Lind
Ann Lindstrom
Walt and Darcy Ling
Elliot Long
David and Marcia Lothner
Alfred E. Lounsbury
Randall Ludtke
Jeffrey A. Lukens
Robert Lundberg
Maribeth Lundeen
William M. Lutz
Harlan Luxenberg
John and Barb Lynskey
Michael Macioch
Margaret J. Mackaman
Susan Mahler
Kathy Maleck
Sherman Malkerson
Lynne and Howard Markus
Dave Martin
Molly Martin
Elizabeth Martin
Wesley and Barbara
Mattson
Calvin and Deanna
Mattson
Lyndon Mc Murtry
Bruce McBeath
Holly Ager and Robert
McCabe
Michael McCue
Andrew and Carmen
McDavid
Richard and Tamara
McGehee
Mary McInerney
Nancy McIntire
Andrew McKibben
Dan Shaw and Judith
McKloskey

Bob McNeil
Gretchen Mehmel
John K. Meinert
Krista Menzel
Albert and Kim Mercuri
Margaret Merkow
Scott Merrill
Paul Schollmeier and
Christine Meyer
Janet Meyer
David Meyers
Jeanne C. Mielcarek
Paul Miller
Patricia Mills
Stephanie Mischnick
Gilbert Tostevin and
Gilliane Monnier
Norman Moody
Paul and Nancy Moran
Bonnie Morris
Janet Munger
Ruth Myers
Gwen S. Myers
Jerry and Ruth Narr
Eric C. Nelson
Carmelita Nelson
Angie Nelson
Clarence and Geraldine
Nelson
Merrill Nelson
Gregory Nelson
Eileen C. Nelson
Greg and Brenda Nethery
Robert Neuenfeldt
James Newton
Kent Nichols
Nancy Lee Niva
Richard and Raymonde
Noer
Emily Novak

Sharon Nyberg
Bruce Mancini and Betty
Nystrom
Jack Oelfke
John and Rebecca
Ofstehage
Janet Oistad
Alan and Kathleen Olander
Clifton Ollila
Bethany Olmstead
Mark and Melissa Olson
Laura A. Olson
Arnold G. Overby
Sharon L. Overholser
Frank Pacovsky
Joseph F. Palen
Robert Palkert
Bill Palmquist
Bonnie M. Palmquist
David Palmquist
Margaret F. Pansch
Ruth Paradise
JoAnn Pasternack
Clifford Patrick
Stephanie Pearson
Mark R. Peil
David and Cindy Pelowski
Beryl Perry
David and Andrea Peterson
Jody Peterson
Gene Phelps
Martha G. Phillips
Arliss T. Piri
Glen Pitlick
Lawrence Krantz and
Diane Pittman
Lyle and Elizabeth Plumhoff
David Price
John R. Probst
David and Vicki Rachi

Myrene L. Rachu
Thaddeus A. Raczek
Paul and Hollie Radomski
Dennis Rankin
Michael and Jennifer
Reckinger
Michael Reed
Josephine Reed
Charles and Susan
Reinhart
Barbara Rice
Joan Richardson
Gene and Mary Ann Rick
Laurence and Patricia
Ricker
Kristen Ringham
Robert and Rebecca Rise
Robbie Weisel and Britt
Robson
Walter and Jodell
Rockenstein
Mark and Barbara
Rodorigo
Steven Roecklein
Dan and Cynthia Rogers
Lawrence Rolison
John and Connie Rollings
Robert H. Rosenberg
Earl Rosenwinkel
Rodney and Elaine Ross
Jeff R. Rotschafer
Lawrence Schug and
Juliann Rule
Lois Runge
Orlando Ruschmeyer
Wayne Russ
William and Diane
Rutherford
Jennifer Sahlin
Julius Salinas

Eileen Schantz-Hansen
Julie Schanzenbach Canham
James Scheidt
Robert and Karen Scheierl
Larry and Carolyn Schmidt
Bruce Schoenberg
Dan Schoeneman
Lee Scholder
Lowell and Betty Schow
Fred and Lorraine
Schreiber
Ralph S. Schwartz
John and Lois Schwob
Thomas Scott
Dennis H. Searle
Patty Seflow
Michael Shaw
Don and Shelley Sherper
Joellen Silberman
Cathleen Barczys Simons
Diane D. Sineps
Kara Skahen
Fritz Smead
Rolf Smeby
Eugenia Smith
Joan Smith
Jennifer J. Smith
Carl Smith
Kate Golden and Mike
Smith
Lori A. Sogn
Leif and Jeanne Solberg
Joan Solomon
Donald Sotebeer
Laurine Speltz
Katrina St. Clair
Judith and Jerry Stanke
John and Sharon Stenglein
Orrin and Barbara Ann
Stevens

Jeanne Stever
Mark and Ann Walsh
Stewart
Loren and Anita Stockton
Marybeth and Evan Stoltz
Paul Stone
John and Eleanor Strand
David W. Strick
Gerald and Barbara Strom
Susan Sukalski
Robert Sunderlin
Tim and Carolyn Sundquist
Mary Keirstead and
Edward Swain
Richard and Bonnie Swanson
Glen and Elizabeth Swanson
Leland and LaVerne Swanson
Paul Swenson and Karine
Swensen Moe
Darrel and Joie Swenson
Merle H. Sykora
Andrea E. Szondy
Sheila Tatone
Robert Teed
Mike Tegeder
Kathryn Teson
Diane Tessari
Mary L. Testor
Mel Thelen
Gery A. Then
Gerald Manley and Teresa
A. Thomas
Donald and Virginia
Thompson
Steve and Jeanne
Thompson
Rolf Thorfinnson
Sandra Thornby
Darrell Thorstenson
Marcia Tippery



CORPORATIONS, FOUNDATIONS & ORGANIZATIONS

Rebecca Townsend
 Dean L. Townsend
 Rebecca Townsend
 James Tschann
 Janis Tweedy
 Herm and Martha Urbasic
 Carol Urness
 Gary and Nancy Van Cleve
 Jean Silberman and Tom
 van der Linden
 Kay VanBuskirk
 Daniel and Linda Veillet
 Mary Ellen Vetter
 Bradford Vifquain
 Ken Visger
 Robert and Mavis Voigt
 Mary Volk
 Philip Voxland
 Louise Waddick
 William Walker
 Hans Wanzenried
 Thomas and Shelli Wappes
 Lora Lee Washburn
 Nicholas and Karyn Wasylik
 Stuart G. Webb
 Bruce Weeks
 Glenn Shoemaker and
 Nancy Weiss
 Michael Welch
 Mac Welles
 Shelly Langlie and Jeffrey
 Wendt
 Michele Vaillancourt and
 Brent Wennberg
 Lisa Wersal
 Warren "Buster" West
 Richard A. Wetzler
 Mary and William Wever
 Angela Weyandt
 Molly Weyrens

John and Kelly Wheaton
 Joseph Wieners
 Warren Wildes and Mary
 Wildes Stevens
 Margaret Wiley
 Cheryl Weibye Wilke
 Burton Will
 Guy Williams
 Alex and Marguerite
 Wilson
 Ron Winch
 Nathan Winkelman
 John Winslow
 Jessica Wirth
 John and Cynthia Wisniak
 Skelton
 Karen Wood
 Russell and Barbara
 Wright
 Frank I. Wright
 Dale Wright
 Larry Wydra
 Kristin Wyeth
 Pai Yang
 William Youmans
 Robert A. Young
 John B. Young
 David Young
 Jane Thayer Young
 David Zarkower
 Lara Zuleger
 Bruce Zumbahlen

*We have made every effort
 to ensure accuracy and
 ask that you contact us at
 651-647-9590 with any
 concerns.*

Alemar Cheese Company
 Alexis Bailly Vineyard
 Alton Foundation
 Ameriprise Financial Matching
 Gift Program
 Angry Catfish Bicycle & Coffee Bar
 Athwin Foundation
 Atypical Inn
 Blacklock Gallery
 Belwin Conservancy
 Buffalo Exchange
 Cardno JFNew
 The Cornerstone Group, Inc.
 David Winton Bell Foundation
 Dellwood Foundation
 Eichtens
 Elmer L. and Eleanor J. Andersen
 Foundation
 Enbridge Energy Company
 Ernest C. Oberholtzer Foundation
 Faribault Dairy Company
 Faribo Woolen Mills
 Flint Hills Resources
 Fredrikson & Byron, P. A.
 Fredrikson & Byron Foundation

Frost River
 Gray Plant Mooty
 Greystone Foundation
 Hardenbergh Foundation
 IBM Matching Gift Program
 Lakewinds Natural Foods
 Land Trust Alliance
 Larkin Hoffman
 Liberty Diversified International
 Lloyd K. Johnson Foundation
 Emily Gray Koehler Studio & Gallery
 Loll Designs/Epicurean
 Lucia's
 MAHADH Fund of the HRK
 Foundation
 Margaret Rivers Fund
 The McKnight Foundation
 Medtronic Foundation Matching
 Gift Program
 Merry Little Bath Company
 Microsoft Matching Gift Program
 Morsman Family Foundation
 Mortenson Family Foundation
 National Camera Exchange
 Norcross Wildlife Foundation

Patrick and Aimee Butler Family
 Foundation
 Pisces Ceramics
 Open Door Foundation
 Rahr Corporation
 Rahr Foundation
 Red Stag SupperClub
 Sanborn Canoe Company
 Shepard's Way Farms
 Smikis Foundation
 Spicer Castle Inn
 Stantec Consulting
 Sturdiwheat
 Summit Brewing Company
 Sunrise Banks
 Thrivent Financial for Lutherans
 Foundation Matching Gift
 Program
 Toro Foundation Matching
 Gift Program
 US Bank Foundation Matching Gift
 Program
 Xcel Energy
 Xcel Energy Matching Gift Program



ENCAMPMENT RIVER AREA CONSERVATION FUND

Gifts to this fund support land protection activities in the Encampment River watershed along Lake Superior's North Shore.

Julie D. Andrus
Ben and Nancy Aurand, in honor of Cal and Lois Aurand
Bruce and Mary Bean
Priscilla Brewster
John and Barbara Budd
Peter B. Budd, in memory of John M. Budd Sr.
Ted and Charlie Burton
Charles and Marion Burton
Ann C. Cassell
Stewart and Lesley Crosby
Leonard and Beth Dayton
Jack and Susan Dilday Family Foundation
Sybil S. Eakin, in honor of Charlotte & Ward Johnson,
and John Shepard and Suzanne Brust
Stephen and Elizabeth B. Ellmann
Louise (Teedie) Mairs Frankenbach, in memory of
Dr. Harry P. Ritchie
Robert and Jacquelyn Gardner, in honor of Sue and
John Bathke
Keith and Kristie Harrison
Thomas and Julie Gillette Johns
Eric and Margit Johnson, in memory of Mary F. Carson
Ward and Shotsy Johnson
Elizabeth Kelsey
Christine M. Linsmayer, in memory of Robert M. Linsmayer
J. Nicholas Linsmayer, in memory of Robert M. Linsmayer
Dusty Mairs
Susan Mairs, in memory of Charles Frankenbach, Jr.
Robert Mairs
Elizabeth R. Mairs
Heide Mairs
Jill McCarthy, in memory of Anne Leslie McCarthy
Tom and Darlene McCarthy, in honor of Anne Leslie
McCarthy

Susan and Edwin McCarthy
Kent Chasson and Carrie McCarthy
Michael and Kay McCarthy
Elspeth and F. William McClelland
Bridget O'Brien and Mark Nelson, in memory of Daniel
W. O'Brien
Dan and Sallie O'Brien Fund of The Saint Paul Foundation
Tom and Meredith Olson
Charles Pitzele
Lucinda Pratt
Walter and Harriet Pratt
Judith Proudfit, in memory of John and David Pratt
Kate Riegel, in honor of Kristin and Mark Riegel
Daniel and Alicia Ritchie
Wint and Tina Ritchie
Thomas and Kathy Rivers
Eric Schmitt, in memory of Granny Carlaw
Margaret Seely
Neil and Lynne Snider, in memory of Edith M. Jones
Frank and Mary Stowell, in honor of Beth McClelland
John J. and Mary M. Taylor
Tim and Diane Thorpe
Betty Tiffany, in honor of Kristin and Mark Riegel
Brad Wallin
Bob Miller and Margot Willett, in memory of
Betty and John Musser
Sarah R. Winton
Sarah Chase Winton
Lucy S. Winton
Rufus and Elizabeth Winton
Nicholas D. Winton
David J. Winton II
David Knoblauch and Sue Woodrich in memory of
Connie Woodrich Myhre



FITZ FITZGERALD

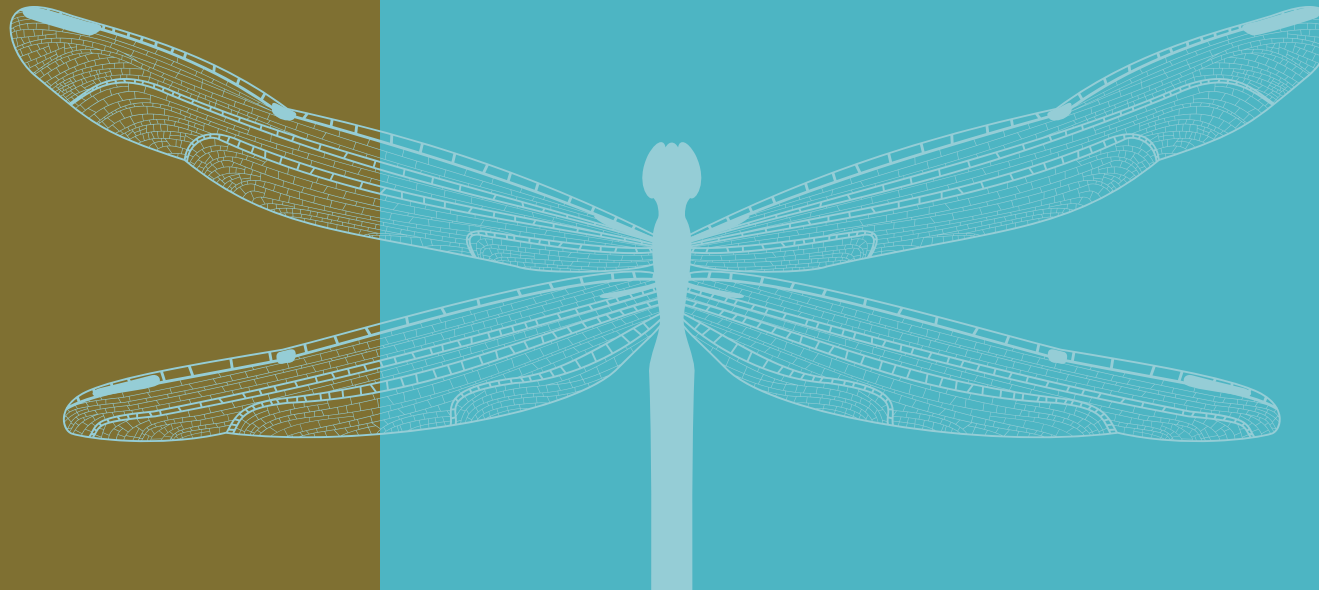
RAINY LAKE

GIFTS OF LAND OR CONSERVATION EASEMENT

Gifts to this fund support land protection activities in the Rainy Lake area.

Anonymous
 James and Rosalyn Hawley
 Kenneth and Anne Helms
 A.C. Hickox
 John Holtzermann
 Larry and Jo Kallemeyn
 Gary Marsden
 James and Sara P. Martineau
 Robert and Marveen Minish
 Blake Hoel and Berit Nelson
 Karen P. Nelson
 Anne H. Newhart
 Bruce and Linda Scott
 Wallace and Rose Simpson
 Sam and Cyndy Stenson
 Henry and Virginia Sweatt
 Philip and Carolyn White Wallis

Joan Barnes
 Craig and Honey Blacklock
 Blacklock Nature Sanctuary
 James and Sandy Coder
 Rose Ebeltoft
 Ike and Helen Fischer
 Peter, Ryan and Sean Flaherty and
 Katherine Uppgaard-Flaherty
 David Harrington
 David B. Heegaard
 Carol Kratzke
 Estate of Dr. Nancy Lund
 Donald H. Nelson
 Lori and Donald Thorp
 Linda and Ed Hendrickson
 Roger Herbst
 Larry and Frances Weber



In Memory of:
 Don Alstad, by Kent and Judy Harbison
 Joey Anderson, by Frani and Mark Anderson
 Anonymous, in memory of Gerald and Olivia
 Linus and Margaret Bach, by Edward and
 Marcia BMarthaler
 Dr. Clifford P. and Laure H. Bell, by
 Karl-Edwin Bell
 Debbie Conn, by Cathy Conn
 Robert R. and Wahneta C. Conner, by
 Donald C. Conner
 James J. Farrell, by Barb Farrell
 Erwin Frei, by Holly Frei
 Rick Hagen, by Kathleen Gavin
 Robert T. Kolstad, by Steve and Linda
 Soderholm
 Thomas Lawson, by Tom and Rose Lawson
 Arne Long, by Steven and Catherine Long
 Mary E. Lounsbury, by Scott and Sara
 Lounsbury
 John Mackaman, by Margaret Mackaman
 and Brian Amelang
 Marjorie Graham Oelfke, by Jack Oelfke
 Constance S. Otis, by Stanley and Lucy Shepard
 Colleen Peterson, by David and Andrea
 Peterson
 John Sineps, by Diane Sineps

In Honor of:
 All who love Minnesota, Cheryl Wilke
 Theodore and Edna Bergman; June and Vern
 Lake by Randy Lake and Colleen Keough
 Cody, by George and Cheryl Howe
 Roger and Carol Everhart and family, by
 Mark Newstrom
 The Wedding of Colleen Carey and Pam
 Edean: Terrell Daniels, Sheila Sweeney,
 Wolfgang and Martha Greiner
 Richard Allendorf and Paul Markwardt
 Elly, by Virginia VanDyke
 Barb Farrell, by Dick and Debby McNeil
 Fitz Fitzgerald, by Joe and Joan Fitzgerald
 Brad Fuller, by Jane Fuller, Robert Fuller and
 Scott Fuller
 Goetzman/Kamrowski Big Valley Ranch
 Century Farm Celebration, by Gayle
 Goetzman
 Chuck Gros, by Julie Schanzenbach Canham
 Phillip Jares and Mark Hager and families, by
 Mark Newstrom
 Bonnie Meier, by Terrence Demos
 Ignatius O'Shaughnessy, by John and
 Janet Erickson
 C.F.E. Peterson, by George and Lynn Devins
 Sierra, by Dorene Scriven
 Diana Kamp, by Eugenia Smith
 Evelyn White, by Judy and Tim Halnon
 Greg Wright, by Frank L. Wright



MINNESOTA LAND TRUST



MINNESOTA LAND TRUST
WWW.MNLAND.ORG

394 South Lake Avenue | Suite 404 | Duluth, MN 55802
2356 University Avenue West | Suite 240 | St. Paul, MN 55114

651-647-9590 Toll Free: 1-877-MLT-LAND
Email us at: mmland@mmland.org



BOARD MEMBERS

- Peggy Adelman, Treasurer
- Kurt Apfelbacher
- Bob Bush
- Tim Edman, Secretary
- David Fransen
- Brad Fuller
- Patti Gartland
- Loren Hansen
- Susan Heegaard
- Patrick Hynes
- Sharon Johnson
- Wood Kidner
- Carolyn Kohrs
- Hamlin Metzger
- Karen Oberhauser
- William Rahr
- Kelly Scanlan, Vice Chair
- John Shardlow, Chair
- Sue Steinwall, Vice Chair
- Brad Wallin
- Dunn Yoshitani

STAFF

- Kris Larson, Executive Director
 - Walter Abramson, Director of Development
 - Nick Bancks, Conservation Associate
 - John Brosnan, Director of Land Protection
 - Pat Collins, Program Manager: Critical Shoreline
 - Barbara Farrell, Staff Paralegal
 - Francis "Fitz" Fitzgerald, Regional Conservation Director*
 - Kristina Geiger, Program Manager: Monitoring & Land Management
 - Hansi Johnson, Director of Recreational Lands
 - Maggie Karschnia, Program Manager: Wetlands & Grasslands
 - Barbara LaMotte, Director of Operations & Communications
 - Susan McCallum, Office Manager
 - Daryl Peterson, Director of Restoration Programs
 - Gena Setzer, Staff Attorney
 - Ann Thies, Director of Conservation Stewardship
 - Mark van der Linden, Baseline Project Associate
- * Retired May 2014

In addition to the staff members listed above, the following individuals and organizations provide high-quality services that enhance our mission:

- Patrick Anderson, Project Contractor: Wetlands & Grasslands
- George Howe, Project Contractor: Blufflands and Metro
- Jimelle Duncan, Bookkeeping
- Community GIS, Mapping



FSC



The Minnesota Land Trust greatly appreciates the use of photographs by the following talented individuals. Their gifts allow us to put more resources directly into land protection. Thank you: Craig Blacklock, Rebecca Field, Fitz Fitzgerald and John Pennoyer. Cover images: Loon: Rebecca Field; Pine marten: Craig Blacklock. Design: Barbara Pederson