



OUR STATE,
OUR LEGACY.



MINNESOTA LAND TRUST
2012 ANNUAL REPORT



One of my earliest memories is sliding under the cattle fence with my Zebco fishing rod and pint-size tackle box in hand, tripping after my dad to fish the creek behind our house. From that pre-schooler's perspective, my dad was a patient, larger than life character.

As I've grown older, these memories are not accidental: my father was deliberate about sharing something he loved and making sure my sister and I were exposed to the sights, sounds and smells of the outdoors. I may not have caught many fish on our outings, but I did catch something else: my father's legacy of appreciation – and a responsibility – for the woods, creeks and fields of my childhood. It's become a fundamental part of who I am.

In much the same way, Minnesota has benefitted from some larger than life characters that have shaped our shared values of respect and affection for the land. You know these giants: Ernest Oberholtzer and author and conservationist Sigurd Olson, both founding members of the Wilderness Society. Both led epic battles to preserve Minnesota's northern wilderness.

But I would be remiss if I didn't mention another more contemporary hero of Minnesota land conservation, C. Robert Binger. With Bob's passing at age 93 this summer, we have lost another conservation giant.

Over the years, Bob created his own larger-than-life narrative. He served with Admiral Chester Nimitz in WWII and participated in the landing at Iwo Jima and Okinawa. He went on five expeditions into the Canadian Arctic by sled dog in the 1960's, earning a place in the renowned and exclusive Explorers Club. During the 1980's he personally arranged for a shipment of grain to famine-stricken Africa.

Bob had little time for accolades; he was a hard-working, results-oriented kind of guy in both his personal and professional pursuits. As a founding member of the Minnesota Land Trust, Bob was responsible for our very first conservation easement back in 1993.

Bob continued his interest in the Land Trust. During visits at his home in White Bear Lake, he could be like a stern yet caring grandfather. Generous and visionary, he made a large gift a few years ago to the Land Trust that continues to help us complete land protection projects in and around his beloved Burntside Lake.

But while Bob's story is extraordinary and inspirational, he is not alone. From the Land Trust's board members and supporters, to the landowners and volunteer monitors we work with on a daily basis, the stories of generosity and passion for the land abound.

I invite you to turn the pages of this Annual Report for Fiscal Year 2012 to learn more about the legacy that you and other visionaries of Minnesota conservation are helping to create. I imagine that Bob – and the conservation giants of other generations – would be pleased by the progress we are all making towards ensuring that the most treasured places in Minnesota will be there for our children to enjoy, and for generations to come.

Kris Larson
Executive Director



MINNESOTA LAND TRUST

BOARD MEMBERS

Peggy Adelman
Kurt Apfelbacher, Treasurer
Tim Edman
Stan Ellison
David Fransen
Brad Fuller
Patti Gartland
Susan Heegaard
Patrick Hynes
Sharon Johnson
Jim Mayer, Vice-Chair
Hamlin Metzger
Karen Oberhauser
Julie Perrus
Melissa Peterson
William Rahr
Kelly Scanlan
John Shardlow, Chair
Sue Steinwall, Secretary
Dunn Yoshitani

MINNESOTA LAND TRUST

www.mnland.org



394 South Lake Avenue
Suite 404
Duluth, MN 55802
651-647-9590

40 North 1st Avenue East
P.O. Box 298
Ely, MN 55731
651-647-9590

2356 University Avenue West
Suite 240
St. Paul, MN 55114
651-647-9590

Toll Free: 1-877-MLT-LAND

Email us at:
mnland@mnland.org



FSC

MINNESOTA LAND TRUST

Kris Larson,
Executive Director

Sarah Strommen,
Associate Director

Walter Abramson,
Director of Development
& Communications

John Brosnan,
Project Manager

Barbara Farrell,
Staff Paralegal

Francis "Fitz" Fitzgerald,
Regional Conservation Director

Maggie Karschnia,
Land Protection Associate

Barbara LaMotte,
Development Associate

Susan McCallum,
Office Manager

Anne Murphy,
Conservation Stewardship Director

Daryl Peterson,
Senior Project Manager

Gena Setzer,
Staff Attorney

In addition to the staff members listed above, the following individuals and organizations provide high-quality services that enhance our mission:

Jimelle Duncan,
Bookkeeping

Community GIS,
Mapping

Special thanks to Bryan Hansel, Robert J. Hurt, Mitch Kezar, John Pennoyer, Charise Badzinski for their generous gifts of photography for this report. Vintage postcards with permission from the Minnesota Historical Society.

ONE FAMILY'S LEGACY OF LAND PROTECTION

Their dream: starting a Quaker community in the young state of Minnesota. Brothers Jacob and John Emmans acquired land grants on property near present-day St. Francis in Anoka County. As time passed, succeeding generations moved to town and the land was no longer worked. But the story of this farm was far from over. During World War II, war bride Marian Anderson (descendent of Jacob Emmans and namesake of his wife) was determined to realize yet another dream: that of her B-29 fighter pilot husband, Gordon, to come home safely and raise chickens. Marian, born and raised in St. Louis Park, was definitely not a farm girl. Undeterred and encouraged by her mother, Marian bought a tractor and some chickens and, with her dog McTavish at her side, began to revive the 80-year-old farm.

Several years ago, Marian and Gordon noted the increasing subdivisions that were surrounding their bucolic family farm and approached the Minnesota Land Trust about protecting their land. Together with their son and his wife, John and Barb Anderson, they donated a 92 acre conservation easement to the Land Trust in 2005.

Marian and Gordon have since passed away, but John and Barb have continued their parent's desire to preserve more of the Emmans farm. Last summer, they protected an additional 80 acres with the Minnesota Land Trust. "We are thrilled to protect more of the land that had meant so much to our parents," says John.

Over the decades and despite the forces of 'progress,' most of the original Emmans farm land remains and today it is a sanctuary for wildlife in this rapidly urbanizing area.



[MARIAN FEEDING CHICKENS AND DRIVING THE TRACTOR WITH "MACTAVISH" IN 1945. PHOTOS: STAR TRIBUNE]



[THE 260 PROTECTED ACRES AT EMMANS FARM CONSTITUTE ONE OF THE LARGER UNDEVELOPED PARCELS IN NORTHERN ANOKA COUNTY. STAFF PHOTO.]



A LEGACY OF LAND PROTECTION

For some, memories lie deep within a particular place – the family cabin, a familiar campsite, even a well-traveled bend in the road. For others, Minnesota is like the pages of an ever-expanding travelogue. Such a variety of topography and scenery invites us to explore from the northernmost border lakes all the way to Pipestone prairies of the southwest.

These experiences and memories create a sense of connectedness to our state, and a sense of responsibility to the generations that follow us.

Minnesota Land Trust members, volunteers and landowners have contributed to a growing legacy of protected land, permanently protected from development for the benefit of future generations.

BURNTSIDE LAKE >

The essence of Burntside Lake is captured in the clear water that laps the lichen-covered bedrock shore and clusters of wild islands which dot this iconic lake. Seven of those islands are protected with conservation easements by the Minnesota Land Trust. Altogether, over three and a half miles of Burntside shoreline are protected forever, including Sigurd Olson's Listening Point.

GRAND MARAIS HARBOR v

Today, residents and visitors experience the charm and attraction of Grand Marais' Harbor Park which, thanks to dedicated residents and the Minnesota Land Trust, reflects the unharnessed beauty of Lake Superior's North Shore. Sweetheart's Bluff and a good portion of the harbor shoreline will remain undeveloped forever because of a conservation easement with the Land Trust.



**ROOT RIVER -
APPLE BLOSSOM DRIVE >**

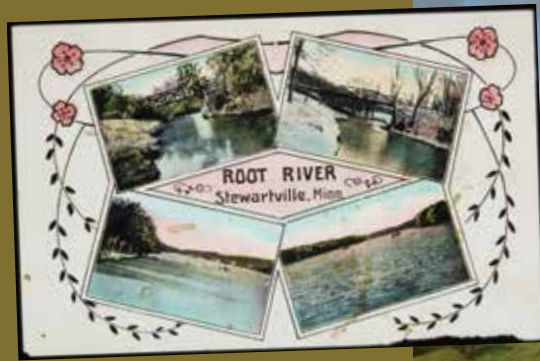
Historic red barns and spectacular bluffs are part of the scenery that can be enjoyed by bikers, paddlers and touring automobiles. In all, the Minnesota Land Trust has protected nine properties containing hardwood forests, meadows, working farms and public parks—including nesting sites for peregrine falcons.

AVON HILLS >

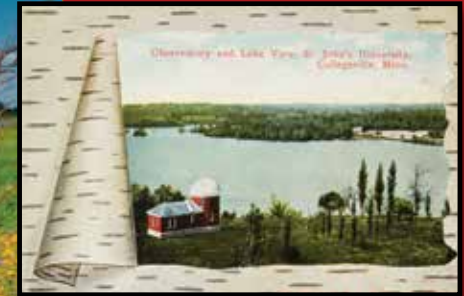
A partnership between the Minnesota Land Trust and St. John's Arboretum is just one of the legacies of the Benedictine tradition of environmental stewardship. The result is over 400 acres of gently rolling, forested hills and quiet shorelines protected from development in this high-growth corridor around St. Cloud—good news for the many rare plants and animals that have been documented in the area.

LAKE VERMILION >

Someday you may find yourself at a campsite at Minnesota's newest state park now under construction at Lake Vermilion. Thanks to a recent Minnesota Land Trust conservation easement, what you won't see from your campsite are bright lights and intense shoreline development. In fact, nearly two miles of high-quality shoreline habitat are protected, helping to maintain the Lake's clear water and fish habitat, as well as preserving the Lake's legendary "wilderness" character.



JOHN PENNOYER



FITZ FITZGERALD



CHARISE BADZINSKI



It's a comfort, and our kids are right in tune with that." — Roger Strand

LOOKING AHEAD - BUILDING A LEGACY INTO THE FUTURE

A FEW HUNDRED ACRES OF EDEN

Roger and Kay Strand are not farmers. But over the decades, they have experienced the same ebb and flow of the seasons that have passed through the shallow lakes, marshes and prairie grasslands of Kandiyohi County as their farmer neighbors. And their steadfast care for the land is the same as well.

His connection to the land began when Roger bow hunted deer on property that his father bought in the 1950's. In adulthood, Roger and Kay began to purchase surrounding property, and eventually moved to the Stoney Lake farm after their youngest son graduated from high school. Roger put his first wood duck house on Stoney Lake in 1956, and ever since he's developed an even greater interest in wildlife, and a concern about the diminishing amount of habitat available.

In 2003, the Strand put over 300 acres of their property into a conservation easement, followed by 80 more acres a few years later. They also encouraged neighbors to donate conservation easements on their property, resulting in several hundred more protected acres in close proximity.

And so the Strands manage crops of a different type, with time-honored tactics yielding different results. In the place of corn and soybeans, the Strands have planted native prairies and oak savannas. And counter to today's agricultural trends which maximize tillable acres at the expense of wildlife habitat and clean water, the wild, shallow lakes on the Strands' property remain undrained. The result is not measured in bushels per acre, but by a different yardstick: an abundance of migratory birds, nesting wood ducks and sandhill cranes on his and neighboring properties.

Roger and Kay Strand—and others generous people like them—have made a choice to use their limited resources to benefit all of us in Minnesota. To them, leaving a legacy of clean water and abundant wildlife habitat was a tangible goal made real though the restoration and protection of their property.

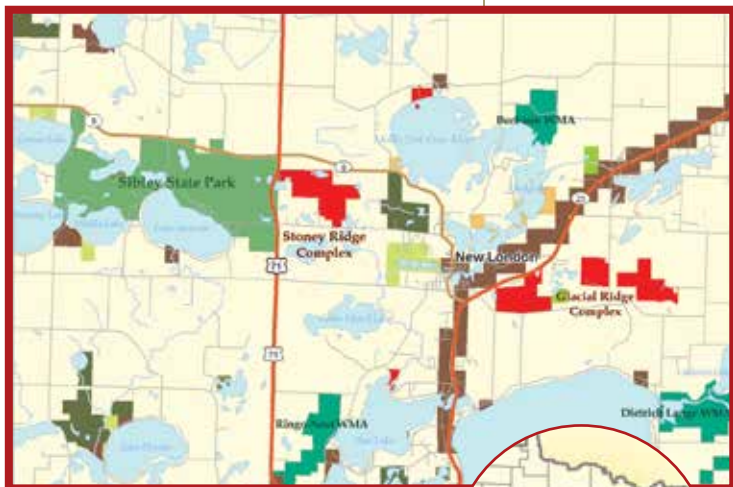
Their vision of re-creating a prairie paradise is what kept Roger and Kay on task for achieving the results they did, while the vision of the Land Trust founders was to help innovative landowners like the Strands protect their hard work for generations to come.

For their efforts, the Strands were honored with the 2012 Award in Philanthropy by the Willmar Area Community Foundation for their volunteerism and their legacy of preserving the land they love through the Minnesota Land Trust.



JOHN LINN, WWW.IG.COM

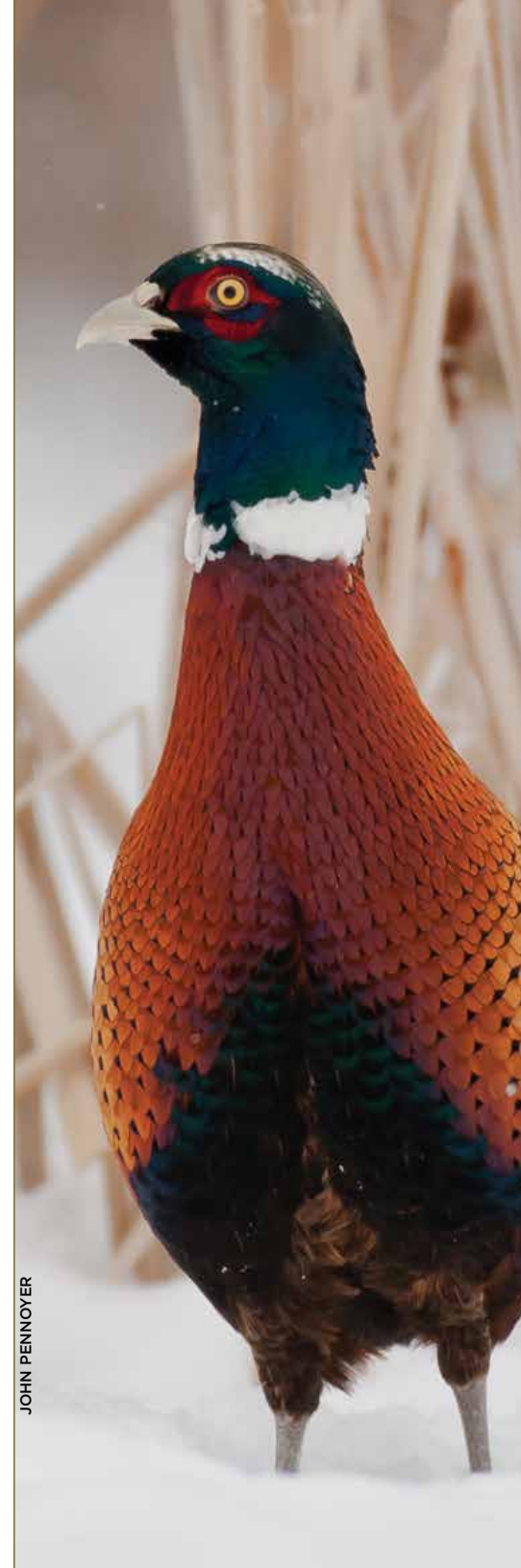
[CONSERVATION EASEMENTS PROTECT ROGER AND KAY STRAND'S STONEY RIDGE FARM PROPERTY FROM DEVELOPMENT.]



- MINNESOTA LAND TRUST PROJECTS
- DNR TRAILS & WATERWAYS LAND
- DNR PARKS & RECREATION LAND
- DNR WILDLIFE MANAGEMENT AREAS
- DNR FORESTRY LAND
- DNR FISHERIES LAND
- WATERFOWL PRODUCTION AREAS
- COUNTY ADMIN/STATE OWNED LAND



JOHN PENNOYER



CHANGING ECONOMICS LEADS TO LOSS OF HABITAT

Beginning with the Soil Bank Program in the 1950's, public policy makers began creating incentives for farmers to put marginal and ecologically sensitive land into voluntary reserves.

That program evolved into the Conservation Reserve Program (CRP) as we know it today. Farmers are paid to set aside undeveloped land that naturally creates habitat for grouse, pheasants, ducks, and other nongame birds and mammals.

Other benefits include reduced soil erosion, slower water runoff, and the elimination of pesticide and herbicide for that acreage. Until recently, this program was an incredible success at providing essential wildlife habitat and cleaner water amidst the corn and soybeans.

However, crop subsidies and record high commodity prices are incenting farmers to put more and more acreage into tilled crops.

Already, 1.34 million Minnesota acres have been converted to row crops since 2008 and the Minnesota Department of Natural Resources warns that with contracts for 620,000 acres of CRP expiring in the next three years, CRP acreage could be reduced by a whopping 42%.

Hunters are already seeing the immediate effects. Kurt Haroldson, a DNR biologist who studies annual variations in pheasant counts noted a dramatic decline, observing that "the counts still remain 51 percent below the 10-year average."

BARBARA LAMOTTE



EDGE OF THE PRAIRIE, CENTER OF WETLAND HABITAT

Recently, the tug of war between tilled acreage and grasslands and shallow lake habitat for duck, pheasant, grouse and migratory bird habitat has shifted decidedly in favor of commodity crop production. Over 150 years ago, about a third of Minnesota – 18 million acres – was prairie. While only 1% of this prairie remains, these grasslands and the associated wetland complexes that dot western Minnesota form one of the most complex and important ecological systems in the Upper Midwest, serving as the backbone for migratory waterfowl and hundreds of animal species.

It is also one of the most threatened landscapes in America.

Although the Land Trust has been active in this prairie-wetland landscape for more than fifteen years, we now have a unique window of time to deepen our commitment and conservation impact. Over the next three years, we will implement an innovative program that incorporates a science-based and cost-effective approach to quickly identify and then permanently protect up to 2,000 acres of the most important grassland and wetland-associated complexes in this part of the state.

To focus our work, we have identified important complexes in this landscape based on where agricultural lands, high-quality habitat, and existing protected areas intersect. And in partnership with the Board of Water and Soil Resources and The Conservation Fund, we have identified unique grassland habitat complexes in the Minnesota River Valley which can provide the greatest return on investment. These complexes include a mosaic of wetland, prairie/grassland and forest habitats, as well as agricultural land.

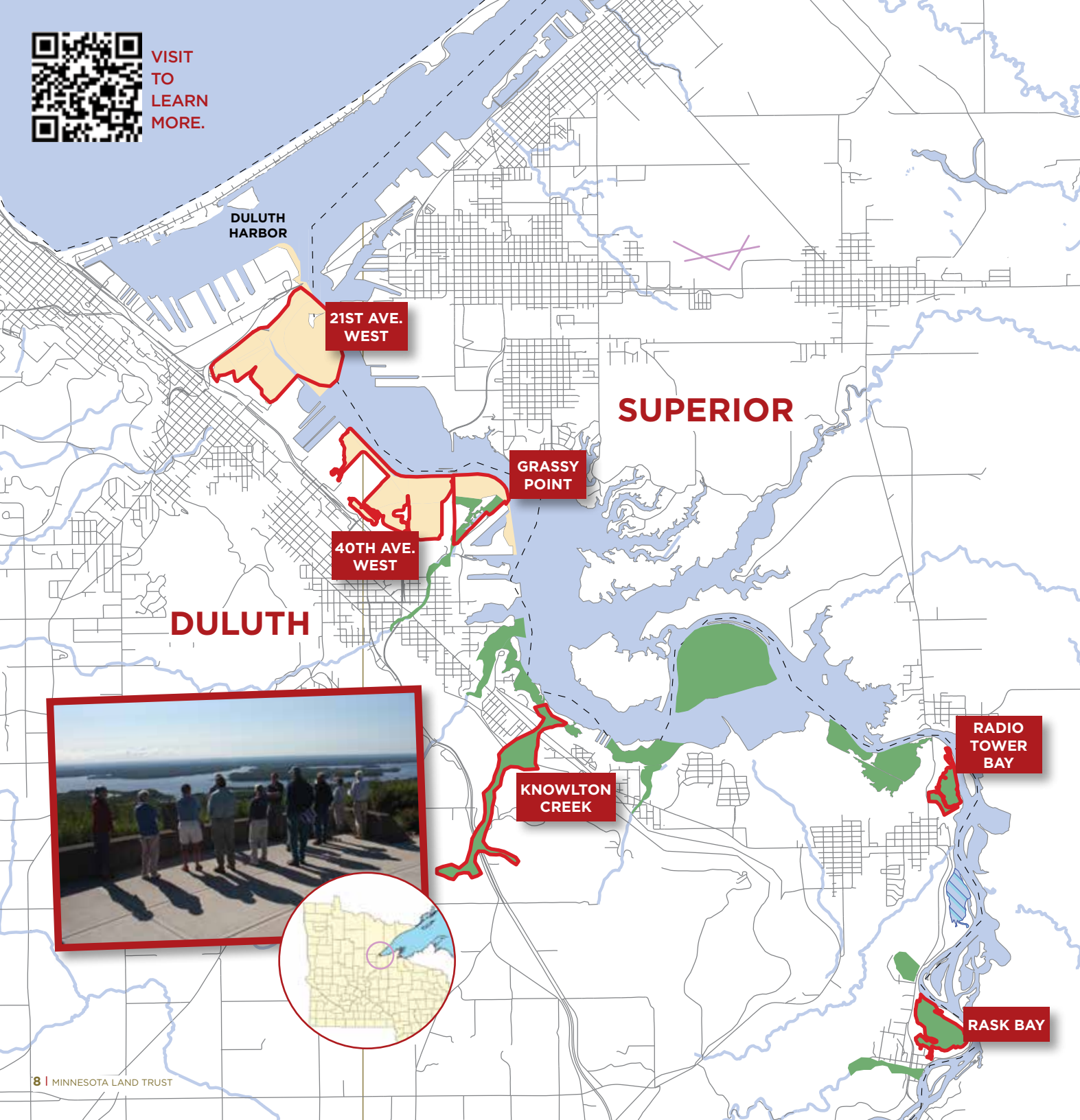
MITCH KEZAR



Visit the Minnesota Land Trust website (www.mnland.org) to learn more about the Wetlands Protection Program and its new "Grasslands for the Future" partnership with the Board of Water and Soil Resources and The Conservation Fund.



VISIT TO LEARN MORE.



ST. LOUIS RIVER ESTUARY:

To many Minnesotans, Lake Superior is the star of the show. From spectacular shorelines we watch, mesmerized, as massive ore freighters and hard-working fishing boats go about their work. Sailboats and kayaks venture out into brisk winds and ocean-like waves.

But if Lake Superior is indeed the star, the St. Louis Estuary plays that underappreciated yet essential role of best supporting actor.

For all its beauty, many of us don't realize that Lake Superior would be nearly lifeless without the nurturing



BARBARA LAMOTTE



MUCH MORE THAN MEETS THE EYE

qualities found in tributary streams and rivers, especially that of the St. Louis River. Yet for more than a century we dumped untreated wastewater and unregulated industrial pollution into the Duluth-Superior Harbor and St. Louis Estuary destroying habitat and severely reducing fish and wildlife populations.

There is good news: With work already completed and more ready in the near future, we have the potential of reversing the seemingly relentless tide of degradation in this 12,000 acre coastal wetland. The goals are simple: drinkable water, edible fish, and swimmable beaches, but getting there isn't easy.

What role does the Minnesota Land Trust play in this enormous and complex project of remediation and restoration?

Our staff has the capacity to manage projects large enough in size and complexity to make a significant impact, and the expertise to collaborate with over 15 different agencies that range from local to federal levels. The Land Trust is steadfast in our commitment to protect Minnesota's most significant natural areas, and we see the St. Louis River Estuary as one of the places we can leave a lasting legacy.

The Land Trust, with your support, can leverage available clean-up dollars and move projects forward at a much greater pace. For example, your support enabled the Land Trust to assist the Minnesota DNR in securing \$3.67 million from the Outdoor Heritage Fund which will result in the restoration of 200 acres of St. Louis River essential fish and wildlife habitat, illustrated in the accompanying map.

Your support also enables on-the-ground work. Earlier this year, the Land Trust removed the remains of an abandoned 19th century railroad bridge from Radio Tower Bay. Next summer several feet of accumulated lumber waste that fills the bay will be removed to improve the quality of fish and wildlife habitat.

Restoration of the entire estuary will take years of work and millions of dollars. The Land Trust is excited to play a pivotal role in marshalling the resources of so many entities into a coherent roadmap that will produce tangible results in the coming years.



AN OVERVIEW OF LAND PROTECTION

Minnesota Land Trust membership support goes directly into land protection across Minnesota, using selection criteria that prioritize conservation values and proximity to other protected lands such as county parks, wildlife management areas and other conservation easements. Fifteen projects were completed in Fiscal 2012. With your help, 1,200 acres of wetlands, bluffland, woodlands and prairie, and over 39,000 shoreline feet are now protected from development.

GLACIAL RIDGE Kandiyohi County

This 57-acre parcel of land is adjacent to two other existing conservation easements which were donated by the same family. The additional property features deeply rolling, forested hills, grasslands, wildlife food plots, and a few small wetlands.

ROGERS FARM Hubbard County

A mix of forest and wetland, this 89-acre parcel is an addition to an existing easement to the west which covers 489 acres of land. The property is located in the Land Trust's Headwater Lakes Critical Landscape and is a component of an identified migratory corridor.

STONY BROOK Benton County

The 39-acre property contains shoreline on three ponds and an intermittent stream, as well as over 1,600 feet of shoreline along a tributary to Rice Lake. Leaving the upland deciduous forest and wetlands on the property undeveloped provides key habitat for a variety of wildlife including fishers, beaver, and sandhill cranes.

The following projects were funded in part by generous support from Minnesota's Outdoor Heritage Fund as recommended by the Lessard-Sams Outdoor Heritage Council (LSOHC).

BURNSIDE LAKE - MILLER ISLAND St. Louis County

One of nine easements on Burnside Lake, this conservation easement permanently protects a 13-acre forested island with 4,436 feet of rocky shoreline. The protected land contributes to the natural forests, shorelines, and the scenic beauty of the nearby Boundary Waters Wilderness Canoe Area and the Superior National Forest.

KNIFE RIVER Lake County

This 76-acre parcel protects over 2,443 feet of shoreline along the Little West Branch Knife River, a designated trout stream that flows into Lake Superior. The property is within one of the most important and visible corridors for migrating songbirds and raptors in the entire Midwest.

LAKE VERMILION - PINE ISLAND ^ St. Louis County

Located on the east end of Vermilion's largest island, this 85-acre project contains old growth red and white pines and white cedar, and lowland areas of old growth white cedar, black spruce, and black ash. This project protects approximately 1,266 feet of shoreline and is adjacent to another easement held by the Land Trust.

ROOT RIVER Houston County <

Set in Minnesota's Bluffland region, this 11-acre property contains restored prairie and hardwood forest as well as a steep bluff that rises nearly 300 feet above the Root River. The property's dramatic topography can be seen from the Historic Bluff Country Scenic Byway, the Root River State Trail, and State Water Trail.



FITZ FITZGERALD

RUSHFORD SAND BARRENS

Fillmore County

This 148-acre project is one of four conservation easements on land owned by a single family. The property includes hardwood forests, native prairie, agricultural land, and approximately 1,536 linear feet of an intermittent stream that flows into the Root River.

SOUTH KAWISHIWI RIVER Lake County

The majority of this 109-acre property is bordered by state owned lands and Superior National Forest. Over 6,300 feet of undeveloped shoreline along the South Kawishiwi River and a mix of forest, wetland and riparian areas on the property support a variety of species in greatest conservation need such as bald eagles, boreal owls, and Canada lynx.

VALLEY CREEK Washington County

One of ten conservation easements held by the Minnesota Land Trust in the Valley Creek Watershed, this 49-acre property includes over 2,000 feet of shoreline along Valley Creek, one of the few remaining trout streams in the Twin Cities metro area that naturally reproduces trout.

Completed in partnership with and funding from the Washington County Land and Water Legacy Program.

ARMSTRONG FARM Washington County

This 40-acre property adds to 129 acres that this landowner previously protected with conservation easements held by the Land Trust. The property includes rolling grassland and woodland with wetlands and over 2,000 shoreline feet along Farney Creek, which flows through the adjacent Lake Elmo Regional Park.

The following projects were funded in part with the generous support of the Minnesota Environment and Natural Resources Trust Fund as recommended by the Legislative-Citizen Commission on Minnesota Resources (LCCMR). Currently 40% of Minnesota State Lottery proceeds are dedicated to building the Trust Fund and ensuring future benefits for Minnesota's environment and natural resources.

CROW RIVER Kandiyohi County

This 30-acre property includes wetlands, grasslands and woodlands with approximately 2,651 feet of shoreline along the Middle Fork of the Crow River. The wetlands on the property are a key habitat for species in greatest conservation need such as the willow flycatcher and the tiger beetle.

EMMANS FARM Anoka County

This 80-property, along with the two previously protected Emmans Farm tracts, has been in the Anderson family since 1866. The property is comprised of a mix of wetland types interspersed with hardwood forest, supporting a large array of terrestrial and aquatic species.

LITTLE PINE RIVER Crow Wing County

This 88-acre property contains 3,100 feet of shoreline along Little Pine River and 2,340 feet around an open wetland pond, providing habitat for a variety of species in greatest conservation need, including bald eagles, northern goshawks, Blanding's turtles, and wood thrushes.

SCANDIA Washington County

This 294-acre easement contains agricultural land, grasslands, woodlands, wetlands, and a 1-acre pond. The woodlands, wetlands and grasslands on the property are key habitats for a variety of species in greatest conservation need, including bald eagles and American badgers which have been observed on the property.



THE PEOPLE WHO MAKE IT HAPPEN

The heroes of Minnesota land conservation are not just those of the past. This year the Minnesota Land Trust recognized champions of land conservation at our annual “Treasured Places” celebration held at Duluth’s Spirit Mountain.



[CLOCKWISE]

Commissioner Tom Landwehr and John Lindgren of the Minnesota DNR accept the 2012 Partner of the Year Award for its decades-long commitment to securing the recovery of the St. Louis River.

Photographer Craig Blacklock and his wife, Honey, protected their North Shore property adjacent to Split Rock Lighthouse. Dedicated conservationists, they are in the process of protecting another property on Moose Lake.

Pillager, Minnesota residents Al and Linda Larson faithfully monitor several properties each year. Their work goes back to the early days of the Land Trust, and provides tremendous continuity between landowners and the stewardship office.



VOLUNTEER MONITORS

EACH AND EVERY PROPERTY IS MONITORED ANNUALLY. WE RELY ON OVER ONE HUNDRED TRAINED AND CERTIFIED VOLUNTEERS TO HELP US ACCOMPLISH OUR STEWARDSHIP MISSION. MANY THANKS TO THESE HEROES OF LAND CONSERVATION.

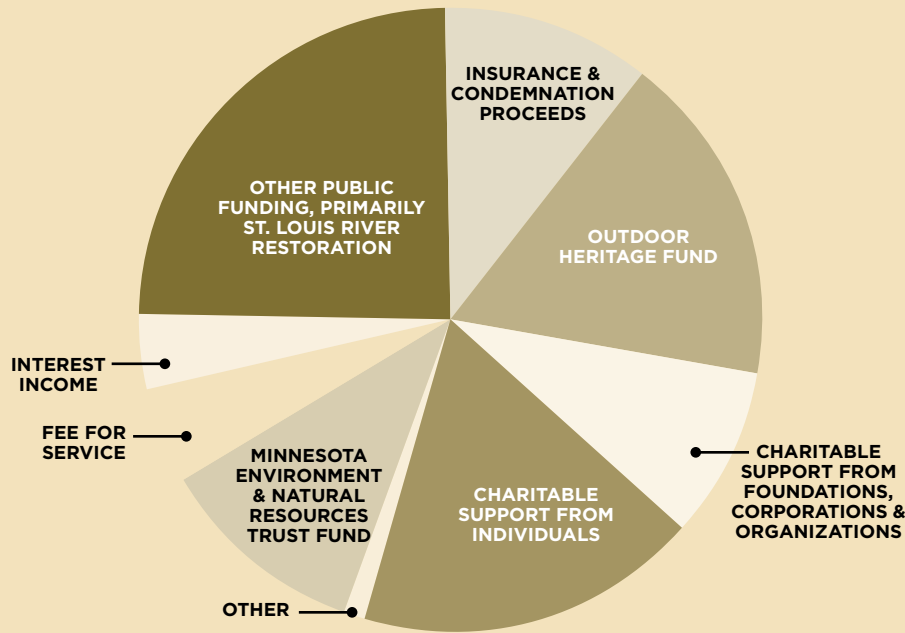
VOLUNTEERS

The Minnesota Land Trust thanks the many individuals whose volunteer efforts extend our ability to protect Minnesota’s natural and scenic heritage.

Gianna Portman Amis | Caleb Arika | Todd Armbruster | Robert P Axtmann | Merrily Babcock | Polly Bayrd | Tom and Ann Beaver | Nancy L. Berlin | Lynnette Boyd | Kirk Bremer | Paul Brown | Mary Ann Browning | Mike Burnett
 Mary Canino | Vanessa Carneiro | Thomas Clapp | Donald C Conner | Julia Coombs | Jean Curtis-Neitz | Steve C DeLapp | Bob Djupstrom | Bill Durkin | Jody Elmasry | Claudia Egelhoff | Bill Fahmney | Jenna Fletcher | Brad Fuller
 Nona Goertz | Edward Gordon | David E. Grunzke | Ralph Gundersen | Gary Gustafson | Kendall Hains | Thomas and Marcie Hamel | John and Jean Hedberg | Carter and Florence Hedeem | Ellen & Mike Heneghan | Wendy Hill
 Mel and Ellen Hintz | Steve Hobbs | David M Jacobson | Everett Janssen | Clifford Johnson | Ken “Jug” Johnson | Brian Jungels | Shelly Kafka | William S Kalseim | Emily Kampa | Tara Kelly | Jonathon Kemske | Dag Knudsen
 Dennis Koenig | Gene Kremer & Karen Dingle | Tom Kroll | Ryan & Jenny Kutter | Betsy Lake | Mike LaMotte | Pam and Roger Landers | Linda and Al Larson | Steve Lee | Richard and Vickie Lemanczykafka | Linda Liestman
 Ellen Lowery | Bonnie Maffitt | Bill Majewski | Norma Malinowski | Michelle Martin | Peter Martin | Diane McGann | Bryan McGinnis | Kim Ellis-McKigney | Joan Meierotto | Patrick Miller | Ran Miner | Dennis and Bonita Morris
 Melody Morris | Rick Musser | Terri Nelson | Mary Newstrom | Karen Odash | Colleen O’Dell | Abby Olson | Anthony Morley and Ruth Anne Olson | Don & Marilyn Olson | Cathy Olyphant | John and Linda Peck | Bret Pence
 Jim Perrett | Larry Phillips | Ned Phillips | Ed Rasmussen | Deena and Steve Reisman | Cecelia Riesenberger | Mark Riverblood | Lynne Rogers | Joe Rokala | Charles L. Rose | David Rothstein & Sharon Akimoto | Jean Rovelstad
 Bethany Sagsveen | Kelly Scanlan | Robert Scheierl | Hank J Scheinost | Mike and Roxanne Schlanser | Bruce Schoenberg | Lee Scholder | Greg Schweser | Teresa Thews and Paul Scobie | Charles and Betty Selander
 Jim Setzer | Judith Shepard | Brad Shinkle | Steve Sicheneder | Erika Sitz | Joan Smith | Greg Solberg | Paul Spreitzer | William Steele | Sue Steinwell | Tom Stoa | Kate Stone | Libby Stone | Lorrie Stromme | Erik Strup | Bill Sullivan
 Joseph Taatjes | Hannah Texler | Gery A Then | Ann C Thies | Herm Urbasic | Tony Walzer | Dennis Whelpley | Dennis Scherber | Judith and Guy Williams | Ruthann Yaeger | Susan and Jon Yeager | Dunn Yoshitani | Will Zalaznik

FINANCIAL SUMMARY

The Minnesota Land Trust is committed to strong fiscal health and socially responsible investments. The financial summary that follows is based on the complete financial audit which was conducted by HLB Tautges Redpath, Ltd. Their full report is available online at www.mnland.org or by contacting the Land Trust at 651-647-9590.

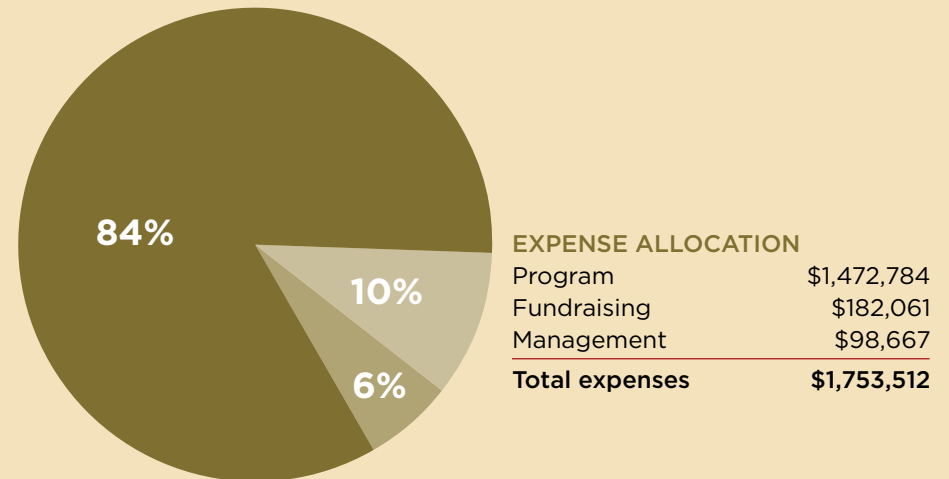


FUNDRAISING & REVENUE

Charitable support from individuals	\$329,271
Charitable support from foundations, corporations & organizations	\$163,766
Outdoor Heritage Fund	\$314,129
Minnesota Environment & Natural Resources Trust Fund	\$195,217
Other public funding, primarily St. Louis River Restoration	\$448,042
Interest income	\$71,053
Fee for service	\$95,250
Insurance & condemnation proceeds	\$199,060
Other	\$15,250
Changes in fair value of investments	(\$136,370)
Total support & revenue	\$1,694,668

BALANCE SHEET FOR THE FISCAL YEAR ENDING JUNE 30, 2012

Assets	2012	2011
Cash & Cash Equivalents	\$3,810,326	\$3,876,348
Net Furniture & Equipment	\$10,797	\$21,684
Land Held for Resale/Conservation	\$24,000	\$9,000
Total Assets	\$3,845,123	\$3,907,032
Liabilities & Net Assets		
Accrued Payables	\$54,032	\$57,097
Total Net Assets	\$3,791,091	\$3,849,935
Total Liabilities & Net Assets	\$3,845,123	\$3,907,032



THANKS TO YOU, WE'RE PROTECTING MINNESOTA'S NATURAL AND SCENIC HERITAGE.

ANNUAL GIFTS

Gifts that support operations, special projects and long-term stewardship of protected lands. [Donors from July 1, 2011 - June 30, 2012]

GIFTS OF LAND OR CONSERVATION EASEMENT

John and Barbara Anderson
Thomas and Jeanne Armstrong
John and Margaret Daley
Ely Side, LLC
Roger and Joyce Heinisch
The estate of Judith Jones
June Keibler
Gordon and Janice Klein
Todd and Diane Paffrath
Arlyss Peterson
Derrick Phillips
Eugene and Elizabeth Pundsack
Dan and Cynthia Rogers
Carl Smith
Graden and Rebecca West



\$1,000 and above

Drs. Johannes and Martha Aas
Richard Allendorf and Paul Markwardt
Howard and Camilla Alton
Allan and Ginna Portman Amis
Prospect Creek Foundation, a family
foundation of Martha and Bruce Atwater
Janalee Aurelia
John Baird
Carroll C. Brooks through the Greystone
Foundation
Kate Budd
Colleen Carey and Pam Endean
Austen Cargill
Gary Carlson and Jane Howard
Theodore Chien
William Davidson and Claire Olson
Wendy and Doug Dayton
Mary Lee Dayton
The Edward Dayton Family Fund as directed
by Sherry Ann and Edward Dayton
Toby and Mae Dayton
Elizabeth DeBaut and David Hartwell
through the Open Door Foundation
Steve DeLapp
EcoTrust
Timothy Edman
Paul M. Egeland
Charles A. Erickson
Barb and Jim Farrell
Ben and Becky Field
Mr. and Mrs. Litton Field
David and Claire Forsberg
John and Martha Gabbert
Alfred Gale
Bob and Rosemary Geist
Nancy Gibson and Ron Sternal
David and June Guckenberger
Chuck Malkerson and Carolyn Hall II
Lucy Hartwell through the Smikis Foundation
Roger and Joyce Heinisch

Jill Conda and Mark Jacobson
Charles R. Johnson
Brian Jungels
Kris and Christine Larson
Brad Fuller and Libby Lincoln
Nivin MacMillan
Siri and Bob Marshall
James Mayer and Rochelle Gunn
Dick and Debby McNeil
Chuck and Melinda Moos
Gerald Morsello and Elaine Rees
James and Judy O'Reilly
Todd and Diane Paffrath
Louise B. Plank
Willie and Markell Rahr
Tom and Laura Rasmussen
Dan and Cynthia Rogers
John Roxbury
Jack and Pam Safar
Jean Schubert
Adam Schwartz-Lowe
John and Marilyn Fritz Shardlow
Dean V. Skallman
Wendy Sommer
Don and Sonja Steinke
Sue Steinwall
Robert and Bonnie Thomsen
Terry and Mary Tomann
Lucille Trulson
Susan and Steve Wilson
Margaret and Angus Wurtele
Ron and Diane Yanish through the
Yanish Family Donor Advised Fund of the
Rochester Area Foundation

\$500 - \$999

Robert Albright
Paul G. Anderson
Caroline M. Anderson
Eric S. Anderson
Kurt Apfelbacher
Jon and Metta Belisle
Kerrie Blevins and Michael Walstrom
William Blum and Susan Brown
Dave and Ann Bucheck Fund of
The Saint Paul Foundation
Jeff and Susan Danielson
Joan L. Dayton
Leonard and Beth Dayton
Tim and Gayle Devries
Susan Heegaard and Gary Findell
Richard and Susan Goldman
Wolfgang and Martha Greiner
Randy Lake and Colleen Keough
Harriet Ludwick
Peter Maritz
Brian Mark
Lee A. Markell
Jerry Martin
Gary E. Nichols
Anthony Morley and Ruth Anne Olson
Julie Perrus
Melissa Peterson
Jorg and Angie Pierach
Russ and Kathy Rhode
William and Lynne Rogers
Eugene and Jeanne Rondeau
Gena and Steve Setzer
Robert Sivertsen, through the Charles
A. Weyerhaeuser Memorial Foundation
Dick and Ella Slade
Timothy and Mary Wilson
Steve and Beverly Wolf
Dunn and Laura Yoshitani



\$250 - \$499

Walter and Donna Abramson
 Thomas W. Anderson
 Gordon and Josephine Bailey
 Wendy and Pete Benson
 Joyce Bish
 John Borgert
 Priscilla and J.S. Braun
 Elaine and Foster Cole
 Charles W. Crosby
 Joan R. Duddingston
 Charles and Anne Ferrell
 John and Sue Foster
 David Fransen
 Jim Dorsey and Dee Gaeddert
 Curt and Pat Hadland
 Jeff and Lucy Heegaard
 Dr. William and Elizabeth Heegaard
 Ross and Ruth Heilman
 Robert Hemmingson
 Jennifer G. Hines
 Kevin Hinze
 Tom and Libby Horner
 Lorraine Jirele
 Sharon Johnson
 Martin and Esther Kellogg
 Dean and Terry Kennedy
 Dag Knudsen
 Charles and Hope Lea
 JP Little and Lynn Mattson Little
 John and Mary Ellen Lundsten
 Clara Ueland and Walt McCarthy
 L. David Mech, Ph.D.
 Richard and Joan Meierotto
 Susan S. Meyers
 Clint and Patty Miller
 Mary Miller
 David and Karen Minge
 Heather Muster
 Jerry and Ruth Narr
 Delano R. Nelson
 John and Linda Peck
 Dwight and Marjorie Peterson
 Peter and Lawny Pflaum
 Anne and Brian Purrington
 Craig and Mariana Shulstad
 Bruce and Jane Scharding Smedley
 Carla J. Smith

Dr. Roger and Kay Strand
 Loren E. Swanson
 Harold Teasdale
 Ann C. Thies
 Bonnie and Gary Van Erp
 Lee Wales
 Laurel Westrom
 Frank and Frances Wilkinson
 Richard M. Williams
 Eleanor and Fred Winston
 Michael Wolsted
 Cindy Zitzmann

\$100 - \$249

Peggy Adelmann
 Doug and Diana Anderson
 Evan and Nancy Anderson
 Shirley and Charles Anderson
 Todd Armbruster
 Thomas and Jeanne Armstrong
 Tom J. Arneson
 Dave and Carla Bahls
 Michael and Margaret Bahr
 Bob and Ruth Baker
 Sherrie and Brad Beal
 Robert E. Becker
 Dan Michaels and Michelle Blenkush
 Thelma Boeder
 Karen L. Bohnert
 Mark J. and Susan Bonitz
 Will and Margee Bracken
 Carol and Conley Brooks, Jr.
 Paul Brown
 Dick and Vera Brown
 Bob Bruce
 Erica Buffington
 Rebecca Bundschuh
 Ronald R. Burley
 Michael and Susan Burnett
 William Burns
 Frank and Kristi Cadwell
 Brian and Jaclyn Carey
 Cindy A. Carlsson
 Nancy Cassano
 Michael Shouldice and Patricia Christie
 Sharon and Bill Clapp
 Bob Close and Cindy Peltier
 Donald C. Conner
 Carmen K. Converse
 Kenneth and Kimberly Corey-Edstrom
 Brian and Sherry Cornwell
 Tom and Ellie Crosby, Jr.
 Dave and Di Dawkins
 Steve and Nancy Deppe
 Charles and Jackie Dietz
 Katie and Bryan Donald
 Erika Donnor

Jane Prohaska and William Donohue
 Tom Duffus
 Robert and Bette Dunn
 David and Susan Egloff
 Lee C. Ehmke
 Patrick Anderson and Kristen Erickson
 Jill M. Fagerstrom
 Wally and Cecy FASTER
 Margaret Fawcett
 Fitz and Heather Fitzgerald
 Owen and Virginia Flygare
 Rodney and Susan Foss
 Flavia Franta
 Craig O. Freeman
 William and Marna Freeman
 Bayard T. French
 Carol and Ian Friendly
 Marjorie W. Frost
 Marna W. Fullerton
 Laurel Gamm
 John and Carol Gehrman
 Mark Gilbert
 Amanda Giliotti
 Barbara L. Glaser
 Mace and Audrey Goldfarb
 Edward and Eileen Gordon
 Wilfred and Justine Gould
 Donald Grant
 Janet and John Green
 Jan and Kevin Gregerson
 Matthew J. Grigal
 Ralph and Nancy Gundersen
 Ken Haberman
 Marlene S. Haider
 Thomas and Marcie Hamel
 Rodney and Diana Hanson
 Kent and Judy Harbison
 Margaret S. Harder
 Jane Harper
 Emily V. Harris
 Mary and Louis Hauser
 Susan L. Hawkinson
 Van and Elizabeth Haw
 John and Jean Hedberg
 Carter and Florence Hedeon
 Mike and Karel Helgeson
 Marilaurice Hemlock
 John and Diane Herman
 Lee Herum
 Deborah Hinze
 Leonard and Deleanore Hinze
 Randall and Pamela Hinze
 Timothy Hinze
 Thomas and Beatrice Hoffmann
 Steve and Amy Isaacson
 Bernard and Frances Jirele
 Mark and Peggy Jocelyn

Betty and Clifford Johnson
 Bruce and Shari Johnson
 Craig Johnson
 Kenneth and Margaret Johnson
 Phillip and Miriam Johnston
 Charles R. and Sally B. Jorgensen
 Margi Preus and Arno Kahn
 John and Lynda Kern
 Joseph R. and Kathleen Kingman
 Lynn and Marie Kistler
 Dennis Koenig
 Margaret A. Kohring
 Donald Kraybill
 Michael and Barbara LaMotte
 William and Marilyn Larson
 Maureen Steinwall and Michael Lavelle
 Jane Lawrence
 Charles and Anne Leck
 Steve Lee
 Sally and Richard Leider
 Renay and Gerry Leone
 Douglas and Jennifer Lewis
 Edward and Beth Loftus
 Deborah J. Loon
 William Ramsden and Doreen Lynch
 William S. Lyon
 William and Martha Marchand
 Dorothy Mason
 Nancy Mason
 Bruce McBeath
 Steve Mattaini and Rita McConnell
 Bryan and Karin McGinnis
 Daniel McInerny
 Jack and Terri McKeon
 E. Anne McKinsey
 Joyce Mellom
 Michael Mergens
 Daniel Jurgens and Ann Merrill
 Christopher Meyer
 James and Patricia Miller
 Ran and Beth Miner
 Robert and Lucy Mitchell
 Jon Montgomery
 Bonnie Morris
 Bonnie E. Nelson
 Stanley Nelson
 Anna Newton
 Christine O'Bert
 Rita M. O'Connell
 John and Yvette Oldendorf
 Mark Ten Eyck and La Raye Osborne
 Cheryl Paullin
 Bret and Karen Petersen
 Brian and Joyce Peterson
 Silas and Katharine Peterson
 Sally B. Polk
 Alan Polsky

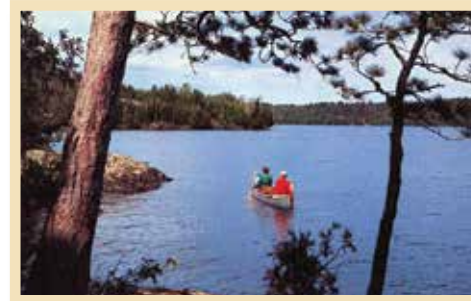
Walter and Harriet Pratt
 Gerry and Sharon Proskin
 Lynn E. Quenemoen
 Jim and Joan Rataczak
 Robert and Jean Raz
 Peter Bachman and Janet Rice
 Phillip and Jane Rollins
 William and Diane Rutherford
 Eric Rutten
 Dennis M. Ryan
 Jerry and Patricia Ryan
 Michael and Sally Salter
 Michael and Christine Sandusky
 Steve and Karen Sanger
 Kelly Scanlan
 Hank J. Scheinost
 C. Perry Schenk
 Mike and Roxanne Schlasner
 Sally Schroeder
 Teresa Thews and Paul Scobie
 Dorene Scriven
 Jerry Seck
 Charles and Judith Shepard
 Stanley and Lucy Shepard
 Steven and Jill Sicheneder
 Sharon and Tom Simpson
 Raegan Sipe
 Paul and Erika Sitz
 Kenneth and Janice Skold
 John and Colleen Slack
 Barbara A. Smith
 Rick and Cheryl Snyder
 Linda and Steve Soderholm
 Leif and Jeanne Solberg
 Mark and Patricia Sontag
 Michael Sowada
 Margaret Spear
 Jim and Carol Stark
 Jane A. Starr
 William and Carol Steele
 Judith Steltzner
 Charlotte Stephens
 Gary A. Strandemo
 Mark and Joan Strobel
 Rolf and Patricia Svendsen
 Donald and Virginia Swanson
 Donald and Wildie Swanson
 Rachel Hampton and Dariusz Szewczak
 Joseph Taatjes
 Mary Staples Thompson
 William L. Tilton
 Anna Lisa Tooker
 Robert Turkington
 Delon and Gail Underbakke
 Michael C. Vessels
 Raymond and Lynette Vlasak
 Robert and Mavis Voigt

Wendy Walker
 Wayne and Katherine Walters
 Thomas and Shellie Wappes
 Ann Warner
 Nancy and David Warner
 Lyle Wedemeyer
 Dale E. Weick
 Glenn Shoemaker and Nancy Weiss
 Dennis P. Welsch
 Paula Westmoreland
 John and Kelly Wheaton
 David and Beverly Wickstrom
 Katharine D. Widin
 Michael and Jani Wiebolt
 Charles and Victoria Willcox
 Mary Shedd and Steven Wilson
 Molly and Bill Woehrlin
 John and Eleanor Yackel
 Ken and Izumi Yoshitani

Up to \$99

Felicia Ablor
 Phyllis Abrahamson
 Raylene Ahlgren
 Charlotte Amland
 Todd Andersen
 Chel Anderson
 Dean and Janet Anderson
 Frani and Mark Anderson
 Gary Anderson
 Gayle Anderson
 Grant Andreasen
 Cindy Angerhofer
 Nancy Appel and Mitchell Sadoff
 Bob and Patricia Astrup
 Debra Ayres
 Alfred and Donat Backes
 Austin J. Baillon
 Georgene Baker
 Richard Baker
 Guy Bartolain
 Paula Barton
 William Barton
 Joel Bartos
 David Bastien
 Gibson Batch
 Janis Batt
 William and Nancy Bauer
 Bill and Shirley Baxter
 Cole Becker
 George and Donna Beebe
 Dorothy Belgium Knight
 Karl-Edwin Bell
 Bob and Mary Belongie
 Glenn and Margaret Bendickson
 Denise and Jerry Benecke-Sylvestre
 Robert Benjamin

Catherine Benner
 W. Bruce and Carol Benson
 Craig Berdan
 Brenda Berglund
 Alan Bergman
 Michael D. Bernatz
 Edwin Berniard
 Michael and Ruth Bettendorf
 Marion and David Bickford
 Bob Bjork
 Judy Bjorke
 Thomas and Diane Black
 Brad Blackett
 Susan Blom
 Charles and Victoria Willcox
 Edward and Connie Bloom
 Marcy Bode
 Cassandra Bornetun
 Kim Bovee
 Susan Boyd
 Joanne and John Boyer
 Raymond Boyle
 Nancy and Steve Braker
 Norma Brantner
 Nathan and Rachel Breitenbach-Dirks
 Maria Brittle



Rodney and Marilyn Broding
 Elizabeth Brombach
 Greg and Jan Brown
 Jane Brugman
 Bill and Ann Bruins
 Karl and Ruth Brunner
 Roland and Coral Buchman
 Matthew and Theresa Buley
 Jeffrey Byers
 Mary Cariveau
 Dave Carlson
 Richard and Margaret Carman
 Lindsey Carr
 Cary Carson
 Mr. and Mrs. James Cashman
 Tony Cecin
 Jack and Elizabeth Cedarleaf

James Risser and Tereza Cervenka
 William Chalk
 Elizabeth and John Challas
 Steve and Susan Chaplin
 Paul Christensen
 Katie Clapp
 Samuel Zins and Jerilyn Clark
 Carolyn Clements
 Michael and Janet Conway
 Denis and Nancy Cornell
 Connie Hilliard and Fran Coyne
 John and Nina Crittendon
 William and Kathleen Croke
 William A. Crosley
 Paul Dahlen
 William and Mary D'Amour
 Bruce and Mary Davis
 Malcolm B. Davy
 Thomas Deans
 David Schaenzer and Louise Delagran
 Bret Pence and Laura Delaney-Pence
 Robert Delaune
 Mrs. Robert Dengler
 Paul and Stephanie Devine
 Marcus Dilliard
 Larry and Rita Donlin
 Jerry Drowelow
 James Driscoll
 Wanda Driver
 Anita Duckor
 Joel and Sandra Dunnette
 Thomas and Helen Dwight
 Laura Eash
 Earl and Margaret Eberhardt
 Janet Ebersold
 Kathleen Ebling
 Mark Eckman
 Susan Eckstrom
 Thomas Edman
 George Ehrhart
 Larry Ellis
 David Elowson
 Diane Erdmann
 John and Marlee Eret
 Charlene Erickson Knox
 Charles and Patricia Eversman
 Lu Ann and Roger Eye
 Kimberly Fadell
 Ellen Fahey
 Stewart Corn and Ellen Ferrari
 Angela Fiero
 Barbara Malkerson Fischer
 Jerry Fitzgerald
 Elizabeth Fleming
 Joanne Flugstad
 Jay Foley
 Laurie Fontaine



RAINY LAKE

Gifts to this fund support land protection activities in the Rainy Lake area.

Anonymous
 Paul Anderson
 Michael and Katherine Bolles
 Linda Causey
 Christopher and Julie Causey
 Thom and Kathleen Crimans
 Kim and Deborah Embretson
 Jerold Lee Graham
 The Hawley Family Foundation
 Anne and Ken Helms
 A.C. Hickox
 Elizabeth Hyatt
 Larry and Jo Kallemeyn
 Kurt and Mary Lysne
 Jim and Sally Martineau
 Karen Nelson
 Anne Newhart
 Bruce & Linda Scott
 John and Jennifer Shank
 Carolyn Siebert
 Wallace and Rose Simpson
 Harry and Virginia Sweatt
 Kathy Sylvia
 Phillip and Carolyn Wallis, in honor of
 Sam White, Anne Siebert and Russ
 Siebert

WWW.BRYANHANSEL.COM

Carol Fortier
 Sharon Foss
 Douglas and Peggy Franchot
 Gordon and Marjorie Franklin
 Roger and Carolyn Fransen
 Andrew Froehle
 David and Shirley Froyd
 Jane Fuller
 Ronald Funes
 Lynn Galle
 Dale and Luella Gannarelli
 Kevin and Barbara Gardiner
 Linda Gawthrop
 Robert Brodie and Debra Gerads-Brodie
 Bruce and Christine Gilbertson
 Richard Gilmore
 John and Cindy Gilpin
 Paul Glader
 Muriel Gorham
 Sandra Gould
 Thomas and Mary Gover
 James Gray
 Dave Gredzens
 Eric and Nancy Greenfield
 Jean Greenwood
 Brian Grivna
 Annabelle and Ervin Gross
 Thomas and Mary Gross
 Joanne Groten
 Ann & Len Guggenberger
 Allan and Barbara Gulden
 Nick and Geri Gulden
 Carl and Cynthia Haensel
 Eric Hageman
 Mark Hagley
 Herb and Jean Halverson
 Dave Hammer
 Kenneth and Mary Handt
 Keith Hanzel
 Jesse Okie and Mary Harrington
 Theodore Hartwig
 Dan and Terry Hasenstein

Jennie Hakes and Steve Hawrysh
 Mary Hayes
 Robert and Henrietta Hayward
 Deborah Hedburg
 Wallace and Barbara Ann Heidbrier
 Betty Hein and Willard Everett
 Jim and Maureen Henderson
 Ellen and Mike Heneghan
 Sheryl Henly
 Mary Hennies
 John and Julie Henricksson
 Evelyn Henry
 Ken Heruth
 Barbara and Leslie Hexum
 Warren High
 John W. Hoch
 Peter Hoff
 Robert Holly
 Julie Holmen
 Deborah Holte
 Dale Homuth
 Pauline Hoover
 Robert and Judith Hornick
 George and Cheryl Howe
 Ruth Howe
 Tom and Alice Howe
 Mark Huber
 Ross Huelster
 Mary and Robert Hullsieck
 David and Mary Hulse
 Beverly Murphey and John Hung
 Lee and Patricia Hutchins
 Robert Hyatt
 Matthew Hyle
 Eva Hyvarinen
 William and Jane Iacono
 Helen Jackson
 David Jacobson
 Dorothy Jacobson and Ann Henzgen
 Peggy James & Associates
 Mike Jersek
 Jeanette and Ronald Johannsen

Catherine Johnson
 Craig Johnson
 Douglas and Jean Johnson
 Douglas and Patricia Johnson
 James S. Johnson
 Kay Kramer and Sally Johnson
 Lowell and Andrea Johnson
 Marianne Johnson
 Maynard and Kristine Johnson
 Rodney Johnson
 Rodney and Lillian Johnson
 Theodore Johnson
 William Johnson
 Lorna Johnston
 Wanelda and Myron Jorissen
 Andy Joyce and Kristin Raab
 Christopher Julin
 Winston Kaehler
 Jan Kaeter
 Fred and Susan Kaiser
 Jamie Kaiser
 Keith Kalenda
 Amy Kampt
 Arnold and Shirley Kaplan
 Tecla Karpen
 Mary Jo Kasten
 James Moudry and Carole Kastigar
 Patricia Keefe
 Fern Keniston
 Charles and Renee Kenow
 Thomas and Anna Kieselbach
 John and Jane Kimball
 Cyrus and Norma Kingsberg
 Diane Kirchmann
 Ralph Kjorlien
 George and Mary Lou Klacan
 Julie Klassen
 Marie Knowlton
 Amy Knox
 Paul and Carol Knuti
 John and BJ Kohlstedt
 Rick Kollath



Sharon Kolle
Heather Koop
Sandra and Dan Korthuis
Tom Koshiol
Luanne Koskinen
Caroline Kostroski
Dennis Kresal
Andrew and Jayne Krim
Blaine Krogh
Neil and Deb Krueger
Kate and John Kubiak
James Kugler
Dustin and Karen Kuklenz
Laura Kundrat
Darlene and John Lacey
Joseph and Gwendolyn Ladner
Douglas and Betsy Lake
Virginia N. Lake
Gertrude Lambert
Etta Lambright
Pam and Roger Landers
Marjorie Lane
Mike Lange
Richard Lareau
Colles Baxter Larkin
Daniel and Gaye Larson
James Nyberg and Deborah Larson
Lori Larson
Patricia and Gregory Larson
Rolfe and Barbara Leary
Tracy Leavenworth
Paul and Sharlene Legenhausen
John and Susan Lenczewski
Bill and Pearl Lieb
Linda Liestman
Pamela Lindberg
Alan and Lori Lohman
David and Marcia Lothner
Major Alfred E. Lounsbury
Scott and Sara Lounsbury
Randall Ludtke
Iris Lueck

Elizabeth Lund
Nancy Lund
Juliann Luse
Gary Lyall
John and Barb Lynskey
Robert and Gretchen MacCarty
James and Jennifer Mack
Kathy Maleck
Sherman Malkerson
Jennifer Mann
Lois Mann
Jamie and Michael Manning
Joe and Marsha Mansur
Laurence and Karin Margolis
Lynne and Howard Markus
Amber Martin
Dave Martin
Susan and Mark Mason
Boyd and Betty Mast
Ronald Matross
Calvin and Deanna Mattson
Timothy and Patricia Mauren
Lyndon Mc Murtry
Elizabeth McCambridge
John McDonald
Maridee McEvoy
Richard and Tamara McGehee
Mary and Daniel McInerny
John Sievers and Joan McIntosh
Dorothy McMichael
Laurel Shaffer Mech
Kay Mehl
John and Patricia Meinert
Sharon Meister
Rachel Melis
Nicole Mettler
Peter and Jacqueline Meyer
Jeanne C. Mielcarek
Barbara Miller
Paul Miller
Patricia Mills
John J. Mooty

CORPORATIONS, FOUNDATIONS & ORGANIZATIONS

514 Studios
Alexis Bailly Vineyard
American Bear Association
Archie D. and Bertha H. Walker Foundation
The Athwin Foundation
Bailey Nurseries
The David Winton Bell Foundation
Blue Cross Blue Shield of Minnesota Matching Grants Program
Capital Management
Community Shares of Minnesota
Cookie Cart
The Cornerstone Group
Dellwood Foundation
Duluth Superior Area Community Foundation
Ely Side, LLC
Enbridge Energy Company
enXco, Inc.
Ernest C. Oberholtzer Foundation
Fredrikson & Byron P.A.
The Fredrikson & Byron Foundation
Fulton Brewing
Greystone Foundation
Hardenbergh Foundation
Harriet Brewing
The Hawley Family Foundation
Herman Appraisal Services, Inc.
IBM Corporation Matching Grants Program
Krueger Christmas Trees of Lake Elmo
Lakewood Berry Farm
Larkin Hoffman Daly & Lindgren Foundation
Leech Lake Brewing Company
Liberty Diversified International
Lloyd K. Johnson Foundation
MAHADH Fund of HRK Foundation
Margaret Rivers Fund
The McKnight Foundation
Microsoft Club Bing
Microsoft Matching Gifts Program
Minnesota Brokerage Group
The Morsman Family Foundation
Northern Waters Smokehaus
Park Midway Bank
Patrick and Aimee Butler Family Foundation
Peason's Candy
Plum Investment
Quaker Hill Foundation
Rahr Foundation
Rahr Malting Company
REI
The Red Stag Supperclub & Owner
Kim Bartmann
Shakopee Mdewakaton Sioux Community
Smikis Foundation
Stantec Consulting
Sturdiwheat
Sunrise Community Bank
The Toro Foundation Matching Grants Program
Thomson Reuters Employee Giving Campaign
U.S. Bancorp Foundation
Van Sloun Foundation
Vinaya Foundation
Wells Fargo Foundation Matching Grants Program
Wood from the Hood
Xcel Energy

Shawn Rounds and Lyda Morehouse
 Ron Morreim
 Steven J. Morrison
 Teresa Morrow
 Jocelyn Muggli
 Daniel and Catherine Mundt
 Janet Munger
 Richard Nelles
 Angie Nelson
 Clarence and Geraldine Nelson
 Harold and Marilyn Nelson
 Kenneth Nelson
 Lori and Lawrence Nelson
 Ruth Nelson
 Greg and Brenda Nethery
 Richard and Raymonde Noer
 Kelly O'Brien
 John and Rebecca Ofstehage
 Delvert and Lena Oftedahl
 Elvera Ogren
 Judy Ogren
 Abby Olson
 Phillip Olson
 Marilyn and Gary Overturf
 Robert Palkert

Bonnie Palmquist
 Dave and Kathy Palmquist
 Stefan and Corina Pambuccian
 Margaret Pansch
 Virginia Pansch
 Lois Parsons
 Bob and Susan Pederson
 Mark Peil
 Beryl Perry
 Allan and Corrine Petersen
 Dave and Andrea Peterson
 Joyce Peterson
 Gene Phelps
 Edmund Phillips
 Dick and Elaine Phillips
 Mrs. Howard Pierce
 George and Kathleen Pilkington
 Susan Piontek
 Kate Piper
 Arliss Piri
 Glen Pitlick
 Tim and Debbie Plude
 Gloria Preisler
 David Price
 John Probst

Bryce and Margaret Purdy
 Paul and Hollie Radomski
 Caroline Rea
 David Redish
 Frieda Rehwaldt
 Terri Reischl
 Warren Reynolds
 Ronald and Carole Richardson
 Gene and Mary Ann Rick
 Charles and Carol Ries
 Mary Robinson-Jamison
 Roberta Weisel and Britt Robson
 Walter and Jodell Rockenstein
 John and Connie Rollings
 Janet Rosenbloom
 Earl Rosenwinkel
 Brian Ross
 Rodney and Elaine Ross
 Jeff Rotschafer
 Walter and Amelia Rugland
 Lawrence Schug and Juliann Rule
 Lois Runge
 Orlando Ruchmeyer
 Marilyn Ruttan
 Mark Ryan



Jennifer Sahlin
 Julius Salinas
 Thomas and Mary Salkowski
 Lawrence Salzman
 Esther San Felippo
 Susan Sandberg
 Gerald Sanders
 Doug Sandstad
 Gloria Schahczenski
 Julie Schanzenbach Canham
 Maria Scheidegger
 Mary Scheinost
 James Schmid
 Alyce and Donald Schneider
 Bruce Schoenberg
 Lowell and Elizabeth Schow
 Lisa Schreifels
 Velinda Schrepel
 Fred and Janet Schroeder
 Michael Schwab
 Ralph Schwartz

MEMORIAL GIFTS

In memory of Robert Dengler
 Mrs. Robert H. Dengler
 In memory of Zeke Aden and Oskar
 Friedlieb
 Bill and Diane Rutherford
 In memory of Linda Glader
 Paul Glader
 Catherine Johnson
 In memory of George Gotwald
 Lucille Trulson,
 The Wales Family
 In memory of Blair Klein
 Kate Piper
 In memory of Robert T. Kolstad
 Steve & Linda Soderholm
 In memory of Morgan
 Anne and Brian Purrington
 In memory of Barb Ledbetter Nelson
 Thomas W. Anderson
 In memory of LaVanche O. Peterson
 Warren Reynolds
 In memory of Mr. & Mrs. Robert K.
 Pillsbury, Sr. Sandi Pillsbury Gredzens
 In memory of Mrs. Lola Schenk
 Dr. C. Perry Schenk
 In memory of Professor Skip Scriven
 Dorene Scriven, Adam Reed Sellheim
 Shawn Rounds and Lyda Morehouse

In memory of David J. Shanesy
 Jerry and Denise Benecke-Sylvestre
 Catherine A. Benner
 David or Marion Bickford
 Ronald and Cassandra Bornetun
 Joanne and John Boyer
 Norma Brantner
 Lindsey Carr
 William and Ruth Chalk
 John and Elizabeth Challas
 Larry and Rita Donlin
 Kimberly and Michael Fadell
 First Minnetonka City Bank
 Elizabeth Fleming
 Carol Fortier
 David and Shirley Froyd
 Eric and Nancy Greenfield
 Ervin and Annabelle Gross
 Eric Hageman
 Deborah J. Hedburg
 Jim's office friends at HCMC
 Barbara and Leslie Hexum
 Robert and Mary Alice Hullsiek
 Dorothy Jacobson and Ann HENZGEN
 Robert and Judith Hornick
 Peggy James
 Rodney H. Johnson, from Lan-De-Con, Inc.
 Lorna Johnston

Myron and Wanelda Jorissen
 Darlene and John Lacey
 Joseph and Gwendolyn Ladner
 Jane Lawrence
 Gregory and Pamela Lindberg
 Juliann Luse
 Mark and Susan Mason
 Nancy Mason
 Thomas and Dorothy Mason
 Lucy and Daniel McInerny
 Mary and Daniel McInerny
 Dorothy McMichael
 Sharon M. Meister
 Brian Mark Family Fund of The Minneapolis
 Foundation
 Lawrence and Lori Nelson
 Christine O'Bert
 Gary and Marilyn Overturf
 George and Kathleen Pilkington
 Gary L. Sigfrinius
 James Schmid
 Donald and Alyce Schneider
 Velinda Schrepel
 Raegan Sipe
 Roy and Mary Lou Swenson
 Tim and Julie Tapper
 Michael C. Vessels
 Donna Winters
 Elizabeth Young

In memory of Tine Thevenin
 Tine Thevenin Memorial Fund of
 The Saint Paul Foundation, as
 directed by Dag Knudsen

IN HONOR OF:

In honor of brothers and sisters
 Glenn and Margaret Bendickson
 In honor of Muriel Brainerd
 Sandra Gould
 In honor of Colleen Carey
 Mary Thompson
 In honor of Eric Chien
 Theodore Chien
 In honor of Barbara Farrell and MLT
 Volunteers
 Dick and Debby McNeil
 In honor of Susan Flygare
 Virginia Flygare
 In honor of Lucy Sontag
 Anonymous
 In honor of Dunn Yoshitani
 Matthew and Theresa Buley
 Ken and Izumi Yoshitani

John and Lois Schwob
 Thomas Scott
 David and Julie Sellergren
 Madeline Serr
 Jane Shallow
 Kent Shamblin
 Michael Shaw
 Robert Shepard
 Ross and Janet Shoger
 Gary Sigfrinius
 Cathleen Barczys Simons
 Dorothy Simons
 Diane Sineps
 Rolf Smeby
 Joan Smith
 Kate Golden and Mike Smith
 Terrence and Marge Smith
 Elizabeth Sohn
 Joan Solomon
 Donald Sotebeer
 Jerry Stamm
 Judith and Jerry Stanke
 Franklin Star
 Tom and Christine Stoa
 Loren and Anita Stockton

Marybeth and Evan Stoltz
 Tom Stoneburner
 David W. Strick
 Bill Sullivan
 William Sullivan
 Tim and Carolyn Sundquist
 Edward Swain and Mary Keirstead
 Richard and Bonnie Swanson
 Patricia and Roger Sween
 Paul Swensen and Karine Swensen Moe
 Roy and Mary Lou Swenson
 Andrea Szondy
 Julie and Tim Tapper
 Mary L. Testor
 Hannah Texler
 Mel Thelen
 Gery A. Then
 Donald and Virginia Thompson
 Steve and Jeanne Thompson
 Ronald Thorsrud
 Darrell Thorstenson
 Steve and Elaine Thrune
 Marcia Tippery
 Joe Tombers
 Candus Tripp

Dale Trombley
 Nancy Jo Tubbs
 Larry Turbes
 Gary and Nancy Van Cleve
 Jean Silberman and Tom van der Linden
 George and Josephine Vania
 Mary Ellen Vetter
 Bradford Vifquain
 Ken and Terry Visger
 Barbara von Haaren
 Marilyn Vosejka
 Marilyn Wahl
 Emmerson Ward
 Nicholas and Karyn Wasyliak
 Stuart Webb
 Clark and Eve Webster
 Michael Welch
 Mac Welles
 Karen Wellner
 Michele Vaillancourt and Brent Wennberg
 Dianne Wentz
 Russell and Doris Wenzel
 Buster West
 Mary and William Wever
 Molly Weyrens

Carolynne White
 Dennis Scherber and Winnie White-Scherber
 Janet Wilcox
 Warren Wildes and Mary Wildes Stevens
 Cheryl Wilke
 Stephen Wilkosz
 Judith and Guy Williams
 T. Alan and Cynthia Williams
 Dan and Ruth Willius
 Alex and Marguerite Wilson
 Kirsten Wilson
 Donna Winters
 John Skelton and Cynthia Wisniak Skelton
 Russell and Barbara Wright
 Ted Wunderlich
 Bryan Wyberg
 Keith and Mary Wyne
 David Young
 Elizabeth Young
 John Young
 John and Kathleen Zajicek
 Will Zalaznik
 David Zarkower
 Kenneth Zimmer
 Janet Petri and Paul Zorn
 Bruce Zumbahlen

JOHN PENNOYER

**ENCAMPMENT RIVER AREA
 CONSERVATION FUND**

Gifts to this fund support land protection activities in the Encampment River watershed along Lake Superior's North Shore.

An anonymous fund of The Minneapolis Foundation
 Catherine Andrus
 Elizabeth Andrus
 John E. Andrus III
 Julie D Andrus
 Jeff Arundel
 The Athwin Foundation
 Ben and Nancy Aurand, in honor of Cal & Lois Aurand
 Calvin Aurand
 Bruce and Mary Bean, in memory of David W. Pratt
 Andy L. Bond, in memory of Elizabeth Ann Bond & Suzanne T. Bangert
 Priscilla Brewster
 John and Barbara Budd
 Peter Budd, in honor of John Marshall Budd, Sr.
 Thomas and Karen Caswell III
 Thomas and Nancy Caswell
 Kent Chasson and Carrie McCarthy
 Stewart and Lesley Crosby
 Ann Cullen Smith
 Bill and Kate Cullen
 Leonard and Beth Dayton

Bradford and Donna Dyar, in honor of B.A. Rizer
 Sybil S. Eakin, in honor of Shotsy and Ward Johnson, and John Shepard and Suzanne Brust
 Stephen and Elizabeth B. Ellmann
 George and Nancy Gephart, in memory of George and Louise Ritchie Mairs
 Thomas and Julie Gillette Johns
 Al and Sally Hanser
 Charlotte Johnson, in honor of Nicholas Johnson
 Nick Johnson and Amy White
 David Knoblauch and Sue Woodrich
 Joan Krafft, in honor of the Krafft Family
 Christine M. Linsmayer, in memory of Robert M. Linsmayer
 Nicholas Linsmayer, in memory of Robert M. Linsmayer
 Angus Mairs and Amy Converse
 Dusty Mairs, in memory of George A. Mairs
 Elizabeth R. Mairs
 Heide Mairs
 Helen and Bob Mairs
 Susan Mairs
 Dean and Danielle Mathews, in honor of lovers of EFA and surroundings
 Michael and Kay McCarthy
 Elspeth and F. William McClelland
 George McClintock, in memory of Lou Larkin & Jessie Hauschild
 Rick Moore

Ford and Catherine Nicholson, in memory of Pondie and Ward Johnson
 Dan and Sallie O'Brien
 Cindy Pratt, in memory of David W. Pratt
 Dan Pratt, in memory of David W. Pratt
 Walter and Harriet Pratt
 Topsy Preus, in honor of Bob & Helen Mairs and family (Rob & Aimee, Elizabeth, Heide and Rich & Julia Weisbecker)
 Nancy Priedeman, in memory of Bill Priedeman
 Judith Proudfit, in memory of John and David Pratt
 Quaker Hill Foundation
 Daniel and Alicia Ritchie
 J. Timothy Ritchie, in honor of Daniel G. Ritchie
 Contee and Margaret Seely
 Albert Sheldon III, in memory of Albert M. Sheldon Jr.
 Neil and Lynne Snider, in memory of Edith Moak Jones and Barnard D. Jones
 Peg Duff Sud, in memory of Nick and Ann Duff
 John J. and Mary M. Taylor
 Tim and Diane Thorpe
 Tom and Holly Traub, in honor of Helen Kingman West
 Bradford W. Wallin
 Douglas Volkmer and Ann Bourne Williams
 Rufus and Elizabeth Winton



Nature is painting for us,
day after day, pictures
of infinite beauty.”

— John Ruskin
(1819-1900)

JOHN PENNOYER



MINNESOTA LAND TRUST